

PHA - X.XX - XX

TORQUE Nm
- 0.28
- 0.37
- 0.46
- 0.55
- 0.65

SHAFT END TYPE
- 01 - FLAG

NOTES:

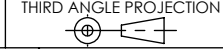
1. AVAILABLE TORQUES:

CATALOG NUMBER	PART NUMBER	DYNAMIC TORQUE		
		NOMINAL		TOLERANCE
		Nm	LB-IN	±%
PHA - 0.28 - 01	55-128	0.28	2.5	35
PHA - 0.37 - 01	55-137	0.37	3.3	30
PHA - 0.46 - 01	55-146	0.46	4.1	25
PHA - 0.55 - 01	55-155	0.55	4.9	25
PHA - 0.65 - 01	55-165	0.65	5.8	25

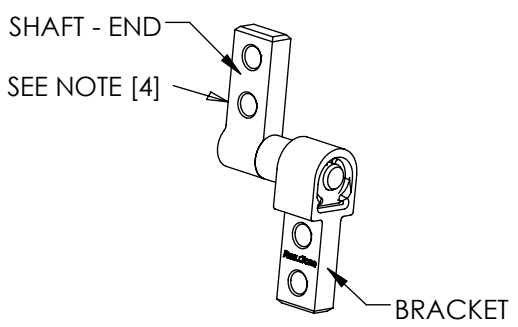
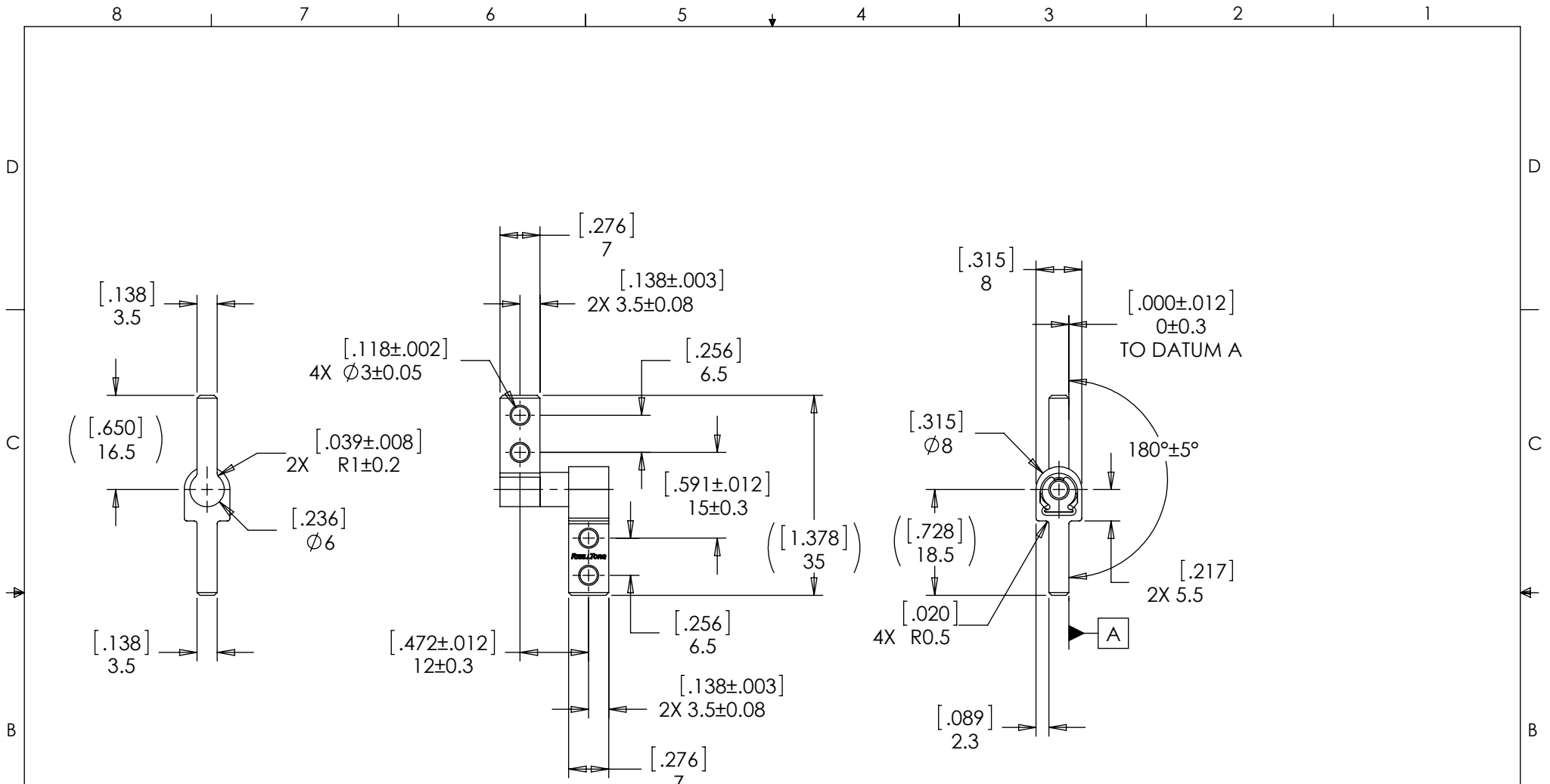
2. LIFE: 50,000 CYCLES AT 10% DUTY CYCLE FOR SPEEDS LESS THAN 100 RPM.
3. USER MUST DETERMINE FITNESS FOR USE IN APPLICATION.
- [4] HINGE DESIGNED TO SUPPORT A MINIMAL AXIAL FORCE IN DIRECTION SHOWN, NOT DESIGNED TO SUPPORT AXIAL FORCE IN THE OPPOSITE DIRECTION.
5. MATERIAL:
BRACKET AND SHAFT END ARE ZINC
SHAFT AND TORQUE ELEMENT ARE HARDENED STEEL
6. ENVIRONMENTAL CONDITIONS:
-20°C TO +80°C UP TO 10% OF LIFE CYCLES AT HOT AND COLD CONDITIONS.
7. DESIGNED TO ACCEPT M2.5 OR #3 SCREW OR EQUIVALENT.
8. HINGE RANGE OF MOTION: 360°.
9. TOLERANCE UNLESS SPECIFIED IS ±[.006] 0.15.

SPECIFICATION SUBJECT TO CHANGE

INTERPRET PRINT PER ASME Y14.5M-1994
THIS PRINT IS THE CONFIDENTIAL PROPERTY OF REELL PRECISION MFG.

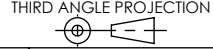


LEVEL	DESCRIPTION	DRAWN	DATE	APPROVED
DRAWN: HMA	DATE: 16FEB11	PART NO: 55-1XX		
CHECKED: RGW	DATE: 18FEB11	TITLE: POSITIONING HINGE ASSEMBLY		
APPROVED: RGW	DATE: 18FEB11	DESCRIPTION: PHA, 8mm HINGE		
REVISED: 29JUN15	DIMS: [IN] mm	REV: C		SCALE: 1:1
REELL PRECISION MANUFACTURING 1259 WILLOW LAKE BOULEVARD SAINT PAUL, MINNESOTA 55110-5103, USA		DO NOT SCALE DRAWING		SHEET 1 OF 2



SPECIFICATION SUBJECT TO CHANGE

INTERPRET PRINT PER ASME Y14.5M-1994
THIS PRINT IS THE CONFIDENTIAL PROPERTY OF REELL PRECISION MFG.



LEVEL	DESCRIPTION	DRAWN	DATE	APPROVED
DRAWN: HMA	DATE: 16FEB11	PART NO: 55-1XX		
CHECKED: RGW	DATE: 18FEB11	TITLE: POSITIONING HINGE ASSEMBLY		
APPROVED: RGW	DATE: 18FEB11	DESCRIPTION: PHA, 8mm HINGE		
REVISED: 29JUN15	DIMS: [IN] mm	REV: C		
REELL PRECISION MANUFACTURING 1259 WILLOW LAKE BOULEVARD SAINT PAUL, MINNESOTA 55110-5103, USA		SCALE: 1:1	DO NOT SCALE DRAWING	SHEET 2 OF 2