

# PHB - X.XX - XX - XX - XX

**TORQUE**  
Nm

- 0.44
- 0.78
- 1.22
- 1.57
- 2.01
- 2.35
- 2.79

**HINGE TYPE**

- 01 - LEFT
- 02 - RIGHT
- 03 - DUAL

**MOUNTING TYPE**

- 01 - THROUGH
- 02 - COUNTERSINK

**FINISH**

- 01 - PLAIN
- 02 - BLACK

DYNAMIC TORQUE	
NOMINAL (Nm)	TOLERANCE
0.44	±30%
0.78	±25%
1.22	±25%
1.57	±20%
2.01	±20%
2.35	±20%
2.79	±20%

PRODUCT TORQUE SPECIFICATION AT +20 °C.

**NOTES:**

1. USER MUST DETERMINE FITNESS FOR USE IN APPLICATION.
2. LIFE: 50,000 CYCLES WHEN DUTY CYCLE IS LESS THAN 10% AND ROTATIONAL SPEED IS LESS THAN 100 RPM. 30 SECONDS MAXIMUM CONTINUOUS ACTUATION.
3. DESIGNED TO ACCEPT M4 (BRACKET) AND M3 (SHAFT END) SCREWS.
4. SHAFT END FLATS ON DUAL OPTION TO BE ORIENTED ±5° WITH RESPECT TO EACH OTHER.
5. MATERIAL:  
 ZINC BRACKET  
 LOW CARBON STEEL WITH ZINC PLATE  
 SHAFT END  
 HARDENED STEEL SHAFT  
 HARDENED STEEL TORQUE ELEMENT

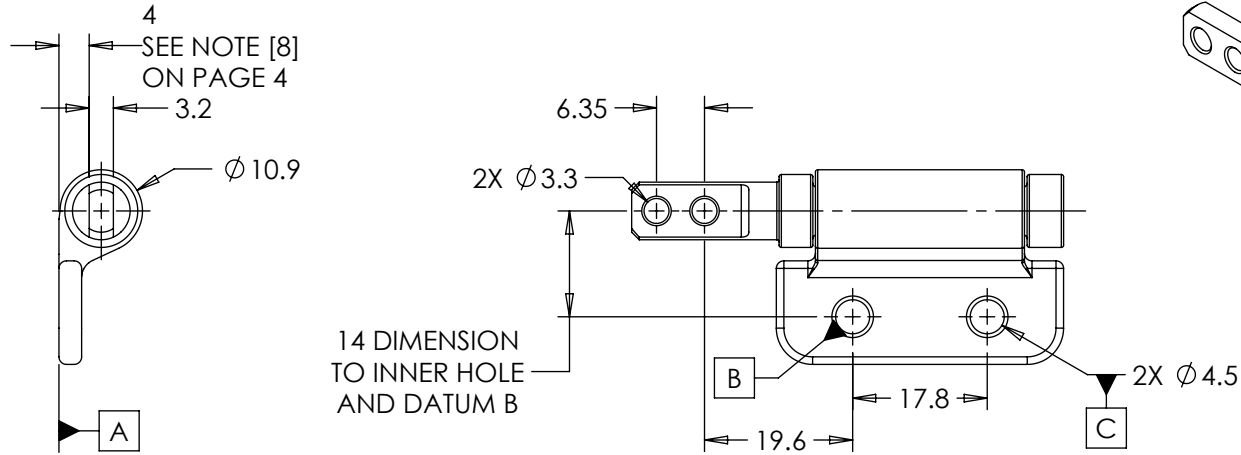
INTERPRET PRINT PER  
ASME Y14.5M-1994  
THIS PRINT IS THE  
CONFIDENTIAL PROPERTY  
OF REELL PRECISION MFG.

THIRD ANGLE PROJECTION



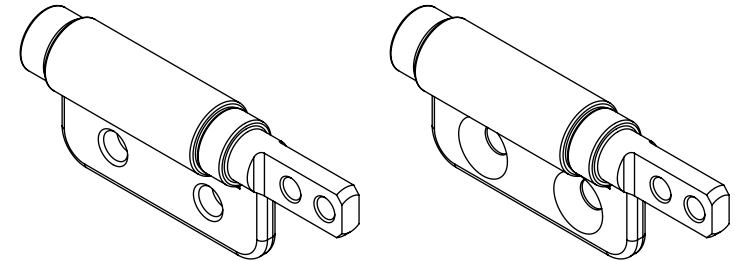
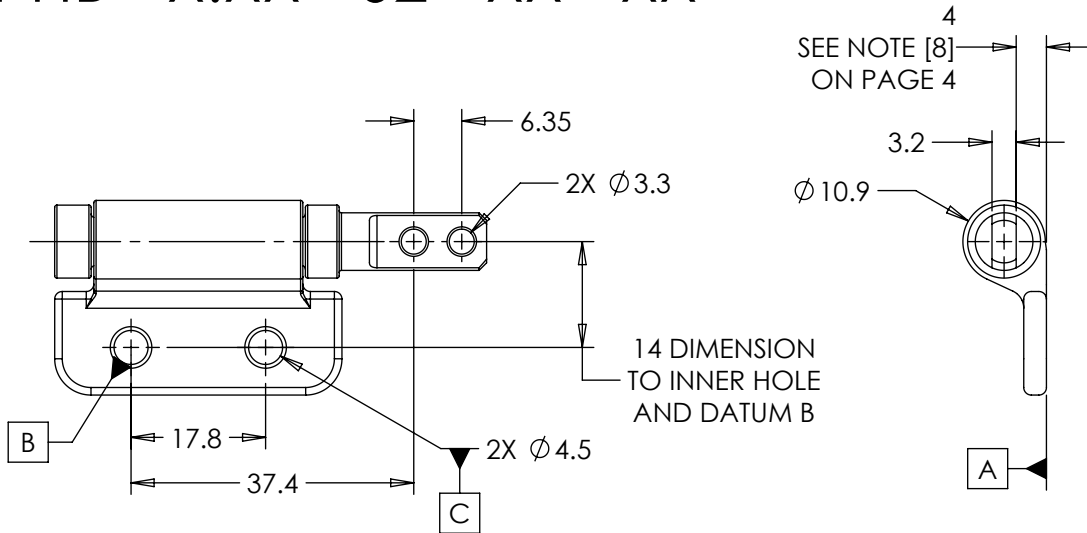
LEVEL	ECO - DESCRIPTION		DRAWN	DATE	APPROVED
DRAWN:	LIM	DATE: 7-3-01	REFERENCE: 26-XXX, 27-XXX, 29-XXX 33-XXX, 34-XXX, 36-XXX		
CHECKED:	TWJ	DATE: 8-30-01	TITLE: SALES DRAWING PHB HINGE ASSEMBLY		
APPROVED:	TWJ	DATE: 8-30-01	PART NO: PHB-SERIES		
REVISED:	6-3-19	DIMS: mm	REV: M		
REELL PRECISION MANUFACTURING 1259 WILLOW LAKE BOULEVARD SAINT PAUL, MINNESOTA 55110-5103, USA			SCALE: 1:1	DO NOT SCALE DRAWING	SHEET 1 OF 4

# PHB - X.XX - 01 - XX - XX



*DIMENSIONS APPLY TO COUNTERSINK AND STANDARD HOLE OPTIONS*

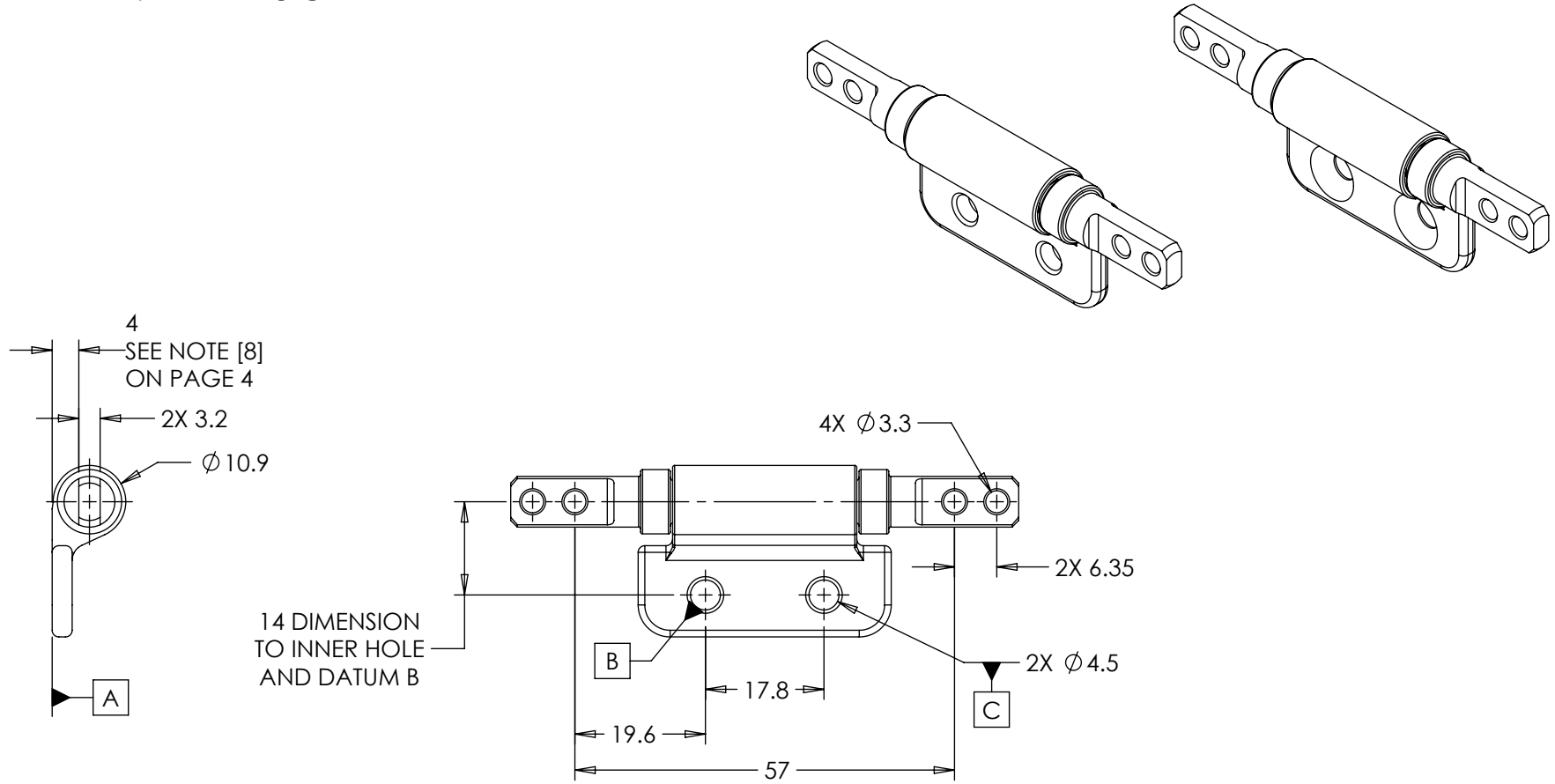
# PHB - X.XX - 02 - XX - XX



LEVEL	ECO - DESCRIPTION		DRAWN	DATE	APPROVED
DRAWN:	LIM	DATE: 7-3-01	REFERENCE: 26-XXX, 27-XXX, 29-XXX 33-XXX, 34-XXX, 36-XXX		
CHECKED:	TWJ	DATE: 8-30-01	TITLE: SALES DRAWING PHB HINGE ASSEMBLY		
APPROVED:	TWJ	DATE: 8-30-01	PART NO: PHB-SERIES		
REVISED:	6-3-19	DIMS: mm	REV: M		
INTERPRET PRINT PER ASME Y14.5M-1994 THIS PRINT IS THE CONFIDENTIAL PROPERTY OF REELL PRECISION MFG. THIRD ANGLE PROJECTION				REELL PRECISION MANUFACTURING 1259 WILLOW LAKE BOULEVARD SAINT PAUL, MINNESOTA 55110-5103, USA	
SCALE: 1:1		DO NOT SCALE DRAWING		SHEET 2 OF 4	

SPECIFICATION SUBJECT TO CHANGE

# PHB - X.XX - 03 - XX - XX

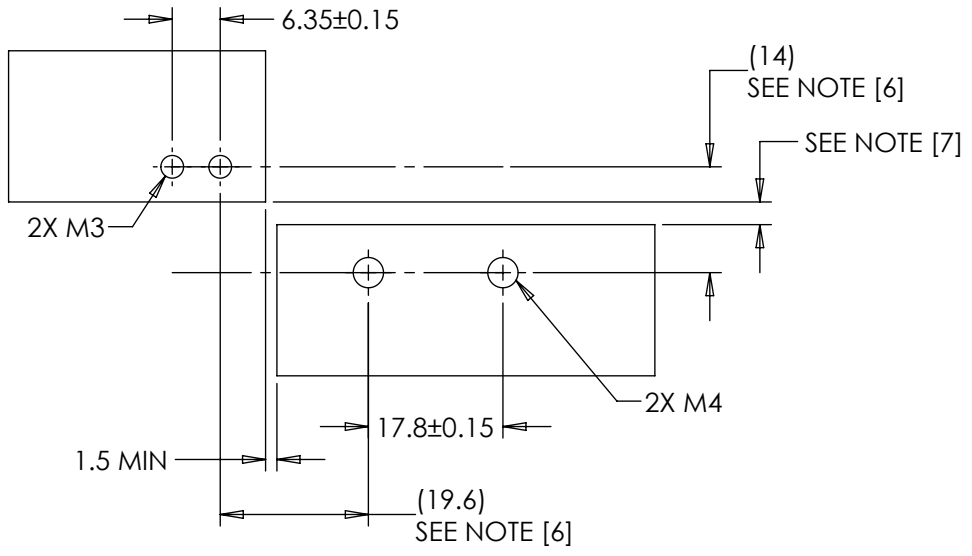


*DIMENSIONS APPLY TO COUNTERSINK AND STANDARD HOLE OPTIONS*

LEVEL	ECO - DESCRIPTION		DRAWN	DATE	APPROVED
DRAWN:	LIM	DATE: 7-3-01	REFERENCE: 26-XXX, 27-XXX, 29-XXX 33-XXX, 34-XXX, 36-XXX		
CHECKED:	TWJ	DATE: 8-30-01	TITLE: SALES DRAWING PHB HINGE ASSEMBLY		
APPROVED:	TWJ	DATE: 8-30-01	PART NO: PHB-SERIES		
REVISED:	6-3-19	DIMS: mm	REV: M		
INTERPRET PRINT PER ASME Y14.5M-1994 THIS PRINT IS THE CONFIDENTIAL PROPERTY OF REELL PRECISION MFG. THIRD ANGLE PROJECTION				REELL PRECISION MANUFACTURING 1259 WILLOW LAKE BOULEVARD SAINT PAUL, MINNESOTA 55110-5103, USA	
SCALE: 1:1		DO NOT SCALE DRAWING		SHEET 3 OF 4	

SPECIFICATION SUBJECT TO CHANGE

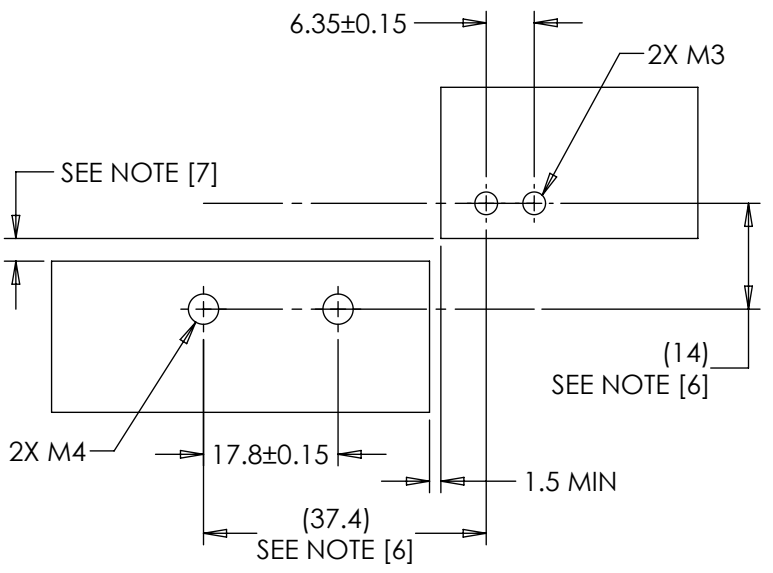
MOUNTING CONFIGURATION FOR ALL LEFT CONFIGURATIONS



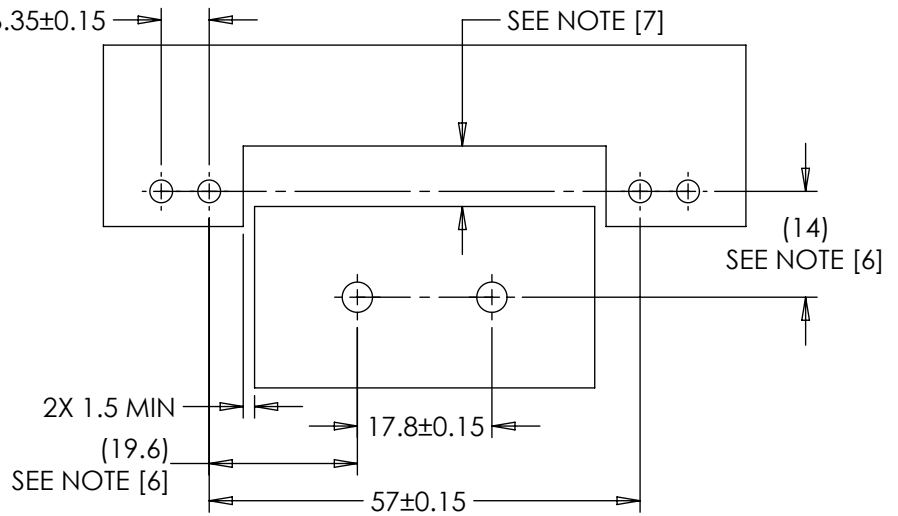
MOUNTING CONFIGURATION NOTES:

- [6] USER WITH CRITICAL MOUNTING INTERFACES (I.E. LATCHES) SHOULD ALIGN PLATES TO  $\pm 0.1$ .
- [7] USER TO DETERMINE MINIMUM DISTANCE BASED ON MOUNTING PLATE THICKNESSES AND DESIRED ANGLE OF ROTATION.
- [8] USER MOUNTING CONFIGURATION TO ALLOW  $\pm 0.5$  TOLERANCE IN THE DEPTH DIRECTION FROM SHAFT END TO BRACKET IF APPLICABLE.
- 9. MATING ASSEMBLIES SHOULD BE DESIGNED TO ALLOW 0.8 NOMINAL CLEARANCE AROUND ENTIRE ASSEMBLY.

MOUNTING CONFIGURATION FOR ALL RIGHT CONFIGURATIONS



MOUNTING CONFIGURATION FOR ALL DUAL CONFIGURATIONS



LEVEL	ECO - DESCRIPTION		DRAWN	DATE	APPROVED
DRAWN:	LIM	DATE: 7-3-01	REFERENCE: 26-XXX, 27-XXX, 29-XXX 33-XXX, 34-XXX, 36-XXX		
CHECKED:	TWJ	DATE: 8-30-01	TITLE: SALES DRAWING PHB HINGE ASSEMBLY		
APPROVED:	TWJ	DATE: 8-30-01	PART NO: PHB-SERIES		
REVISED:	6-3-19	DIMS: mm	REV: M		
REELL PRECISION MANUFACTURING 1259 WILLOW LAKE BOULEVARD SAINT PAUL, MINNESOTA 55110-5103, USA		SCALE: 1:1 DO NOT SCALE DRAWING SHEET 4 OF 4			

INTERPRET PRINT PER ASME Y14.5M-1994  
THIS PRINT IS THE CONFIDENTIAL PROPERTY OF REELL PRECISION MFG.  
THIRD ANGLE PROJECTION

SPECIFICATION SUBJECT TO CHANGE