

TI - 360 - X.XX - XX

TORQUE Nm
6.00
8.00
10.0

SHAFT-END TYPE
03 - ONE WAY FORWARD
04 - ONE WAY REVERSE

- NOTES:
- APPLICATION CONDITIONS REFERENCE (USER MUST DETERMINE FITNESS FOR USE IN APPLICATION).
  - ENVIRONMENTAL CONDITIONS: -20°C to 80°C.
  - PRODUCT TORQUE SPECIFICATION: DYNAMIC TORQUE ±20% OF NOMINAL
  - LIFE: 25,000 CYCLES. ONE CYCLE CONSISTS OF 120° CW AND 120° CCW AT 10% DUTY CYCLE FOR SPEEDS LESS THAN 100 RPM.
  - MATERIALS:  
PLATED POWDERED METAL HOUSINGS  
HARDENED STEEL TORQUE ELEMENT  
DIECAST KNURLED ZINC SHAFT END  
HARDENED STEEL BEARINGS  
STEEL WASHERS  
STEEL RETAINING RINGS  
MINERAL OIL BASED LUBRICANT
  - FINISH:  
NON-COSMETIC.
  - TORQUE INSERT DESIGNED FOR USE IN PLASTIC OR METAL. SEE INDIVIDUAL CONFIGURATION DRAWINGS FOR ADDITIONAL DETAIL.
  - [8] TORQUE INSERT DESIGNED TO SUPPORT A MINIMAL AXIAL FORCE IN DIRECTION SHOWN, NOT DESIGNED TO SUPPORT AXIAL FORCE IN THE OPPOSITE DIRECTION.
  - CUSTOMER IS RESPONSIBLE FOR CHECKING COMPATIBILITY OF REELL LUBRICANTS WITH PLASTICS USED.
  - OVERALL LENGTH MAY CHANGE DURING SHIPPING.
  - NUMBER OF TORQUE ELEMENTS MAY VARY.

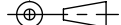
*ALL TORQUE INSERT DIMENSIONS ARE REFERENCE  
SEE CAD MODEL FOR UNSPECIFIED FEATURES.*


FOR PATENTS SEE:  
[pat.reell.com](http://pat.reell.com) (PRODUCT CODE: CP10)

SPECIFICATION SUBJECT TO CHANGE

UNLESS SPECIFIED  
TOLERANCE ±0.15  
INTERPRET PRINT PER  
ASME Y14.5M-1994  
THIS PRINT IS THE  
CONFIDENTIAL PROPERTY  
OF REELL PRECISION MFG.

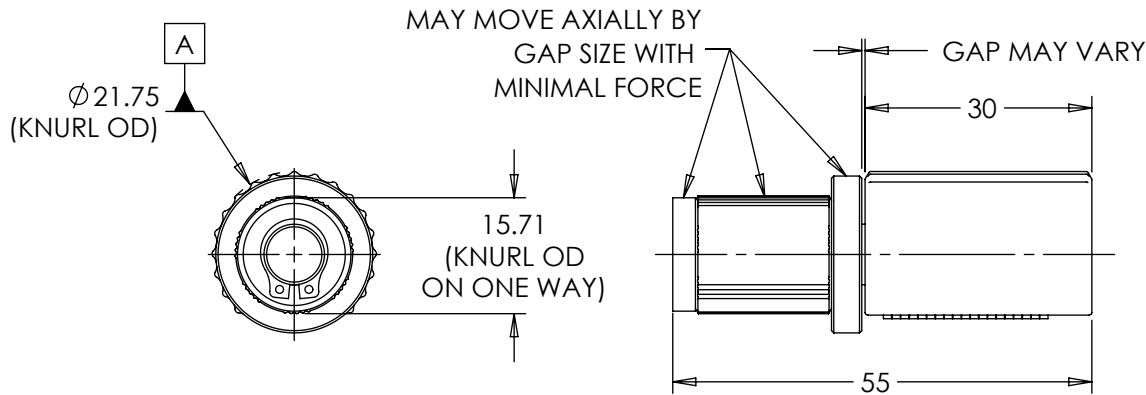
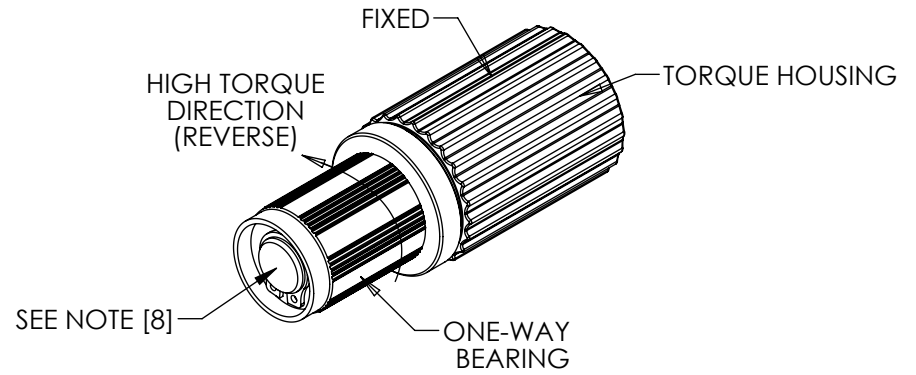
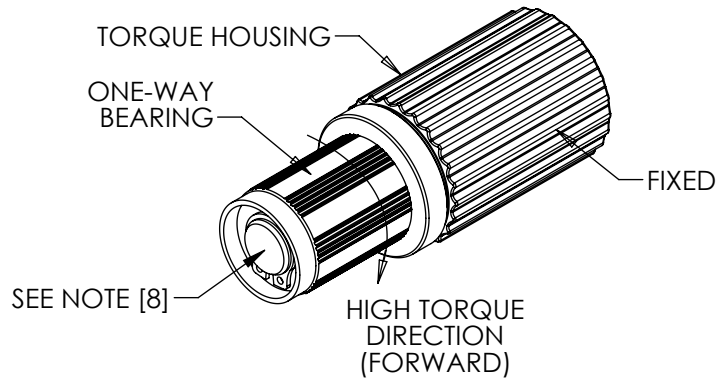
THIRD ANGLE PROJECTION



LEVEL	DESCRIPTION		DRAWN	DATE	APPROVED
DRAWN:	HMA	DATE: 16APR12	REFERENCE: 83560-XXX		
CHECKED:	MPG	DATE: 26APR17	TITLE: TORQUE INSERT SALES DRAWING		
APPROVED:	MPG	DATE: 26APR17	PART NO: TI-360		
REVISED:	30JUL19	DIMS: mm	REV: A		
		REELL PRECISION MANUFACTURING 1259 WILLOW LAKE BOULEVARD SAINT PAUL, MINNESOTA 55110-5103, USA		SCALE: 1:1	DO NOT SCALE DRAWING
					SHEET 1 OF 3

# TI-360-X.XX-03 (ONE WAY FORWARD)

# TI-360-X.XX-04 (ONE WAY REVERSE)



- INTENDED FOR PRESS FIT INTO METALS. CONTACT REELL FOR OTHER MOUNTING OPTIONS.  
- APPROXIMATE WEIGHT: 91.7 GRAMS

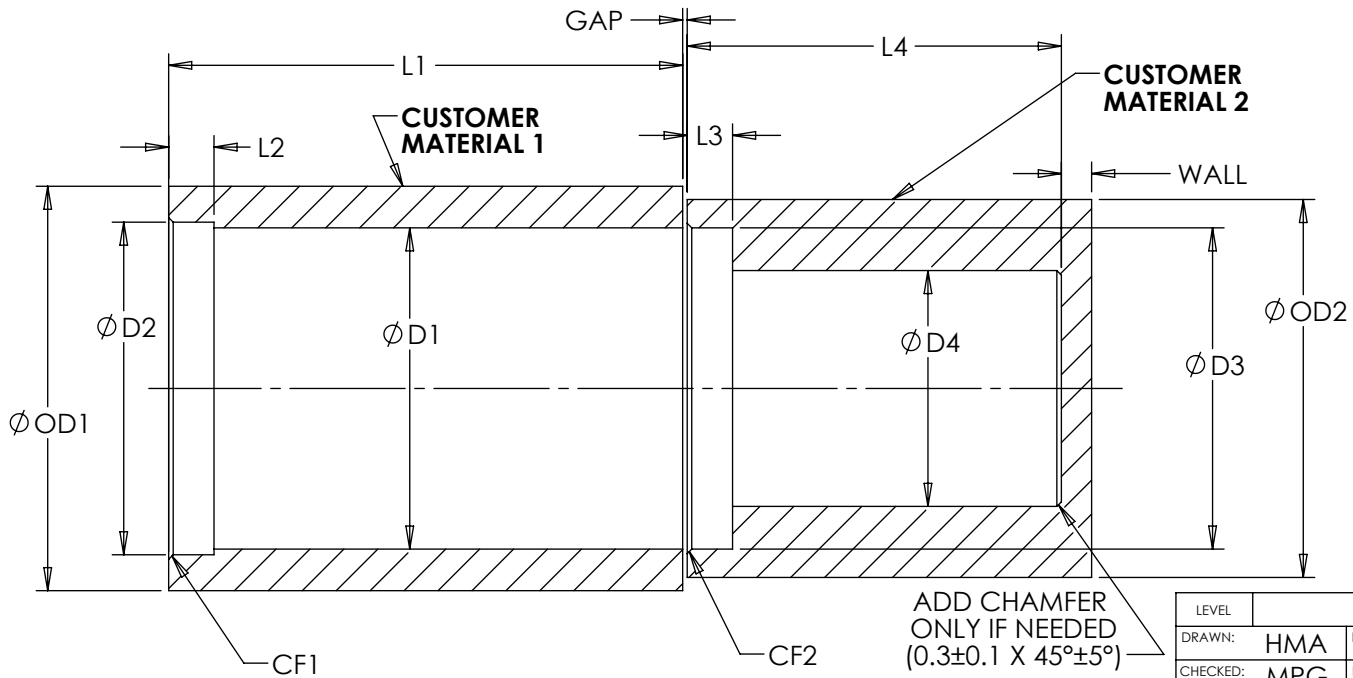
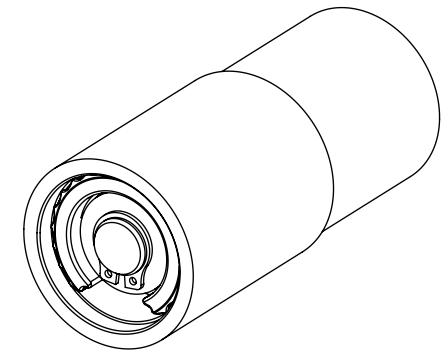
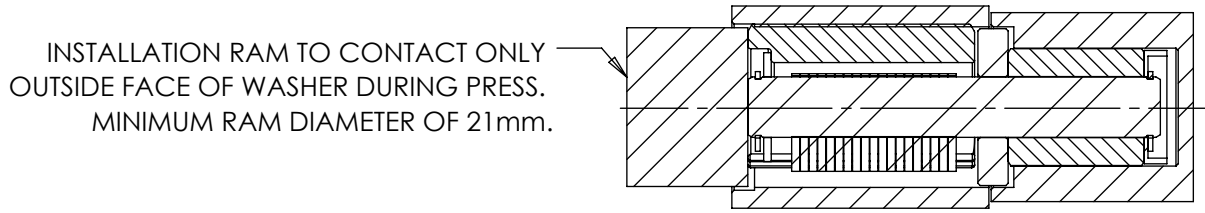
SPECIFICATION SUBJECT TO CHANGE

UNLESS SPECIFIED TOLERANCE ±0.15  
INTERPRET PRINT PER ASME Y14.5M-1994  
THIS PRINT IS THE CONFIDENTIAL PROPERTY OF REELL PRECISION MFG.  
THIRD ANGLE PROJECTION

LEVEL	DESCRIPTION	DRAWN	DATE	APPROVED
DRAWN:	HMA	DATE:	16APR12	REFERENCE:
CHECKED:	MPG	DATE:	26APR17	83560-XXX
APPROVED:	MPG	DATE:	26APR17	TITLE:
REVISED:	30JUL19	DIMS:	mm	TORQUE INSERT SALES DRAWING
				PART NO:
REELL PRECISION MANUFACTURING 1259 WILLOW LAKE BOULEVARD SAINT PAUL, MINNESOTA 55110-5103, USA				TI-360 REV: A
SCALE: 1:1		DO NOT SCALE DRAWING		SHEET 2 OF 3

# TI-360-X.XX-03 AND TI-360-X.XX-04 CUSTOMER INSTALLATION GEOMETRY

MATERIAL	D1	D2	D3	D4	L1	L2	L3	L4	CF1	CF2	OD1	OD2	WALL	GAP
DIE CAST ZINC	21.5±0.05	22±0.03	21.25±0.03	15.53±0.03	32.4 MIN	3±0.1	2.5±0.1	24.5 MIN	0.3±0.1 X 45°±5°	0.3±0.1 X 45°±5°	26.75 MIN	25 MIN	2 MIN	(0.3)
DIE CAST ALUMINUM														
MILD STEEL	21.63±0.025			15.57±0.015										
WROUGHT ALUMINUM														



CUSTOMER MATERIAL 1 AND CUSTOMER MATERIAL 2 ALIGNMENT TO BE WITHIN 0.15mm IN ANY DIRECTION.

ADD CHAMFER ONLY IF NEEDED (0.3±0.1 X 45°±5°)

SCALE 2:1

LEVEL	DESCRIPTION		DRAWN	DATE	APPROVED
DRAWN:	HMA	DATE: 16APR12	REFERENCE: 83560-XXX		
CHECKED:	MPG	DATE: 26APR17	TITLE: TORQUE INSERT SALES DRAWING		
APPROVED:	MPG	DATE: 26APR17	PART NO: TI-360		
REVISED:	30JUL19	DIMS: mm	REV: A		
		REELL PRECISION MANUFACTURING 1259 WILLOW LAKE BOULEVARD SAINT PAUL, MINNESOTA 55110-5103, USA			
SCALE: 1:1		DO NOT SCALE DRAWING		SHEET 3 OF 3	

SPECIFICATION SUBJECT TO CHANGE

INTERPRET PRINT PER ASME Y14.5M-1994  
 THIS PRINT IS THE CONFIDENTIAL PROPERTY OF REELL PRECISION MFG.  
 THIRD ANGLE PROJECTION