

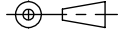

NOTES:

1. LIFE: 20,000 CYCLES WHEN DUTY CYCLE IS LESS THAN 10% AND ROTATIONAL SPEED IS LESS THAN 100 RPM. 10 SECONDS MAXIMUM CONTINUOUS ACTUATION.
2. SHAFT END MAY ROTATE IN BULK SHIPPING.
3. USER MUST DETERMINE FITNESS FOR USE IN APPLICATION.
4. DESIGNED TO ACCEPT M4 OR #8 SCREW OR EQUIVALENT.
5. DIMENSIONS USED ON BOTH RIGHT AND LEFT.
- [6] HINGE MARK WITH TORQUE (Nm) AND DDMMYY.  
EXAMPLE (2.0 220914)
7. MATERIAL :  
BRACKET AND SHAFT END: ZINC DIECAST  
SHAFT: HARDENED STEEL  
TORQUE ELEMENT: HARDENED STEEL  
BEARINGS: POWDERED METAL

PHT - X.X - X

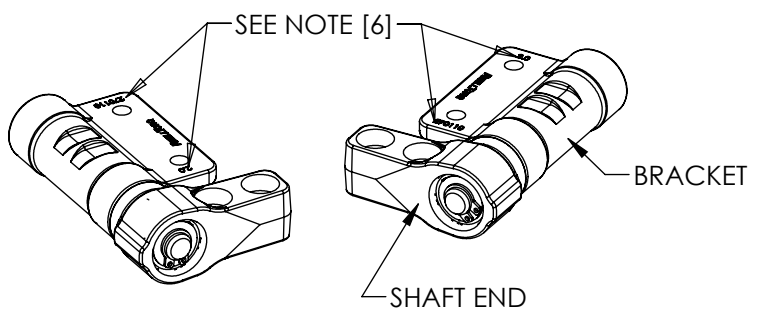
TORQUE Nm  
- 2.0  
- 4.0  
- 6.0

SHAFT END  
L - LEFT  
R - RIGHT

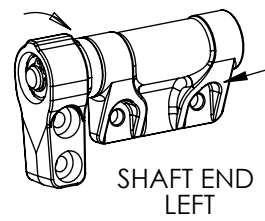
LEVEL	DESCRIPTION		DRAWN	DATE	APPROVED
DRAWN:	HMA	DATE: 17SEP14	PART NO: 83236-XXX		
CHECKED:	ESA	DATE: 22SEP14	TITLE: ONE WAY HINGE		
APPROVED:	ESA	DATE: 22SEP14	DESCRIPTION: PHT		
REVISED:	24JUN16	DIMS: [IN]mm	SCALE: 1:1		DO NOT SCALE DRAWING
INTERPRET PRINT PER ASME Y14.5M-1994 THIS PRINT IS THE CONFIDENTIAL PROPERTY OF REELL PRECISION MFG. THIRD ANGLE PROJECTION				REELL PRECISION MANUFACTURING 1259 WILLOW LAKE BOULEVARD SAINT PAUL, MINNESOTA 55110-5103, USA	
			REV: K		SHEET 1 OF 3

8 7 6 5 4 3 2 1

D

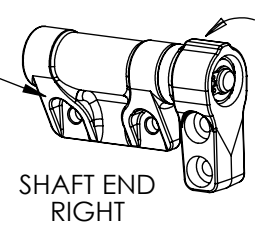


DIRECTION OF HIGH TORQUE



FIXED

DIRECTION OF HIGH TORQUE



D

C

CATALOG NUMBER	SIDE	HIGH TORQUE			LOW TORQUE 10% MAX	
		NOMINAL		TOLERANCE	MAX	
		Nm	LB-IN	+/- %	Nm	LB-IN
PHT-2.0-L	LEFT	2.00	17.7	20	0.50	4.4
PHT-2.0-R	RIGHT	2.00	17.7	20	0.50	4.4
PHT-4.0-L	LEFT	4.00	35.4	20	0.50	4.4
PHT-4.0-R	RIGHT	4.00	35.4	20	0.50	4.4
PHT-6.0-L	LEFT	6.00	53.1	20	0.50	4.4
PHT-6.0-R	RIGHT	6.00	53.1	20	0.50	4.4

C

B

B

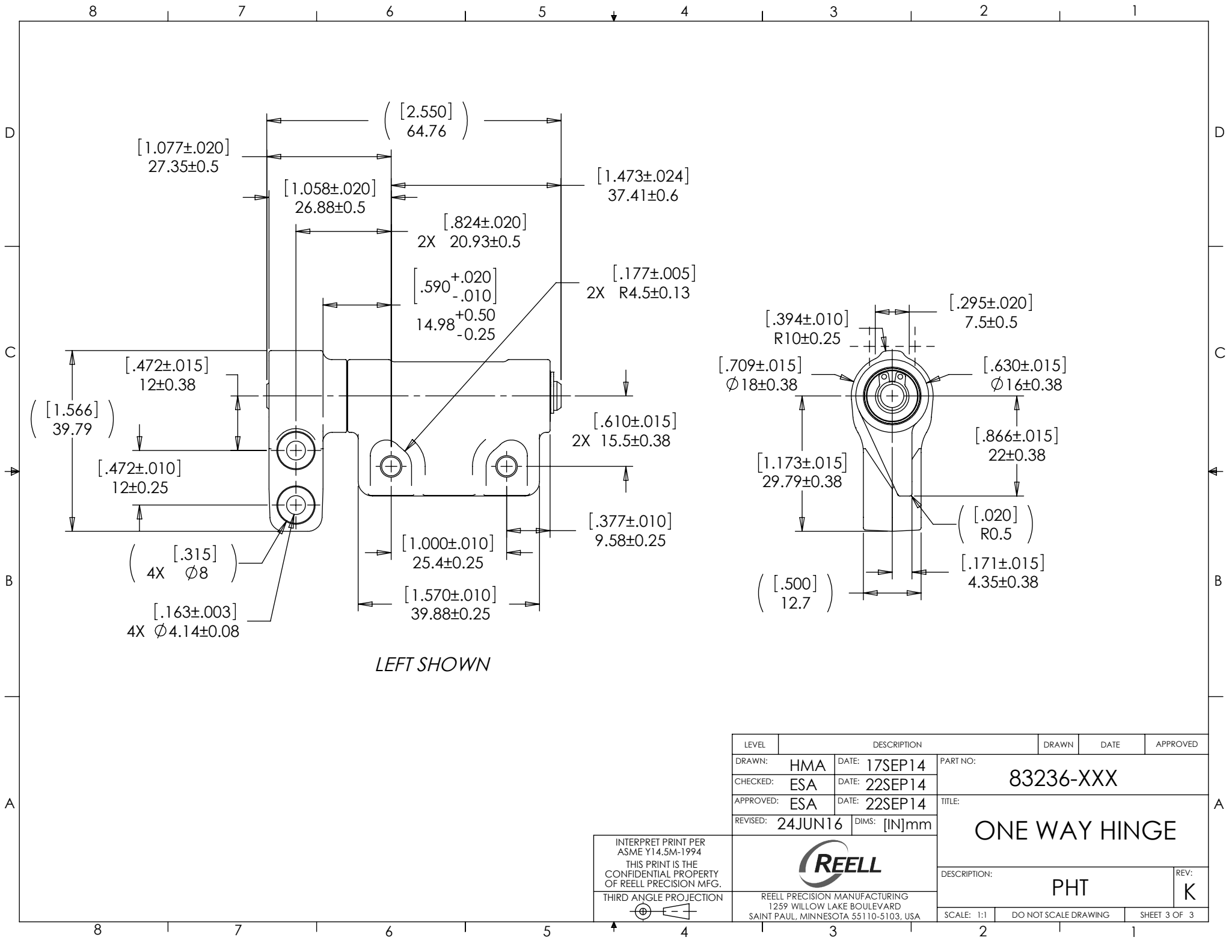
A

A

8 7 6 5 4 3 2 1

LEVEL	DESCRIPTION		DRAWN	DATE	APPROVED
DRAWN:	HMA	DATE: 17SEP14	PART NO: 83236-XXX		
CHECKED:	ESA	DATE: 22SEP14	TITLE: ONE WAY HINGE		
APPROVED:	ESA	DATE: 22SEP14	DESCRIPTION: PHT		
REVISED:	24JUN16	DIMS: [IN]mm	SCALE: 1:1		DO NOT SCALE DRAWING
INTERPRET PRINT PER ASME Y14.5M-1994 THIS PRINT IS THE CONFIDENTIAL PROPERTY OF REELL PRECISION MFG. THIRD ANGLE PROJECTION				REV: K	
REELL PRECISION MANUFACTURING 1259 WILLOW LAKE BOULEVARD SAINT PAUL, MINNESOTA 55110-5103, USA		SHEET 2 OF 3			

INTERPRET PRINT PER ASME Y14.5M-1994  
 THIS PRINT IS THE CONFIDENTIAL PROPERTY OF REELL PRECISION MFG.  
 THIRD ANGLE PROJECTION



LEVEL	DESCRIPTION		DRAWN	DATE	APPROVED
DRAWN:	HMA	DATE: 17SEP14	PART NO: 83236-XXX		
CHECKED:	ESA	DATE: 22SEP14	TITLE: ONE WAY HINGE		
APPROVED:	ESA	DATE: 22SEP14	DESCRIPTION: PHT		
REVISED:	24JUN16	DIMS: [IN]mm	REV: K		
INTERPRET PRINT PER ASME Y14.5M-1994 THIS PRINT IS THE CONFIDENTIAL PROPERTY OF REELL PRECISION MFG. THIRD ANGLE PROJECTION				REELL PRECISION MANUFACTURING 1259 WILLOW LAKE BOULEVARD SAINT PAUL, MINNESOTA 55110-5103, USA	
SCALE: 1:1		DO NOT SCALE DRAWING		SHEET 3 OF 3	