

8 7 6 5 4 3 2 1

NOTES:


1. USER MUST DETERMINE FITNESS FOR USE IN APPLICATION.
2. LIFE: 30,000 CYCLES ONE CYCLE CONSISTS OF 135° CW AND 135° CCW.
3. DIMENSIONS APPLY WITH THE ASSEMBLY RESTRAINED IN THE ABC REFERENCE FRAME.
4. HINGE NOT DESIGNED TO SUPPORT AXIAL FORCE IN EITHER DIRECTION.
5. MATERIALS:
DIECAST ZINC HOUSINGS
POWDERED METAL SHAFT END
HARDENED STEEL TORQUE ELEMENT
MINERAL OIL BASED LUBRICANT
6. FINISH:
NON-COSMETIC PLAIN.
7. CUSTOMER IS RESPONSIBLE FOR CHECKING COMPATIBILITY OF REELL LUBRICANTS WITH PLASTICS USED.

NAME: TI - C5M - X.XX - XX


TORQUE Nm
- 0.15
- 0.25
- 0.30

SHAFT-END TYPE
-01 - KNURLED SHAFT
-02 - SINGLE FIN

TORQUE INSERT	DYNAMIC TORQUE	
	NOMINAL	TOLERANCE
	Nm	±
TI-C5M-0.15-01	0.15	30%
TI-C5M-0.25-01	0.25	30%
TI-C5M-0.30-01	0.30	25%
TI-C5M-0.15-02	0.15	30%
TI-C5M-0.25-02	0.25	30%
TI-C5M-0.30-02	0.30	25%

LEVEL	DESCRIPTION		DRAWN	DATE	APPROVED
DRAWN: HMA	DATE: 13DEC13	PART NO: 84002-XXX			
CHECKED: STK	DATE: 24APR14	TITLE: TORQUE INSERT			
APPROVED: STK	DATE: 24APR14				
REVISED: 05OCT18	DIMS: mm	DESCRIPTION: TI-C5M		REV: L	
			SCALE: 2:1	DO NOT SCALE DRAWING	SHEET 1 OF 4

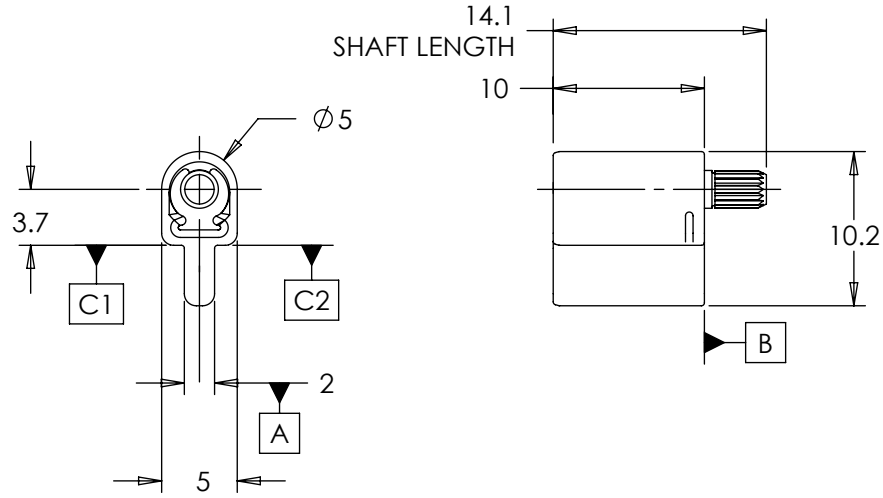
INTERPRET PRINT PER ASME Y14.5M-1994
THIS PRINT IS THE CONFIDENTIAL PROPERTY OF REELL PRECISION MFG.
THIRD ANGLE PROJECTION



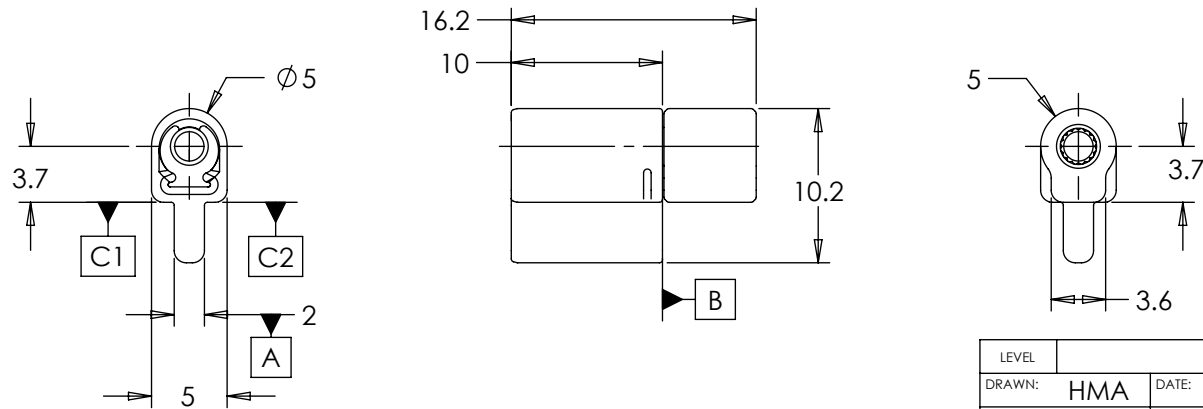
SPECIFICATION SUBJECT TO CHANGE

8 7 6 5 4 3 2 1

TI-C5M-X.XX-01



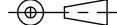
TI-C5M-X.XX-02



SPECIFICATION SUBJECT TO CHANGE

INTERPRET PRINT PER
ASME Y14.5M-1994
THIS PRINT IS THE
CONFIDENTIAL PROPERTY
OF REELL PRECISION MFG.

THIRD ANGLE PROJECTION

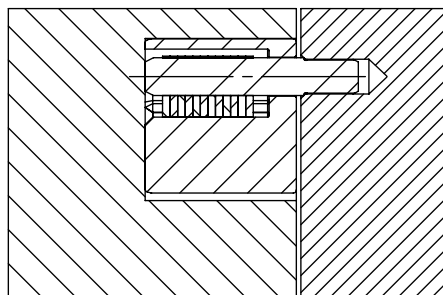


LEVEL	DESCRIPTION		DRAWN	DATE	APPROVED
DRAWN:	HMA	DATE: 13DEC13	PART NO: 84002-XXX		
CHECKED:	STK	DATE: 24APR14	TITLE: TORQUE INSERT		
APPROVED:	STK	DATE: 24APR14	DESCRIPTION: TI-C5M		
REVISED:	05OCT18	DIMS: mm	SCALE: 2:1		REV: L
		REELL PRECISION MANUFACTURING 1259 WILLOW LAKE BOULEVARD SAINT PAUL, MINNESOTA 55110-5103, USA		DO NOT SCALE DRAWING	
			SHEET 2 OF 4		

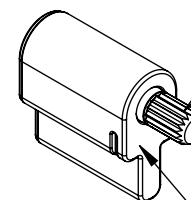
TI-C5M-X.XX-01 CUSTOMER INSTALLATION GEOMETRY

CUSTOMER MATERIAL	D1	D2	L1	L2	L3	L4	L5	L6	CF1	WALL	GAP
DIE CAST ZINC	2.3±0.03	5.05±0.05	3.7±0.05	4.5±0.1	1.9±0.03	5.05 ^{+0.15} -0.05	10±0.05	4.5 MIN	0.3±0.1 X 45°±5°	1.25 MIN	0.1 MIN
MILD STEEL	2.4±0.015										
DIE CAST ALUMINUM	2.3±0.03										
WROUGHT ALUMINUM	2.4±0.015										

- HINGE HOUSING MAY BE PRESS FIT INTO NON-METALLIC MATERIALS. DELRIN DIMENSIONS SPECIFIED FOR HINGE HOUSING ON PAGE 4.
CONTACT REELL FOR OTHER MOUNTING OPTIONS.



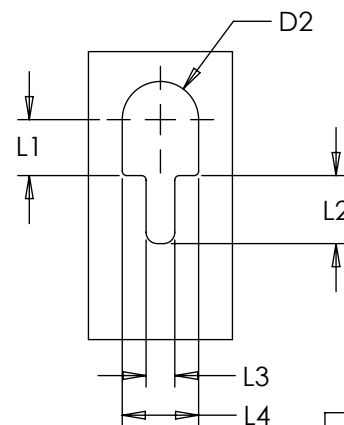
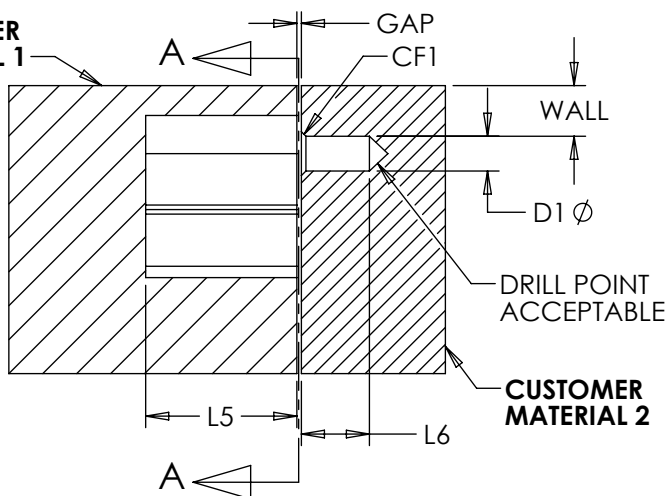
HINGE PRESS



PRESS TOOLING SHOULD BE CLEARANCED TO AVOID CONTACT WITH SHAFT

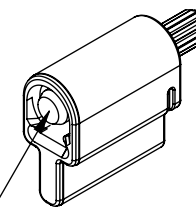
TO INSERT HINGE, PRESS ON SURFACE INDICATED

CUSTOMER MATERIAL 1



SECTION A-A

KNURLED SHAFT PRESS



FRONT OF SHAFT MUST BE SUPPORTED DURING INSTALLATION

CUSTOMER MATERIAL 1 AND CUSTOMER MATERIAL 2 ALIGNMENT TO BE WITHIN 0.10mm IN ANY DIRECTION TO ENSURE PRODUCT PERFORMANCE.

SPECIFICATION SUBJECT TO CHANGE

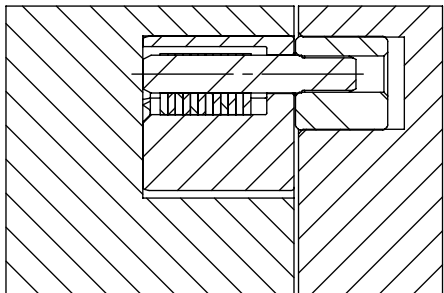
LEVEL	DESCRIPTION		DRAWN	DATE	APPROVED
DRAWN:	HMA	DATE: 13DEC13	PART NO: 84002-XXX		
CHECKED:	STK	DATE: 24APR14	TITLE: TORQUE INSERT		
APPROVED:	STK	DATE: 24APR14	DESCRIPTION: TI-C5M		
REVISED:	05OCT18	DIMS: mm	REV: L		SCALE: 2:1
		REELL PRECISION MANUFACTURING 1259 WILLOW LAKE BOULEVARD SAINT PAUL, MINNESOTA 55110-5103, USA		DO NOT SCALE DRAWING	
			SHEET 3 OF 4		

INTERPRET PRINT PER ASME Y14.5M-1994
THIS PRINT IS THE CONFIDENTIAL PROPERTY OF REELL PRECISION MFG.
THIRD ANGLE PROJECTION

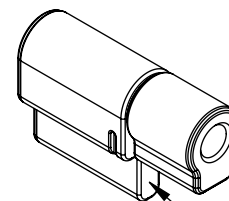
TI-C5M-X.XX-02 CUSTOMER INSTALLATION GEOMETRY

CUSTOMER MATERIAL	D1	D2	L1	L2	L3	L4	L5	L6	L7	L8	R1	CF1	WALL	GAP
DIE CAST ZINC	4.9±0.03	5.05±0.05	3.7±0.05	4.5±0.1	1.9±0.03	5.05 ^{+0.15} _{-0.05}	10±0.05	7±0.1	3.5±0.03	3.65±0.05	0.75±0.1	0.3±0.1 X 45°±5°	1.25 MIN	0.1 MIN
DIE CAST ALUMINUM	4.9±0.03				1.9±0.03				3.5±0.03	3.65±0.05	0.75±0.1			
DELTRIN	4.6±0.015				1.7±0.03				3.2±0.03	3.5±0.05	0.6±0.1			

- DELTRIN DIMENSIONS SPECIFIED, OTHER PLASTICS MAY REQUIRE DIFFERENT MOUNTING OPTIONS.
CONTACT REEL FOR OTHER MOUNTING OPTIONS.

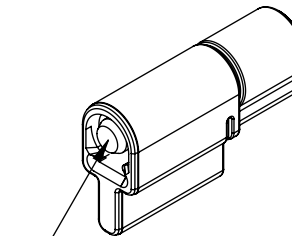


HINGE PRESS

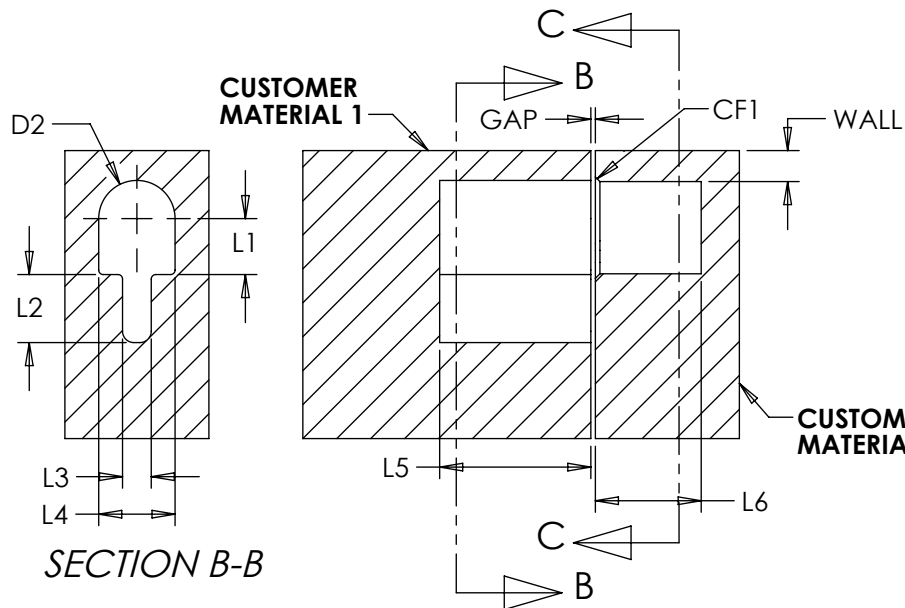


TO INSERT HINGE, PRESS ON SURFACE INDICATED

SHAFT END PRESS



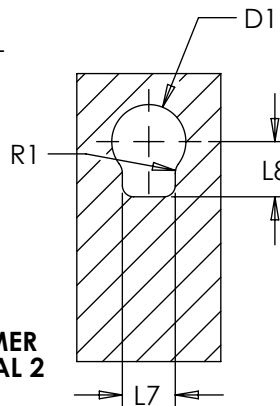
FRONT OF SHAFT MUST BE SUPPORTED DURING INSTALLATION



SECTION B-B

CUSTOMER MATERIAL 1 AND CUSTOMER MATERIAL 2 ALIGNMENT TO BE WITHIN 0.10mm IN ANY DIRECTION TO ENSURE PRODUCT PERFORMANCE.

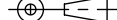
SPECIFICATION SUBJECT TO CHANGE



SECTION C-C

INTERPRET PRINT PER ASME Y14.5M-1994
THIS PRINT IS THE CONFIDENTIAL PROPERTY OF REELL PRECISION MFG.

THIRD ANGLE PROJECTION



LEVEL	DESCRIPTION	DRAWN	DATE	APPROVED
DRAWN: HMA	DATE: 13DEC13	PART NO: 84002-XXX		
CHECKED: STK	DATE: 24APR14	TITLE: TORQUE INSERT		
APPROVED: STK	DATE: 24APR14	DESCRIPTION: TI-C5M		
REVISED: 05OCT18	DIMS: mm	SCALE: 2:1		DO NOT SCALE DRAWING
REELL PRECISION MANUFACTURING 1259 WILLOW LAKE BOULEVARD SAINT PAUL, MINNESOTA 55110-5103, USA				REV: L
SHEET 4 OF 4				