

**CATALOG CODE**  
**SB-X.X-XX-XXX**

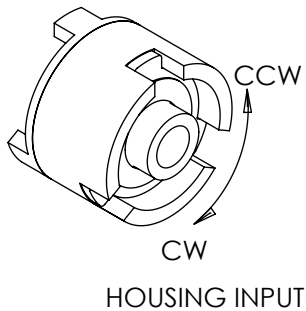
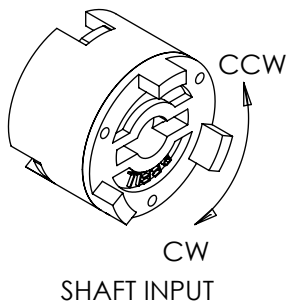
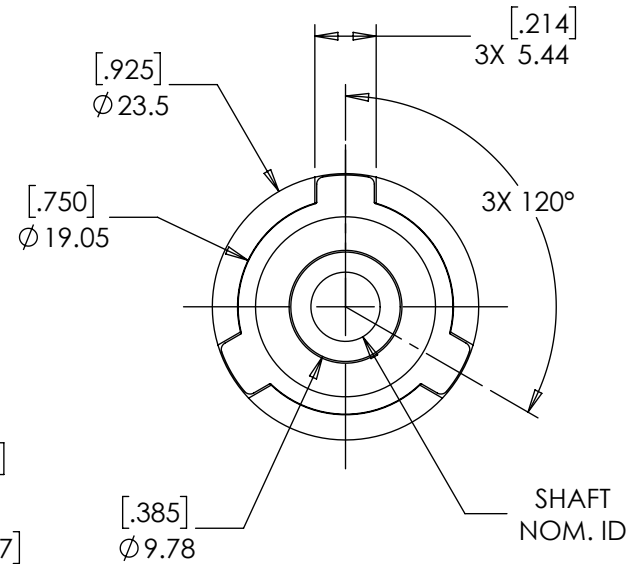
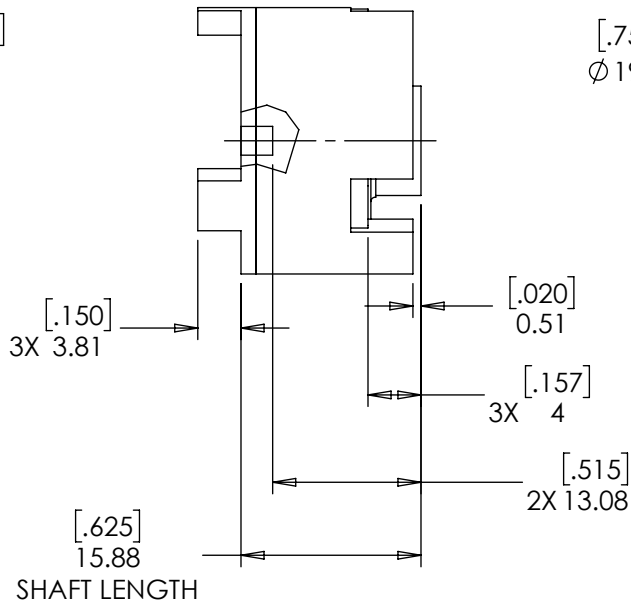
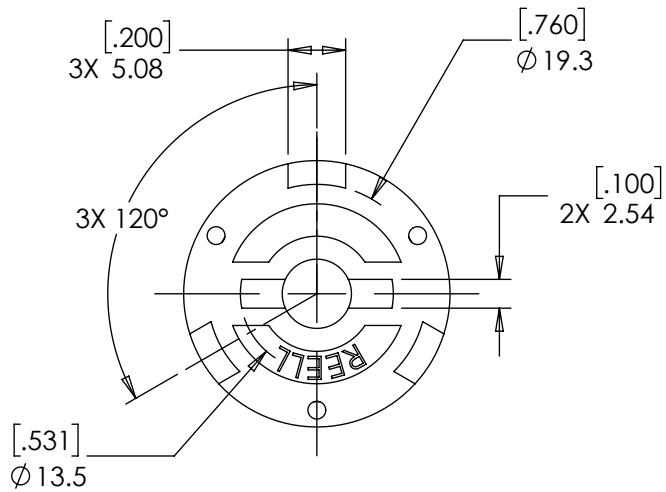
TORQUE (Nm)
0.1
0.2
0.4
0.7

DIRECTION
CW
CCW

BORE (SHAFT INTERFACE)
6mm
1/4 (IN)
8mm

SHAFT NOM. ID
6mm
1/4"
8mm

DYNAMIC TORQUE
0.1 ± 0.02 Nm [0.88 ± 0.183 LB-IN]
0.2 ± 0.04 Nm [1.77 ± 0.355 LB-IN]
0.4 ± 0.08 Nm [3.54 ± 0.709 LB-IN]
0.7 ± 0.14 Nm [6.2 ± 1.244 LB-IN]



ALL DIMENSIONS REFERENCE  
SEE CAD MODEL FOR  
UNSPECIFIED FEATURES

SPECIFICATIONS SUBJECT TO CHANGE

	ECO NO: 07682	PART LIFECYCLE: RELEASED
	APPROVED BY: BOB WAHLSTEDT	DEVELOPMENT CYCLE: PRODUCTION
	APPROVED DATE: 26NOV24	DESCRIPTION:
	PROJECT NO: 0	<h1>SALES DRAWING</h1>
ENGINEER: BOB WAHLSTEDT		
THIS PRINT IS THE CONFIDENTIAL PROPERTY OF REELL PRECISION MFG.	DRAWN BY: DERICK OFFOR	PART NO: SB
INTERPRET PRINT PER ASME Y14.5M-2009	THIRD ANGLE PROJECTION 	REV: J
DIMENSIONS: mm [IN]		SCALE: 1.5:1 DO NOT SCALE DRAWING
		SHEET 1 OF 1