


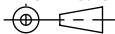
NAME: MH - 13 - X.X

TORQUE Nm
1.0
2.0
3.0

NOTES:

1. DYNAMIC TORQUE AND PART NUMBERS SEE PAGE 2.
2. LIFE: 25,000 CYCLES.
ONE CYCLE = 180° OPEN/180° CLOSED.
FIVE (5) CYCLES PER MINUTE MAX.
3. MATERIAL:
CENTER BRACKET: ENGINEERED PLASTIC
OUTER BRACKET: ENGINEERED PLASTIC
SHAFT: HARDENED STEEL
TORQUE ELEMENT: HARDENED STEEL
4. DESIGNED TO ACCEPT M5 BUTTON HEAD SCREW OR EQUIVALENT.
5. BRACKETS TO BE ORIENTED ±5° WITH RESPECT TO EACH OTHER AS SHOWN.
6. TOTAL TRAVEL 270°.
7. STATIC TORQUE IS NORMALLY WITHIN 10% OF DYNAMIC TORQUE.
8. TOP SURFACE TEXTURED.
9. MATING ASSEMBLIES SHOULD BE DESIGNED TO ALLOW 0.5 mm CLEARANCE AROUND ENTIRE HINGE.
10. USER MUST DETERMINE FITNESS FOR USE IN APPLICATION.

SPECIFICATION SUBJECT TO CHANGE

	ECO NO: 01723	PART LIFECYCLE: RELEASED	
	APPROVED BY: CONNOR DEVINE	DEVELOPMENT CYCLE: PRODUCTION	
	APPROVED DATE: 08JAN20	MOLDED HINGE ASSEMBLY	
	PROJECT NO: 101213		
REELL PRECISION MANUFACTURING 1259 WILLOW LAKE BOULEVARD SAINT PAUL, MINNESOTA 55110-5103, USA	ENGINEER: CONNOR DEVINE	MH13 SERIES	
THIS PRINT IS THE CONFIDENTIAL PROPERTY OF REELL PRECISION MFG.	DRAWN BY: CONNOR DEVINE		
INTERPRET PRINT PER ASME Y14.5M-2009	THIRD ANGLE PROJECTION 	PART NO:	REV: A
	DIMENSIONS: mm	SCALE: 1:1	DO NOT SCALE DRAWING
			SHEET 1 OF 2

CATALOG NUMBER	DYNAMIC TORQUE
MH-13-1.0	1.0 ± 0.3 Nm
MH-13-2.0	2.0 ± 0.4 Nm
MH-13-3.0	3.0 ± 0.6 Nm

ALL HINGE DIMENSIONS REFERENCE
SEE CAD MODEL FOR
UNSPECIFIED FEATURES

CUSTOMER MOUNTING CONFIGURATION

D

C

B

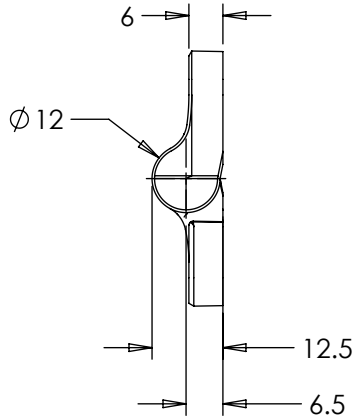
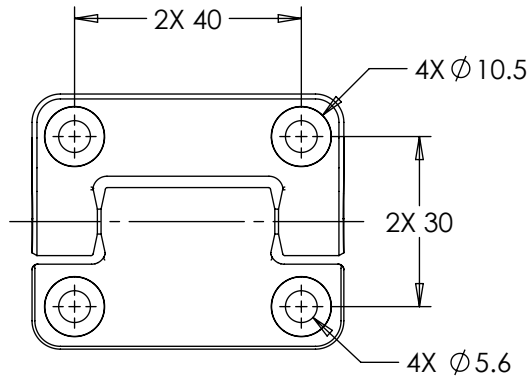
A

D

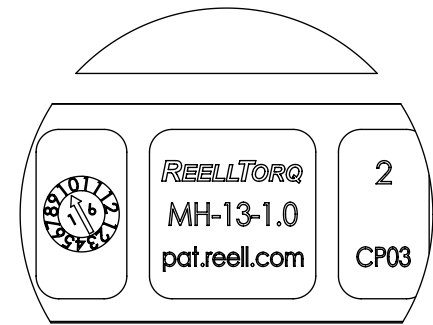
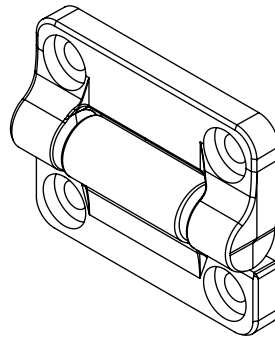
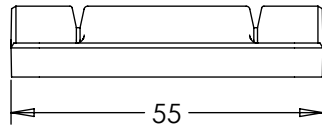
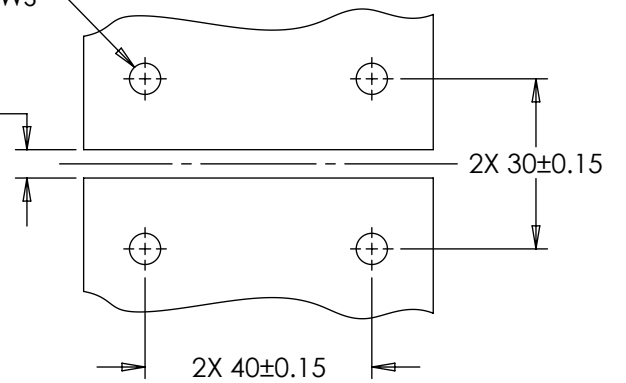
C

B

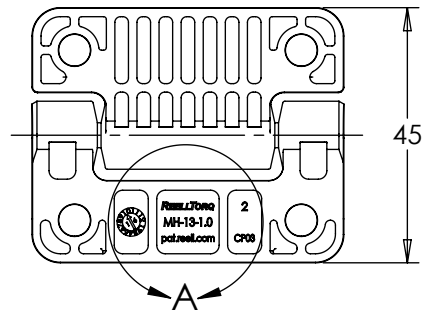
A



FOR M5 SCREWS
DETERMINE MINIMUM
DISTANCE BASED ON PLATE
THICKNESS AND DESIRED
ANGLE OF ROTATION



DETAIL A
SCALE 2:1



SPECIFICATION SUBJECT TO CHANGE

	ECO NO: 01723	PART LIFECYCLE: RELEASED		
	APPROVED BY: CONNOR DEVINE	DEVELOPMENT CYCLE: PRODUCTION		
	APPROVED DATE: 08JAN20	DESCRIPTION:		
	PROJECT NO: 101213	MOLDED HINGE ASSEMBLY		
ENGINEER: CONNOR DEVINE				
REELL PRECISION MANUFACTURING 1259 WILLOW LAKE BOULEVARD SAINT PAUL, MINNESOTA 55110-5103, USA	DRAWN BY: CONNOR DEVINE	PART NO: MH13 SERIES		
THIS PRINT IS THE CONFIDENTIAL PROPERTY OF REELL PRECISION MFG.	THIRD ANGLE PROJECTION 	SCALE: 3:4	DO NOT SCALE DRAWING	REV: A
INTERPRET PRINT PER ASME Y14.5M-2009	DIMENSIONS: mm	SHEET 2 OF 2		