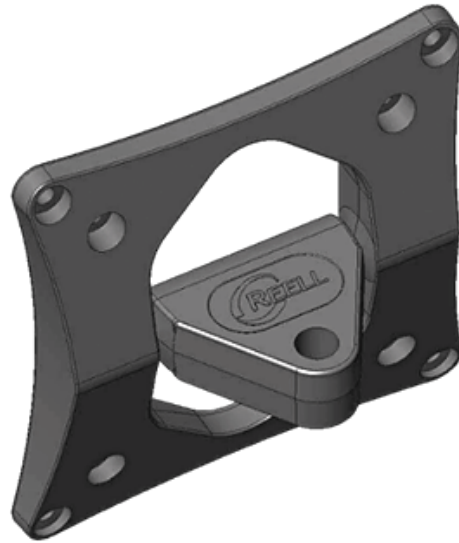


vTilt SELECTION GUIDE

Reell's VESA compatible vTilt Monitor Mount allows users to easily adjust computer displays and monitors to the desired viewing angle. It securely holds monitors in any position without the need for set screws or locking mechanisms.

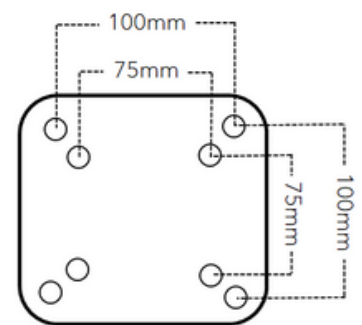


SELECTION PROCESS

Follow this simple 6-step process to select the correct vTilt monitor mount for secure "set and forget" performance

STEP 1:

Verify the monitor is compatible with VESA MIS-D with either 75x75mm or 100x100mm mounting hole configuration



STEP 2:

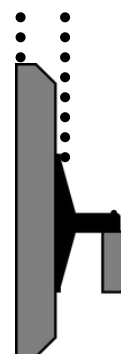
Weigh the computer monitor or display



STEP 3:

Measure the distance (d) from the display mounting surface to the center of gravity

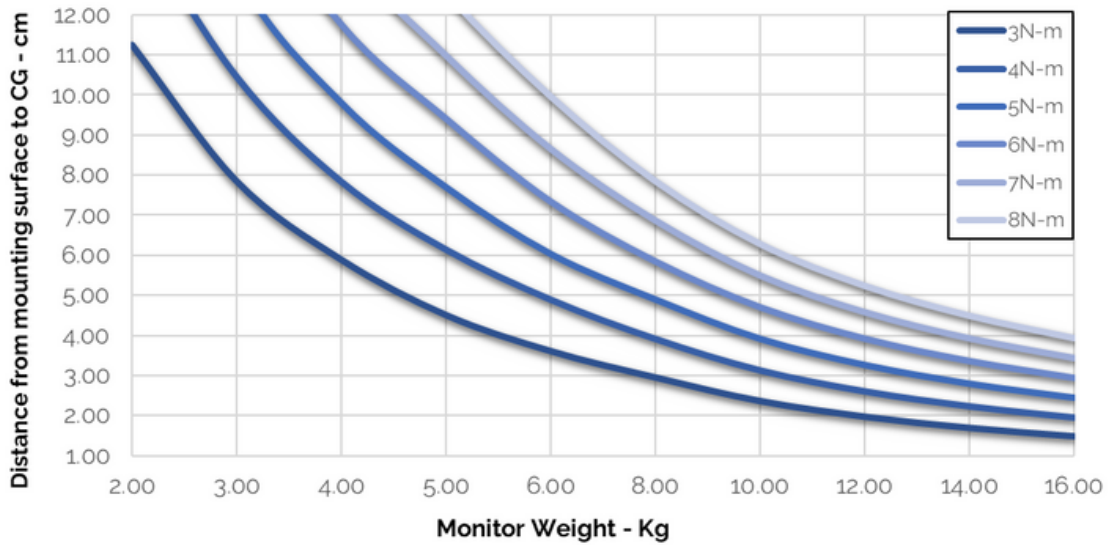
Distance (d)



STEP 4:

Use the monitor weight and center of gravity to select the appropriate torque level from the graph below

vTilt Torque Selection Chart



STEP 5:

Select the best torque profile for the application

Differential Torque

Provides 60% of the rated torque in the upward tilt direction to offset a portion of the monitor weight

One-way Torque

Provides nearly zero torque in the upward tilt direction to offset the weight of heavier monitors

STEP 6:

Select part number from chart below based on desired torque profile and appropriate torque value

Catalog Code	Torque Profile	Rated Torque				Color
		Upward Tilt		Downward Tilt		
vTilt-100-3.0-D-BK	Differential	3.0 Nm	26.6 LB-IN	1.88 Nm	16.6 LB-IN	Black
vTilt-100-4.0-D-BK	Differential	4.0 Nm	35.4 LB-IN	2.50 Nm	22.1 LB-IN	Black
vTilt-100-5.0-D-BK	Differential	5.0 Nm	44.3 LB-IN	3.13 Nm	27.7 LB-IN	Black
vTilt-100-6.0-D-BK	Differential	6.0 Nm	53.1 LB-IN	3.75 Nm	33.2 LB-IN	Black
vTilt-100-8.0-D-BK	Differential	8.0 Nm	70.8 LB-IN	5.0 Nm	44.3 LB-IN	Black
vTilt-100-5.0-OW-BK	One-way	5.0 Nm	44.3 LB-IN	0.9 Nm	8 LB-IN	Black
vTilt-100-6.0-OW-BK	One-way	6.0 Nm	53.1 LB-IN	0.9 Nm	8 LB-IN	Black
vTilt-100-7.0-OW-BK	One-way	7.0 Nm	62.0 LB-IN	0.9 Nm	8 LB-IN	Black
vTilt-100-8.0-OW-BK	One-way	8.0 Nm	70.8 LB-IN	0.9 Nm	8 LB-IN	Black

*Please contact Reell for availability on white vTilt monitor mounts