

NOTES:

1. USER MUST DETERMINE FITNESS FOR USE IN APPLICATION.
2. DYNAMIC TORQUE AND PART NUMBERS SEE PAGE 2.
3. ENVIRONMENTAL CONDITIONS: -20° TO +80°C. UP TO 10% OF LIFE CYCLES AT HOT AND COLD CONDITIONS.
4. LIFE CYCLE: 50,000 TOTAL ADJUSTMENTS. ONE ADJUSTMENT EQUALS MOVEMENT IN ANY DIRECTION UP TO FULL TRAVEL, OR 90° MAX WHEN DUTY CYCLE IS LESS THAN 10% AND SPEED IS LESS THAN 60 RPM.
5. PART MARKED WITH DATE (MOYR) AND CATALOG CODE.
EXAMPLE: 0722
vMX-100-5.0S-01-BK
6. MATERIAL:
COVER AND BASE: ENGINEERED PLASTIC
SHAFT: NITRIDED STEEL
BALL AND TORQUE ELEMENT: HARDENED STEEL
LUBRICANT: MINERAL OIL BASED
7. COUNTERBORE HOLE PATTERN DESIGNED TO MEET VESA MIS-D, 75/100, C.
8. MAX MONITOR WEIGHT 9.5 KG (21 LBS).
9. MAX BENDING MOMENT ON SHAFT = 52 Nm [460 LB-IN].


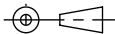
CATALOG CODE

vMX - 100 - X.XX - XX - XX

TORQUE Nm
5.0S - SYMMETRIC
7.0S - SYMMETRIC

SHAFT END
01 - EXTERNAL M10

COLOR
BK - BLACK
WH - WHITE

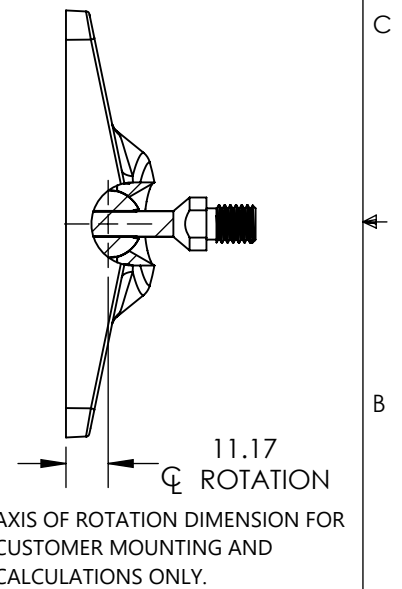
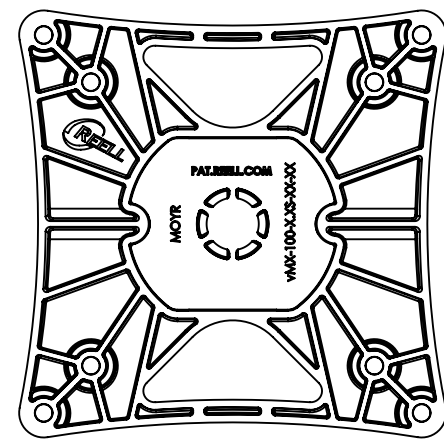
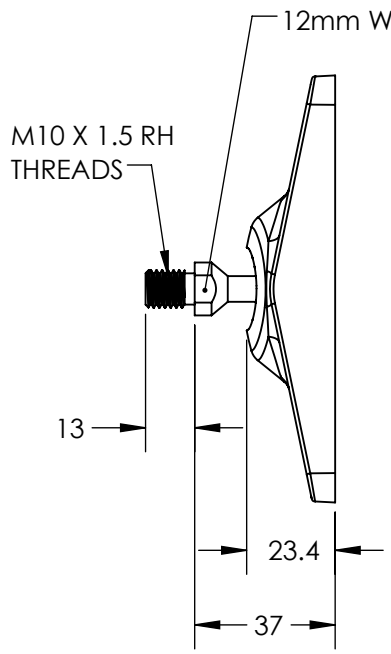
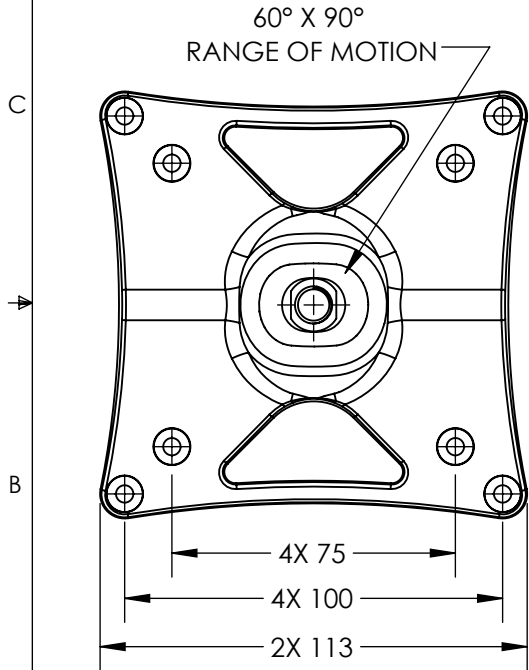
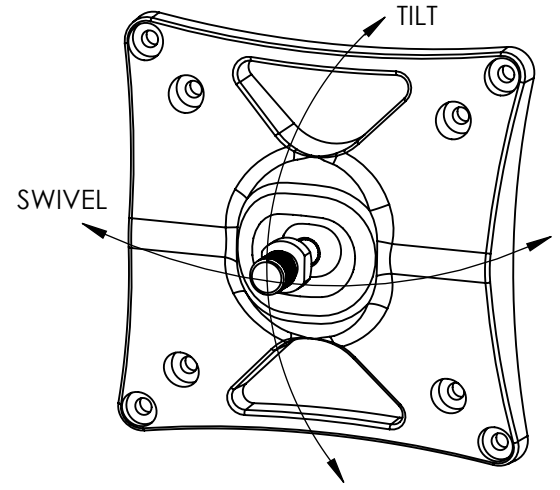
	ECO NO: 07484	PART LIFECYCLE: RELEASED	
	APPROVED BY: TYLER JACOBS	DEVELOPMENT CYCLE: PRODUCTION	
	APPROVED DATE: 27SEP24	DESCRIPTION: SALES DRAWING	
	PROJECT NO: 101585		
REELL PRECISION MANUFACTURING 1259 WILLOW LAKE BOULEVARD SAINT PAUL, MINNESOTA 55110-5103, USA	ENGINEER: TYLER JACOBS	PART NO: vMX-100	
THIS PRINT IS THE CONFIDENTIAL PROPERTY OF REELL PRECISION MFG.	DRAWN BY: TYLER JACOBS		
INTERPRET PRINT PER ASME Y14.5M-2009	THIRD ANGLE PROJECTION 	SCALE: 1:1	DO NOT SCALE DRAWING
	DIMENSIONS: mm		SHEET 1 OF 2

SPECIFICATION SUBJECT TO CHANGE

CATALOG NUMBER	DYNAMIC TORQUE (Nm)		
	TILT	SWIVEL	ROTATIONAL
vMX-100-5.0S-01-XX	5.0 ± 1.5	5.0 ± 1.5	8.2 ± 2.5
vMX-100-7.0S-01-XX	7.0 ± 2.1	7.0 ± 2.1	11.8 ± 3.5

D PRODUCT TORQUE SPECIFICATION AT +20°C.

vMX - 100 - X.XS - 01 - XX



**ALL DIMENSIONS REFERENCE
SEE CAD MODEL FOR UNSPECIFIED FEATURES**

	ECO NO: 07484	PART LIFECYCLE: RELEASED	
	APPROVED BY: TYLER JACOBS	DEVELOPMENT CYCLE: PRODUCTION	
	APPROVED DATE: 27SEP24	DESCRIPTION:	
	PROJECT NO: 101585	<h2>SALES DRAWING</h2>	
ENGINEER: TYLER JACOBS			
REELL PRECISION MANUFACTURING 1259 WILLOW LAKE BOULEVARD SAINT PAUL, MINNESOTA 55110-5103, USA	DRAWN BY: TYLER JACOBS	PART NO: vMX-100	
THIS PRINT IS THE CONFIDENTIAL PROPERTY OF REELL PRECISION MFG.	THIRD ANGLE PROJECTION 	SCALE: 1:2	DO NOT SCALE DRAWING
INTERPRET PRINT PER ASME Y14.5M-2009	DIMENSIONS: mm	SHEET 2 OF 2	

SPECIFICATION SUBJECT TO CHANGE

A

A