

CATALOG CODE

TI-140-X.X-XX

TORQUE Nm
- 1.4
- 1.8
- 2.2
- 2.6
- 3.0
- 3.4
- 3.8
- 4.2

FINS NO.
- 01
- 02

NOTES:

1. APPLICATION CONDITIONS REFERENCE USER MUST DETERMINE FITNESS FOR USE IN APPLICATION.
2. LIFE: 30,000 CYCLES.
ONE CYCLE = 120° OPEN/120° CLOSED.
FIVE(5) CYCLES PER MINUTE MAX.
3. MATERIAL:
BRACKET AND SHAFT END ARE ENGINEERED PLASTIC
SHAFT AND TORQUE ELEMENT ARE HARDENED STEEL
4. TABS ON HINGE TO BE ALIGNED AS SHOWN ±5°.
5. STATIC TORQUE IS NORMALLY WITHIN 10% OF DYNAMIC TORQUE.



REELL PRECISION MANUFACTURING
1259 WILLOW LAKE BOULEVARD
SAINT PAUL, MINNESOTA 55110-5103, USA

THIS PRINT IS THE CONFIDENTIAL PROPERTY OF REELL PRECISION MFG.

INTERPRET PRINT PER ASME Y14.5M-2009

ECO NO: 09067

APPROVED BY: BOB WAHLSTEDT

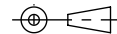
APPROVED DATE: 13APR26

PROJECT NO: 0

ENGINEER: BOB WAHLSTEDT

DRAWN BY: CURT POTTER

THIRD ANGLE PROJECTION



DIMENSIONS: mm

PART LIFECYCLE: RELEASED

DEVELOPMENT CYCLE: PRODUCTION

DESCRIPTION:

SALES DRAWING

PART NO: **TI-140**

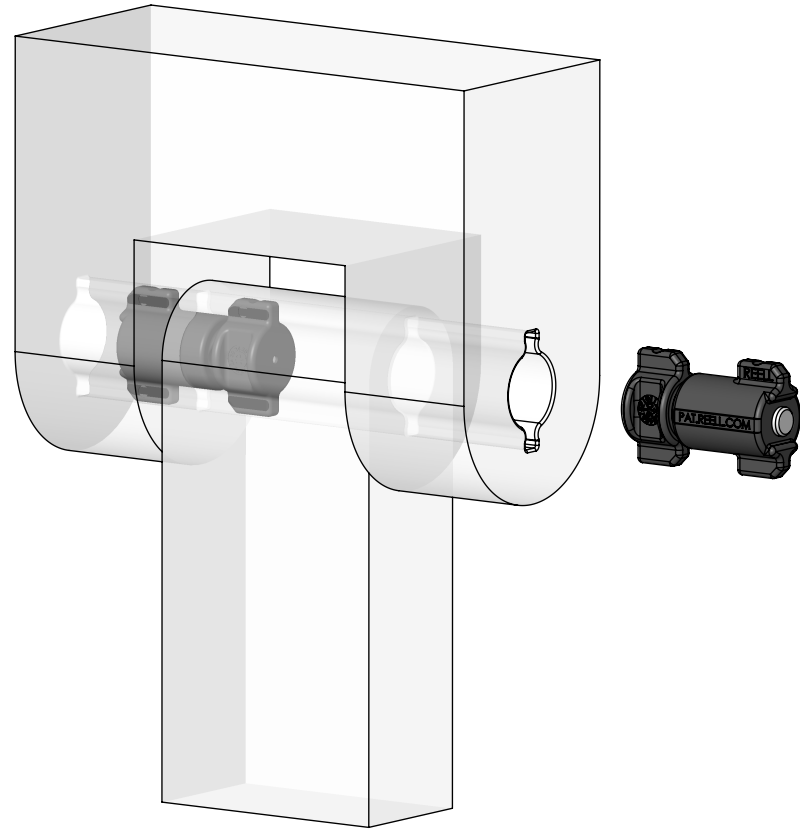
REV: **R**


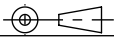
SCALE: 1:1 DO NOT SCALE DRAWING

SHEET 1 OF 5

SPECIFICATIONS SUBJECT TO CHANGE

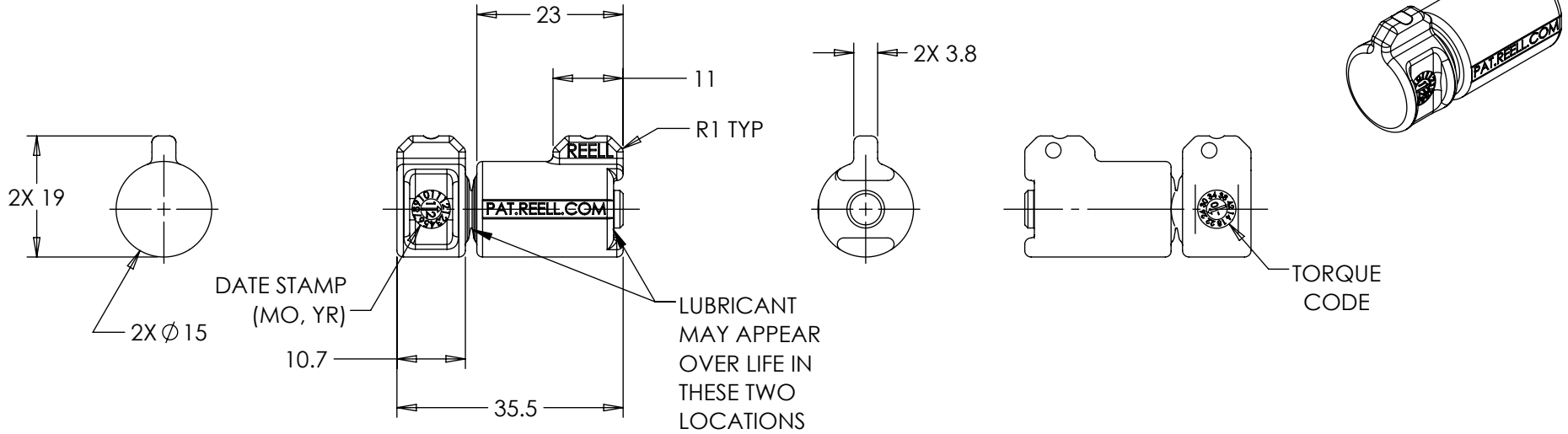
CATALOG CODE		TORQUE CODE	DYNAMIC TORQUE Nm
ONE FIN	TWO FINS		
TI-140-1.4-01	TI-140-1.4-02	14	1.4±0.42
TI-140-1.8-01	TI-140-1.8-02	18	1.8±0.45
TI-140-2.2-01	TI-140-2.2-02	22	2.2±0.44
TI-140-2.6-01	TI-140-2.6-02	26	2.6±0.52
TI-140-3.0-01	TI-140-3.0-02	30	3.0±0.60
TI-140-3.4-01	TI-140-3.4-02	34	3.4±0.68
TI-140-3.8-01	TI-140-3.8-02	38	3.8±0.76
TI-140-4.2-01	TI-140-4.2-02	42	4.2±0.84



	ECO NO: 09067	PART LIFECYCLE: RELEASED	
	APPROVED BY: BOB WAHLSTEDT	DEVELOPMENT CYCLE: PRODUCTION	
	APPROVED DATE: 13APR26	SALES DRAWING	
	PROJECT NO: 0		
REELL PRECISION MANUFACTURING 1259 WILLOW LAKE BOULEVARD SAINT PAUL, MINNESOTA 55110-5103, USA	ENGINEER: BOB WAHLSTEDT	TI-140	
THIS PRINT IS THE CONFIDENTIAL PROPERTY OF REELL PRECISION MFG.	DRAWN BY: CURT POTTER		
INTERPRET PRINT PER ASME Y14.5M-2009	THIRD ANGLE PROJECTION 	SCALE: 2:3	DO NOT SCALE DRAWING

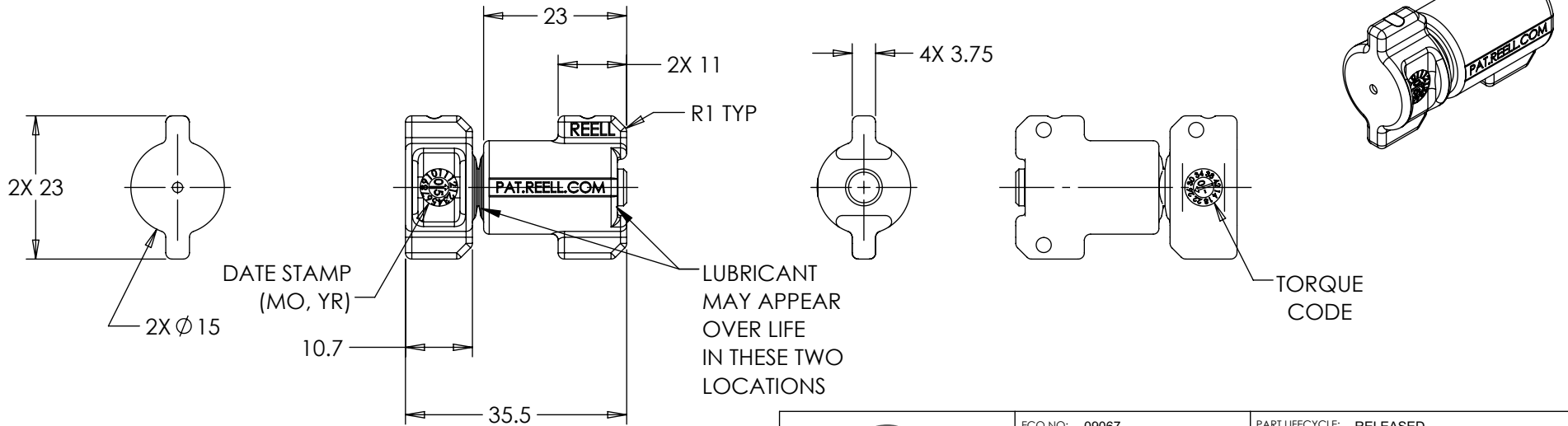
SPECIFICATIONS SUBJECT TO CHANGE

TI -140-X.X-01




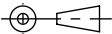
TI -140-X.X-02

ORIENTATION MAY VARY



ALL DIMENSIONS REFERENCE
SEE CAD MODEL FOR UNSPECIFIED FEATURES.

SPECIFICATIONS SUBJECT TO CHANGE

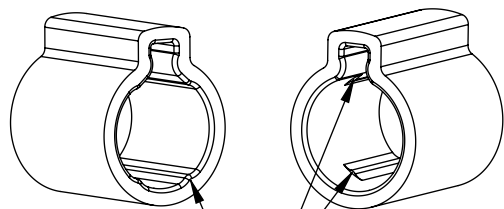
 REELL PRECISION MANUFACTURING 1259 WILLOW LAKE BOULEVARD SAINT PAUL, MINNESOTA 55110-5103, USA	ECO NO: 09067	PART LIFECYCLE: RELEASED
	APPROVED BY: BOB WAHLSTEDT	DEVELOPMENT CYCLE: PRODUCTION
	APPROVED DATE: 13APR26	DESCRIPTION:
	PROJECT NO: 0	SALES DRAWING
THIS PRINT IS THE CONFIDENTIAL PROPERTY OF REELL PRECISION MFG.	ENGINEER: BOB WAHLSTEDT	PART NO: TI-140
INTERPRET PRINT PER ASME Y14.5M-2009	DRAWN BY: CURT POTTER	
	THIRD ANGLE PROJECTION 	SCALE: 1:1
	DIMENSIONS: mm	DO NOT SCALE DRAWING
		SHEET 3 OF 5

TI -140-X.X-01

MOUNTING RECOMMENDATION

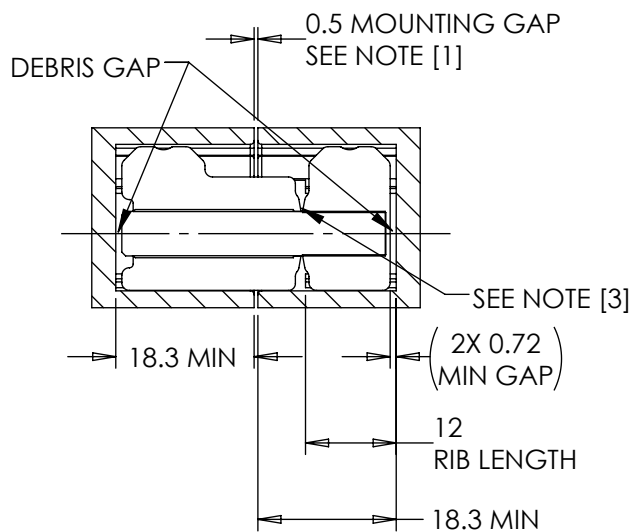
NOTES:

- [1] LOCATE MOUNTING GAP OVER HINGE BODY FOR ADDITIONAL SUPPORT.
- [2] GEOMETRY BETWEEN POINTS E & F CCW MAY VARY IF DESIRED (CUTTER RELIEF).
- [3] INSERT GAP MAY CHANGE DURING INSTALLATION.

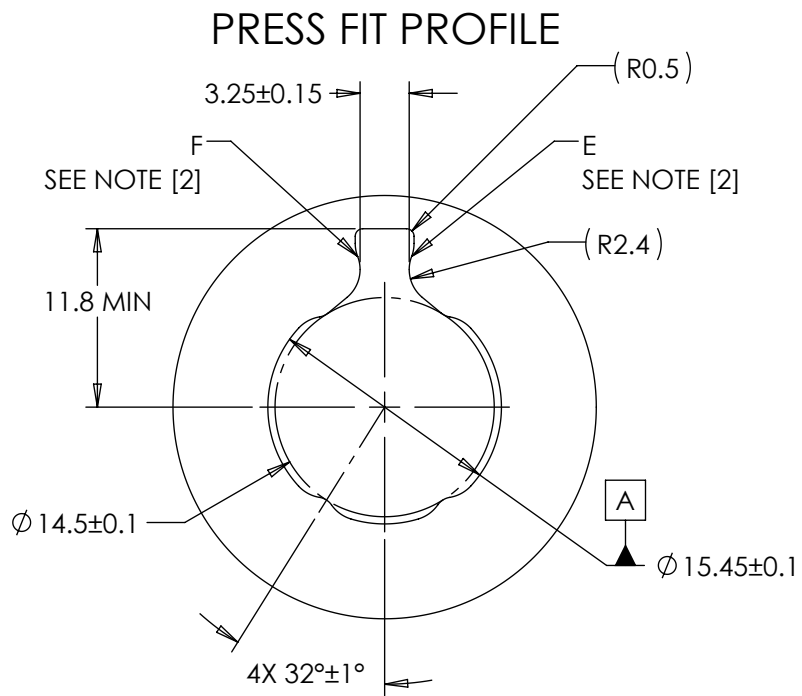
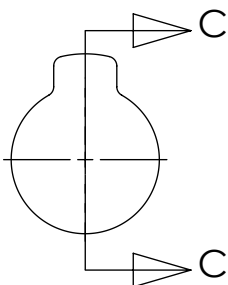


LONG SIDE OF INSERT
ACCEPTS FULL
LENGTH RIBS

SHORT SIDE OF INSERT
REQUIRES PARTIAL
LENGTH RIBS



SECTION C-C



SCALE 2:1

SPECIFICATIONS SUBJECT TO CHANGE

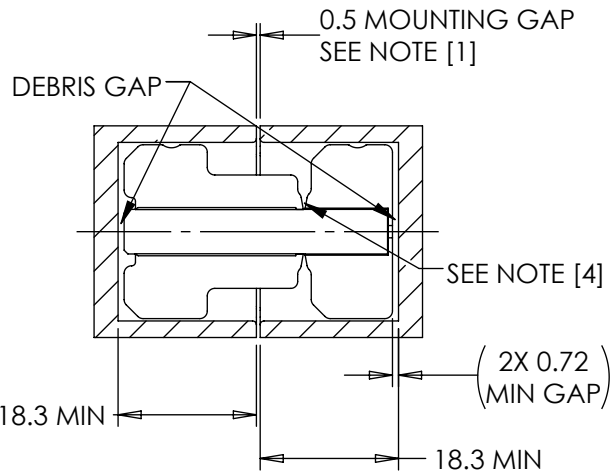
	ECO NO: 09067	PART LIFECYCLE: RELEASED		
	APPROVED BY: BOB WAHLSTEDT	DEVELOPMENT CYCLE: PRODUCTION		
	APPROVED DATE: 13APR26	DESCRIPTION:		
	PROJECT NO: 0	SALES DRAWING		
REELL PRECISION MANUFACTURING 1259 WILLOW LAKE BOULEVARD SAINT PAUL, MINNESOTA 55110-5103, USA	ENGINEER: BOB WAHLSTEDT	PART NO: TI-140		
THIS PRINT IS THE CONFIDENTIAL PROPERTY OF REELL PRECISION MFG.	DRAWN BY: CURT POTTER		REV: R	
INTERPRET PRINT PER ASME Y14.5M-2009	THIRD ANGLE PROJECTION 	SCALE: 1:1	DO NOT SCALE DRAWING	SHEET 4 OF 5

TI - 140-X.X-02

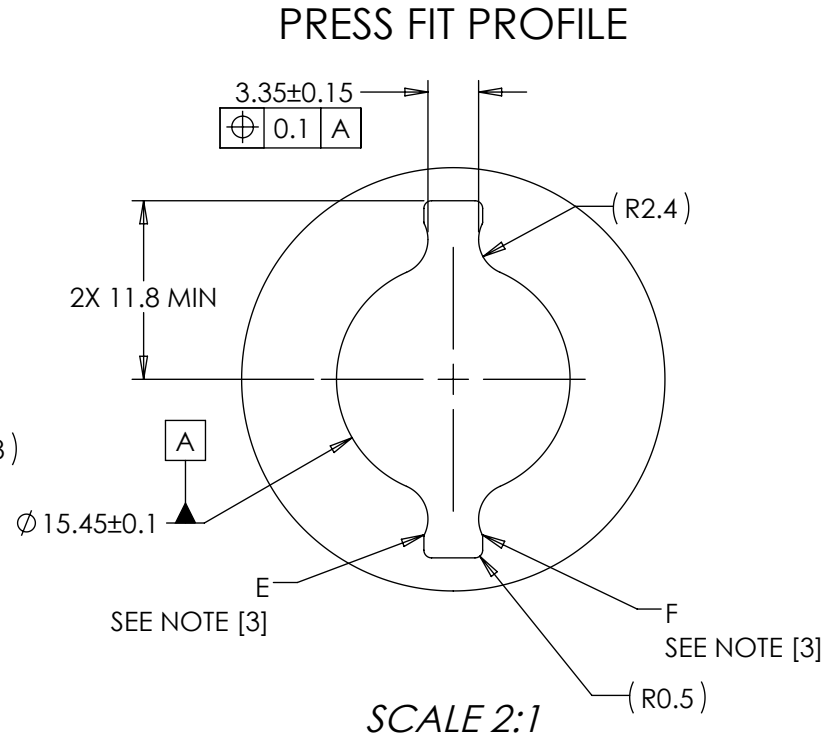
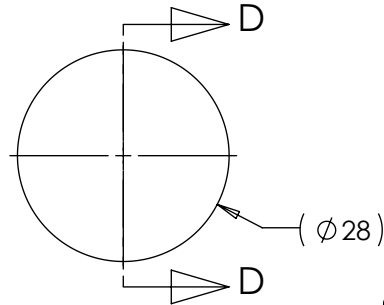
MOUNTING RECOMMENDATION

NOTES:

- [1] LOCATE MOUNTING GAP OVER HINGE BODY FOR ADDITIONAL SUPPORT.
2. TWO FIN TORQUE INSERTS CAN BE INSERTED EITHER ORIENTATION.
- [3] GEOMETRY BETWEEN POINTS E & F CCW MAY VARY IF DESIRED (CUTTER RELIEF).
- [4] INSERT GAP MAY CHANGE DURING INSTALLATION.



SECTION D-D



SCALE 2:1

SPECIFICATIONS SUBJECT TO CHANGE

	ECO NO: 09067	PART LIFECYCLE: RELEASED
	APPROVED BY: BOB WAHLSTEDT	DEVELOPMENT CYCLE: PRODUCTION
	APPROVED DATE: 13APR26	DESCRIPTION:
	PROJECT NO: 0	SALES DRAWING
REELL PRECISION MANUFACTURING 1259 WILLOW LAKE BOULEVARD SAINT PAUL, MINNESOTA 55110-5103, USA	ENGINEER: BOB WAHLSTEDT	PART NO: TI-140
THIS PRINT IS THE CONFIDENTIAL PROPERTY OF REELL PRECISION MFG.	DRAWN BY: CURT POTTER	
INTERPRET PRINT PER ASME Y14.5M-2009	THIRD ANGLE PROJECTION 	SCALE: 1:1
	DIMENSIONS: mm	DO NOT SCALE DRAWING
		SHEET 5 OF 5