

CATALOG CODE

TI-150-X.X-X-XX

TORQUE N-m
2.0
3.0
4.0

DIRECTION
F - ONE WAY FORWARD
R - ONE WAY REVERSE

FIN NO.
01

NOTES:

- APPLICATION CONDITIONS REFERENCE USER MUST DETERMINE FITNESS FOR USE IN APPLICATION.
- LIFE: 25,000 CYCLES.
ONE CYCLE = 120° OPEN/ 120° CLOSED
FIVE(5) CYCLES PER MINUTE MAX.
- MATERIAL:
BRACKET AND SHAFT END ARE ENGINEERED PLASTIC
SHAFT AND TORQUE ELEMENT ARE HARDENED STEEL
MINERAL OIL BASED LUBRICANT
- TAB MAY BE MISALIGNED DUE TO SHIPPING. MISALIGNMENT IS EASILY FIXED BY ROTATING THE BRACKET IN THE TORQUE FREE DIRECTION.
- STATIC TORQUE IS NORMALLY WITHIN 10% OF DYNAMIC TORQUE.
- [6] ARROW INDICATES HIGH TORQUE DIRECTION FOR SPECIFIED CONFIGURATION



REELL PRECISION MANUFACTURING
1259 WILLOW LAKE BOULEVARD
SAINT PAUL, MINNESOTA 55110-5103, USA

THIS PRINT IS THE CONFIDENTIAL PROPERTY
OF REELL PRECISION MFG.

INTERPRET PRINT PER ASME Y14.5M-2009

ECO NO: 03977

APPROVED BY: MICHAEL BEALE

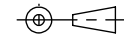
APPROVED DATE: 22JUN21

PROJECT NO: 101269

ENGINEER: MICHAEL BEALE

DRAWN BY: MICHAEL BEALE

THIRD ANGLE PROJECTION



DIMENSIONS: mm

PART LIFECYCLE: RELEASED

DEVELOPMENT CYCLE: PRODUCTION

DESCRIPTION:

SALES DRAWING

PART NO: TI-150

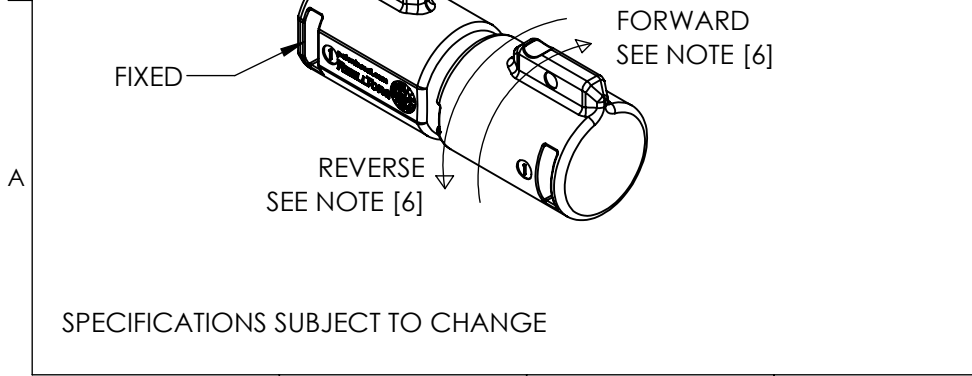
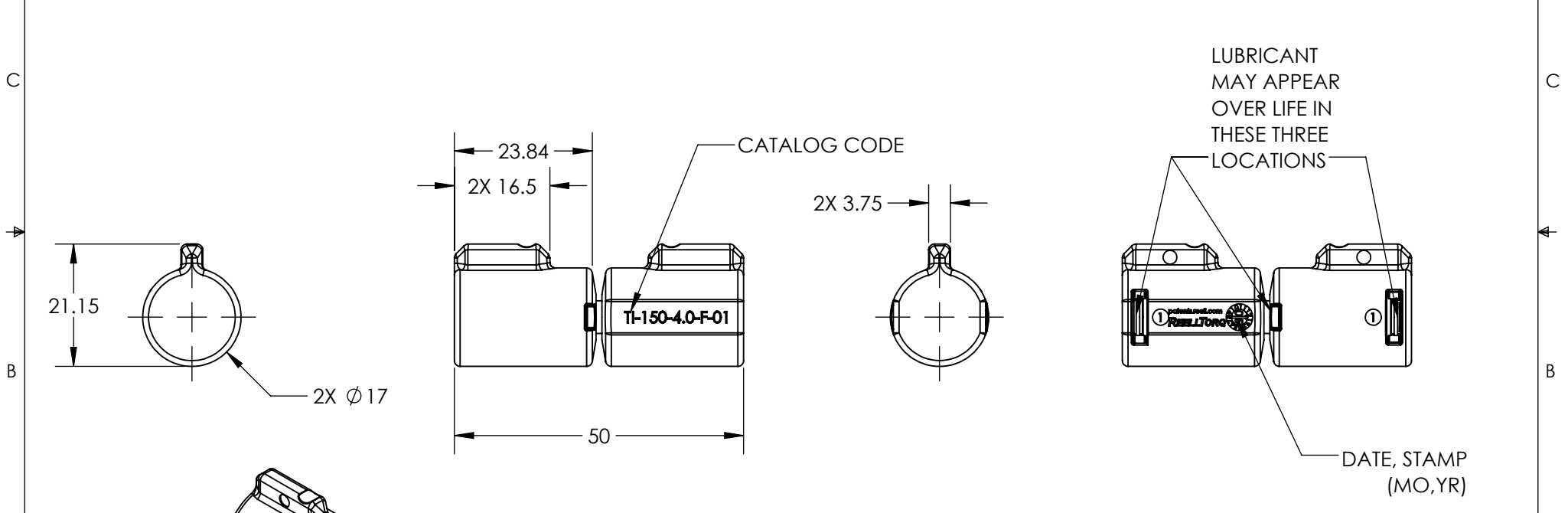
REV: B

SCALE: 2:1 DO NOT SCALE DRAWING

SHEET 1 OF 4

SPECIFICATION SUBJECT TO CHANGE

CATALOG CODE	DYNAMIC TORQUE FORWARD DIRECTION	DYNAMIC TORQUE REVERSE DIRECTION
	NOMINAL	NOMINAL
	Nm	Nm
TI-150-2.0-F-01	2.0±0.6	1MAX
TI-150-3.0-F-01	3.0±0.9	1MAX
TI-150-4.0-F-01	4.0±1.2	1MAX
TI-150-2.0-R-01	1MAX	2.0±0.6
TI-150-3.0-R-01	1MAX	3.0±0.9
TI-150-4.0-R-01	1MAX	4.0±1.2



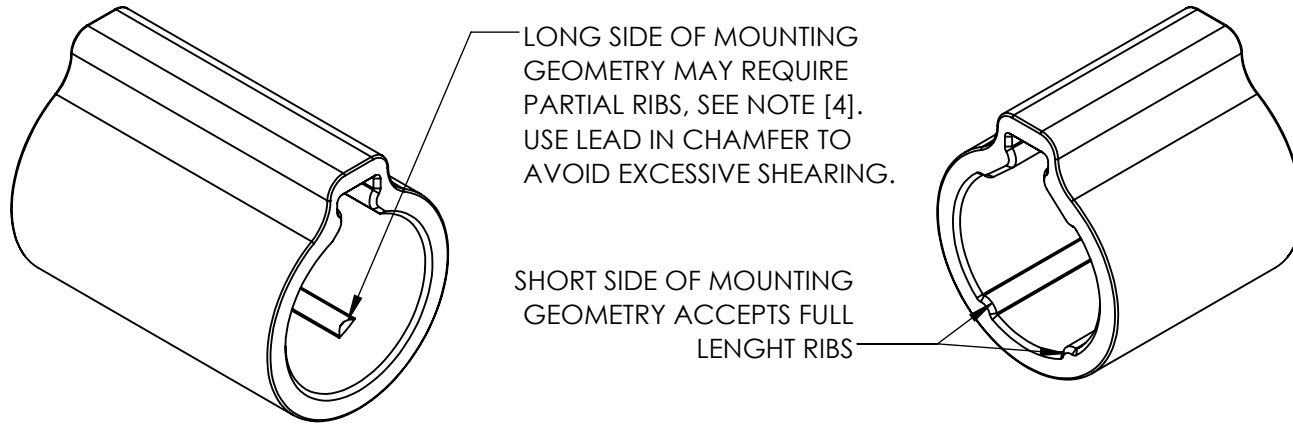
ALL DIMENSIONS REFERENCE
SEE CAD MODEL FOR UNSPECIFIED FEATURES.

SPECIFICATIONS SUBJECT TO CHANGE

	ECO NO: 03977	PART LIFECYCLE: RELEASED	
	APPROVED BY: MICHAEL BEALE	DEVELOPMENT CYCLE: PRODUCTION	
	APPROVED DATE: 22 JUN 21	DESCRIPTION:	
	PROJECT NO: 101269	<h1>SALES DRAWING</h1>	
ENGINEER: MICHAEL BEALE			
REELL PRECISION MANUFACTURING 1259 WILLOW LAKE BOULEVARD SAINT PAUL, MINNESOTA 55110-5103, USA	DRAWN BY: MICHAEL BEALE	PART NO: TI-150	
THIS PRINT IS THE CONFIDENTIAL PROPERTY OF REELL PRECISION MFG.	THIRD ANGLE PROJECTION 	SCALE: 1:1	DO NOT SCALE DRAWING
INTERPRET PRINT PER ASME Y14.5M-2009	DIMENSIONS: mm	REVISION: B	SHEET 2 OF 4

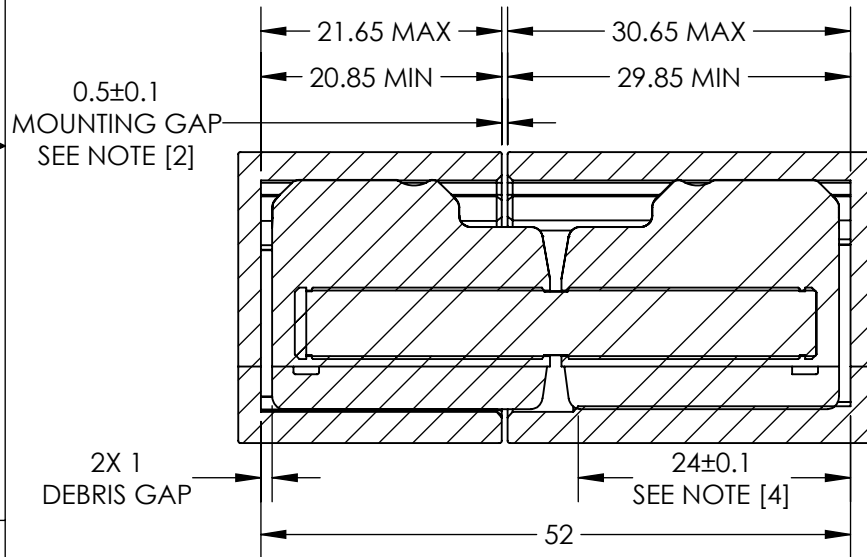
TI-150-X.X-X-01

MOUNTING RECOMMENDATION

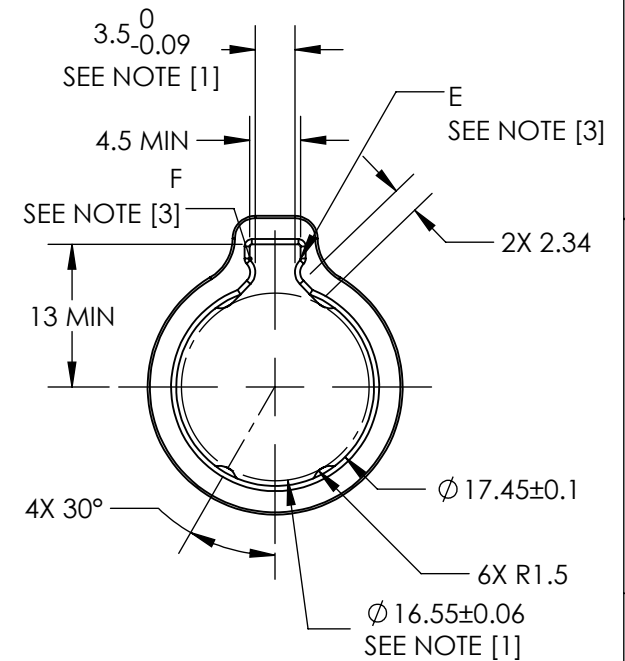
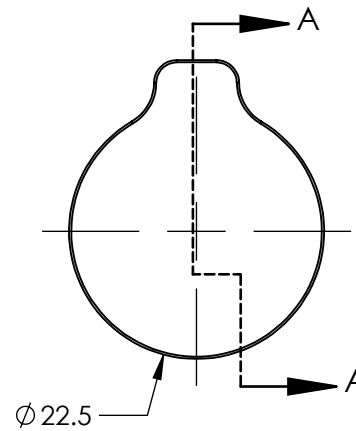


NOTES:

- [1] DOUBLE THE NEGATIVE TOLERANCE WHEN PRESSING INTO PLASTIC.
- [2] LOCATE MOUNTING GAP OVER HINGE BODY FOR ADDITIONAL SUPPORT.
- [3] GEOMETRY BETWEEN POINTS E & F CCW MAY VARY IF DESIRED (CUTTER RELIEF).
- [4] LONG SIDE OF MOUNTING GEOMETRIES REQUIRE PARTIAL RIBS FOR METAL PARTS WITH $\leq 1.0^\circ$ OF DRAFT AND $\leq 1.8^\circ$ FOR PLASTIC PARTS.



SECTION A-A



	ECO NO: 03977	PART LIFECYCLE: RELEASED	
	APPROVED BY: MICHAEL BEALE	DEVELOPMENT CYCLE: PRODUCTION	
	APPROVED DATE: 22 JUN 21	DESCRIPTION:	
	PROJECT NO: 101269	SALES DRAWING	
REELL PRECISION MANUFACTURING 1259 WILLOW LAKE BOULEVARD SAINT PAUL, MINNESOTA 55110-5103, USA	ENGINEER: MICHAEL BEALE	PART NO: TI-150	
THIS PRINT IS THE CONFIDENTIAL PROPERTY OF REELL PRECISION MFG.	DRAWN BY: MICHAEL BEALE		REV: B
INTERPRET PRINT PER ASME Y14.5M-2009	THIRD ANGLE PROJECTION 	SCALE: 3:2	DO NOT SCALE DRAWING
	DIMENSIONS: mm		SHEET 3 OF 4

TI-150-X.X-X-01

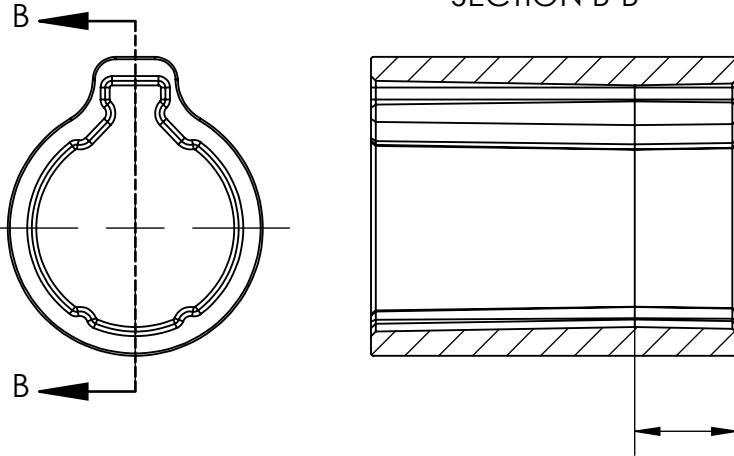
MOUNTING RECOMMENDATION WITH DRAFT

NOTES:

- [1] WHEN DRAFTING BETWEEN 1° AND 2°: ADD 0.1 mm OF INTERFERENCE OVER THE TAB, FROM 3.5 NOM. TO 3.4 NOM. TO GUARANTEE CONTACT OVER FULL LENGTH OF THE TAB
- [2] NEUTRAL PLANE INDICATES THE PLANE OF NOMINAL INTERFERENCE RECOMMENDED ON PREVIOUS PAGE.
- 3. LARGE DRAFT ANGLES WILL REDUCE RADIAL LOAD SUPPORT.

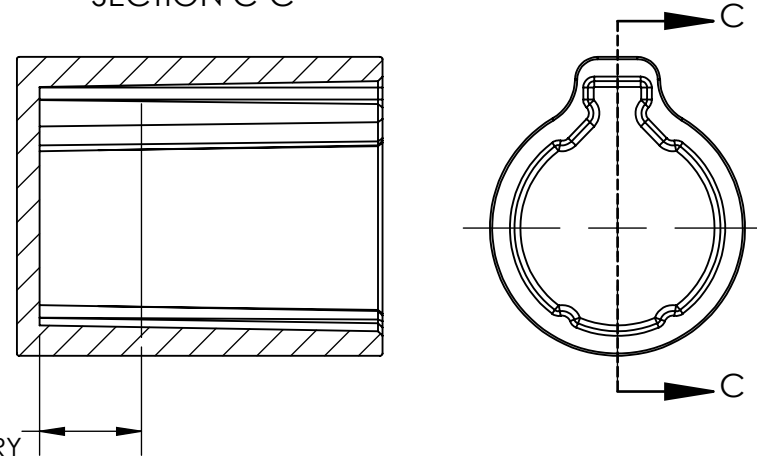
DOUBLE PULL DRAFTS

SECTION B-B


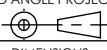


SINGLE PULL DRAFTS

SECTION C-C



9±0.25
NEUTRAL PLAN FROM END,
LONG AND SHORT GEOMETRY
SEE NOT [1] & [2]

	ECO NO: 03977	PART LIFECYCLE: RELEASED			
	APPROVED BY: MICHAEL BEALE	DEVELOPMENT CYCLE: PRODUCTION			
	APPROVED DATE: 22 JUN 21	DESCRIPTION:			
	PROJECT NO: 101269	SALES DRAWING			
REELL PRECISION MANUFACTURING 1259 WILLOW LAKE BOULEVARD SAINT PAUL, MINNESOTA 55110-5103, USA	ENGINEER: MICHAEL BEALE	<table border="1" style="width: 100%;"> <tr> <td style="width: 60%;">PART NO: TI-150</td> <td style="width: 40%;">REV: B</td> </tr> </table>		PART NO: TI-150	REV: B
PART NO: TI-150	REV: B				
THIS PRINT IS THE CONFIDENTIAL PROPERTY OF REELL PRECISION MFG.	DRAWN BY: MICHAEL BEALE				
INTERPRET PRINT PER ASME Y14.5M-2009	THIRD ANGLE PROJECTION 	SCALE: 3:2	DO NOT SCALE DRAWING		
	DIMENSIONS: mm	SHEET 4 OF 4			