

CATALOG CODE DX-100-X.X/X.X

TORQUE Nm (AXIS A/AXIS B)


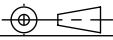
0.5/0.5
1.0/1.0
1.5/1.5
0.5/1.5
1.5/0.5
0.3/0.3

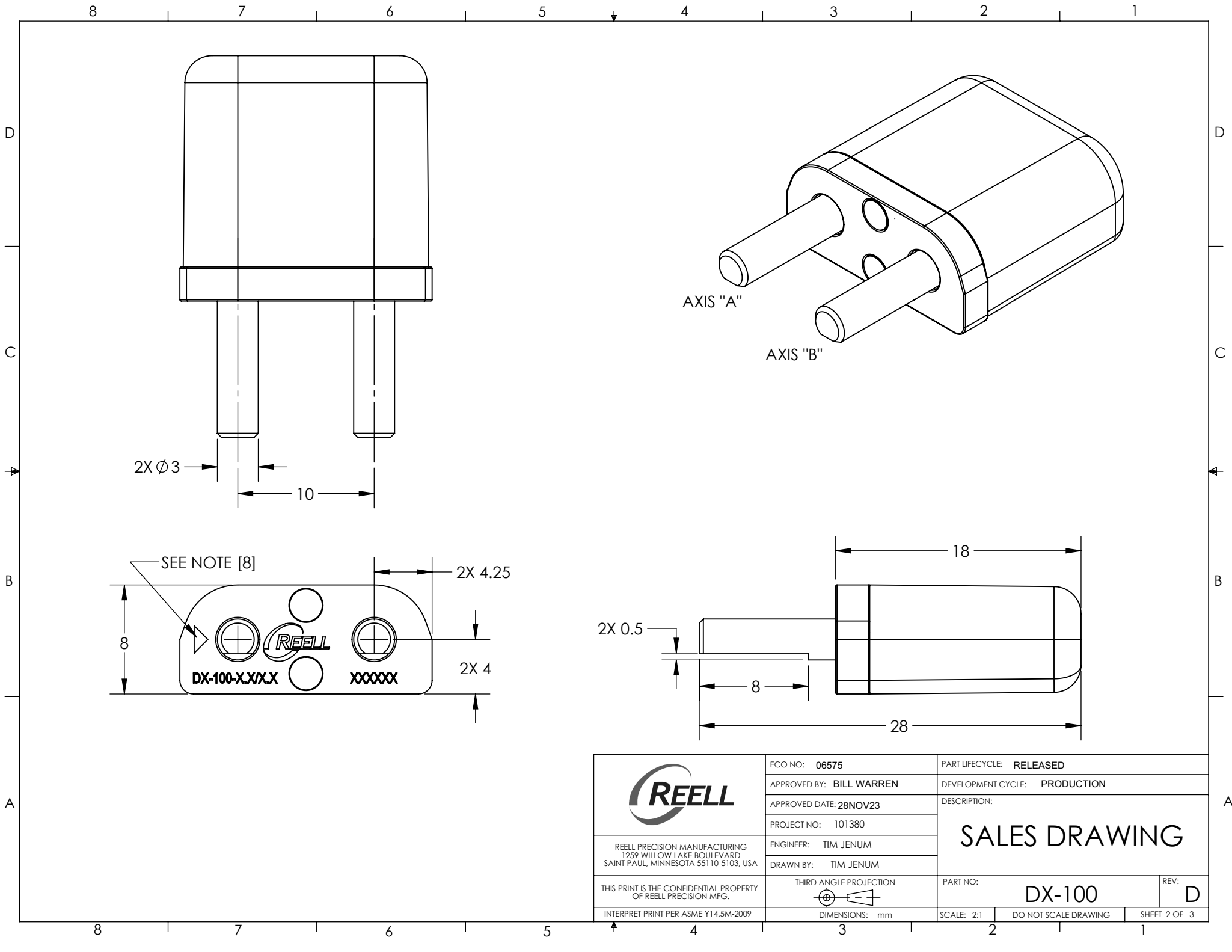
NOTES:


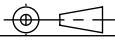
1. USER MUST DETERMINE FITNESS FOR USE IN APPLICATION.
2. ENVIRONMENTAL CONDITIONS: -20°C to 80°C.
3. PRODUCT TORQUE SPECIFICATION: DYNAMIC TORQUE $\pm 20\%$ OF NOMINAL
4. LIFE: 50,000 CYCLES. ONE CYCLE CONSISTS OF 90° CW AND 90° CCW AT 10% DUTY CYCLE FOR SPEEDS LESS THAN 100 RPM.
5. FINISH: NON-COSMETIC.
6. CUSTOMER IS RESPONSIBLE FOR CHECKING COMPATIBILITY OF REELL LUBRICANTS WITH PLASTICS USED.
7. MATERIALS:
BRACKET = ZINC, PLATED
FRONT PLATE = STAINLESS STEEL
SHAFT = STEEL
TORQUE ELEMENTS = STEEL
LUBRICATION = MINERAL BASED
- [8]. THE ARROW IS A DESIGNATOR OF WHICH AXIS IS THE HIGHER TORQUE IN AN ASSEMBLY. THE ARROW IS NOT PRESENT IN ASSEMBLIES THAT HAVE THE SAME TORQUE IN AXIS "A" AND "B"

FOR PATENTS SEE:
pat.reell.com (PRODUCT CODE: CP15)

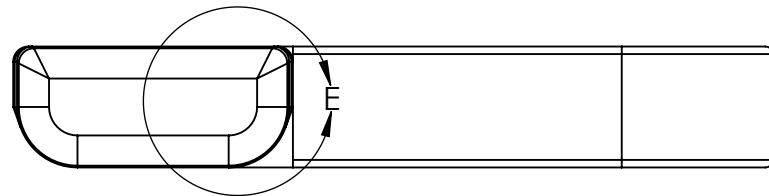
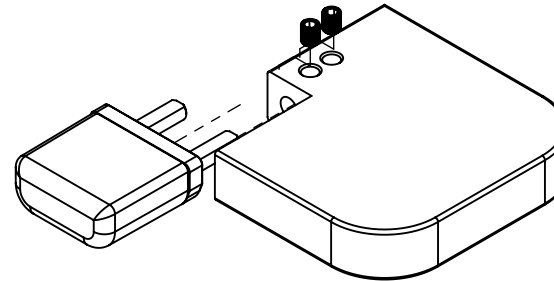
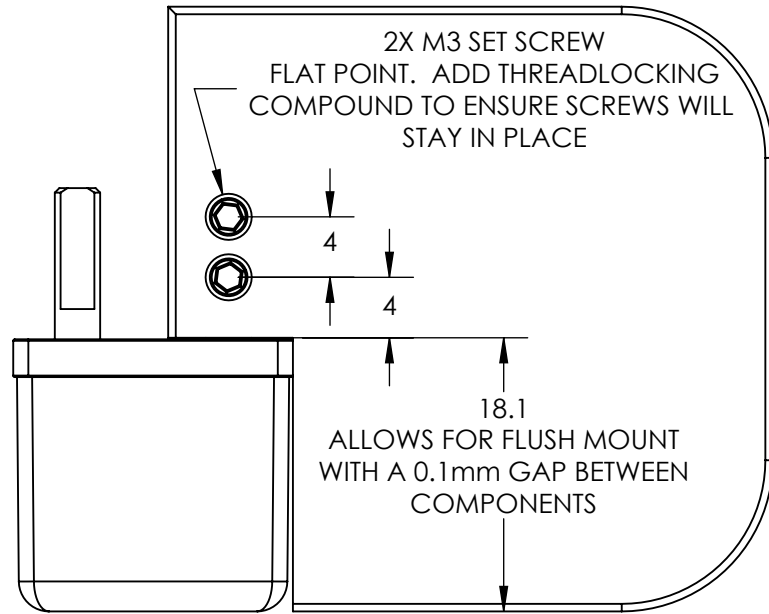
SPECIFICATIONS SUBJECT TO CHANGE

	ECO NO: 06575	PART LIFECYCLE: RELEASED		
	APPROVED BY: BILL WARREN	DEVELOPMENT CYCLE: PRODUCTION		
	APPROVED DATE: 28NOV23	DESCRIPTION:		
	PROJECT NO: 101380	SALES DRAWING		
REELL PRECISION MANUFACTURING 1259 WILLOW LAKE BOULEVARD SAINT PAUL, MINNESOTA 55110-5103, USA	ENGINEER: TIM JENUM	PART NO: DX-100 REV: D		
THIS PRINT IS THE CONFIDENTIAL PROPERTY OF REELL PRECISION MFG.	DRAWN BY: TIM JENUM			
INTERPRET PRINT PER ASME Y14.5M-2009	THIRD ANGLE PROJECTION 	SCALE: 2:1	DO NOT SCALE DRAWING	SHEET 1 OF 3

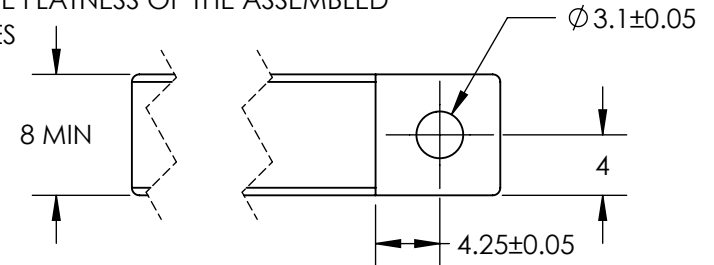


	ECO NO: 06575	PART LIFECYCLE: RELEASED	
	APPROVED BY: BILL WARREN	DEVELOPMENT CYCLE: PRODUCTION	
	APPROVED DATE: 28NOV23	DESCRIPTION:	
	PROJECT NO: 101380	SALES DRAWING	
REELL PRECISION MANUFACTURING 1259 WILLOW LAKE BOULEVARD SAINT PAUL, MINNESOTA 55110-5103, USA	ENGINEER: TIM JENUM	PART NO: DX-100	
THIS PRINT IS THE CONFIDENTIAL PROPERTY OF REELL PRECISION MFG.	DRAWN BY: TIM JENUM	REV: D	
	THIRD ANGLE PROJECTION 	SCALE: 2:1	
	DIMENSIONS: mm	DO NOT SCALE DRAWING	SHEET 2 OF 3

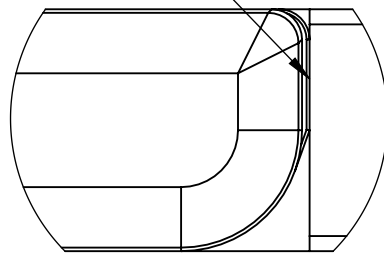
MOUNTING RECOMMENDATIONS



POSITION OF CENTERLINE OF THE HOLE TO INDICATED SURFACE IS IMPORTANT TO THE FLATNESS OF THE ASSEMBLED PLATES



CONTACT RELATIONSHIP BETWEEN THE HINGE AND THE PLATE. THIS PROVIDES THE STOP TO THE TRAVEL OF THE PLATE AND SETS THE ANGLE. TOLERANCE VARIATION MAY AFFECT ANGLE



DETAIL E
SCALE 4 : 1

	ECO NO: 06575	PART LIFECYCLE: RELEASED	
	APPROVED BY: BILL WARREN	DEVELOPMENT CYCLE: PRODUCTION	
	APPROVED DATE: 28NOV23	DESCRIPTION:	
	PROJECT NO: 101380	SALES DRAWING	
REELL PRECISION MANUFACTURING 1259 WILLOW LAKE BOULEVARD SAINT PAUL, MINNESOTA 55110-5103, USA	ENGINEER: TIM JENUM	PART NO: DX-100	
THIS PRINT IS THE CONFIDENTIAL PROPERTY OF REELL PRECISION MFG.	DRAWN BY: TIM JENUM	REV: D	
	THIRD ANGLE PROJECTION 	SCALE: 2:1	DO NOT SCALE DRAWING
	INTERPRET PRINT PER ASME Y14.5M-2009	DIMENSIONS: mm	SHEET 3 OF 3