


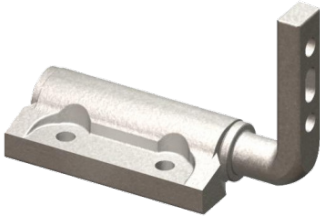
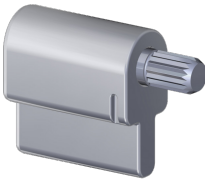


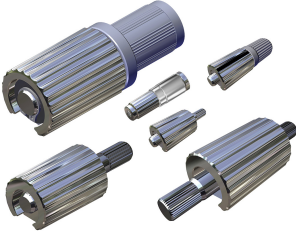
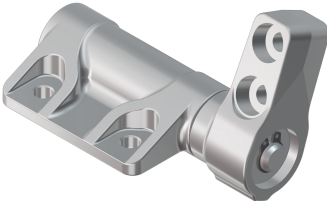
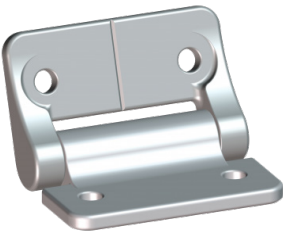




# Standard Position Hinges & Torque Inserts

| MH12  |   | MH-14  |  |
|---|---|--|--|
|    | <ul style="list-style-type: none"> <li>• Weighs only 15 grams</li> <li>• 270° rotation</li> <li>• 4 torque values</li> <li>• Range 0.4 to 1.6 N-m</li> <li>• Black nylon housing</li> <li>• 25,000 cycle life</li> </ul> <p><a href="#">Additional Product Info</a></p>   |    | <ul style="list-style-type: none"> <li>• 270° rotation</li> <li>• 12 torque values</li> <li>• Range 1.4 to 5.8 N-m</li> <li>• Black nylon housing</li> <li>• 20,000 cycle life</li> </ul> <p><a href="#">Additional Product Info</a></p>   |
| MH15  |   | MH-18  |  |
|    | <ul style="list-style-type: none"> <li>• 270° rotation</li> <li>• 7 torque values</li> <li>• Range 2.0 to 8.0 N-m</li> <li>• Asymmetric torque for easy lift</li> <li>• Black nylon housing</li> <li>• 20,000 cycle life</li> </ul> <p><a href="#">Additional Product Info</a></p>                                    |    | <ul style="list-style-type: none"> <li>• 270° rotation</li> <li>• One-way Torque</li> <li>• 3 torque values</li> <li>• Range 4.0 to 8.0 N-m</li> <li>• Black nylon housing</li> <li>• 20,000 cycle life</li> </ul> <p><a href="#">Additional Product Info</a></p>  |
| PHC   |   | PHCA   |  |
|   | <ul style="list-style-type: none"> <li>• 270° rotation</li> <li>• 8 torque values</li> <li>• Range 0.0 to 2.79 N-m</li> <li>• Zinc housing</li> <li>• Finish: plain or black</li> <li>• Standard or countersunk mounting holes</li> <li>• 50,000 cycle life</li> </ul> <p><a href="#">Additional Product Info</a></p> |   | <ul style="list-style-type: none"> <li>• 270° rotation</li> <li>• 7 torque values</li> <li>• Range 0.44 to 2.79 N-m</li> <li>• Aluminum housing</li> <li>• Standard mounting holes</li> <li>• 50,000 cycle life</li> </ul> <p><a href="#">Additional Product Info</a></p>  |
| PHCS  |   | PH35   |  |
|  | <ul style="list-style-type: none"> <li>• 270° rotation</li> <li>• 7 torque values</li> <li>• Range 0.44 to 2.79 N-m</li> <li>• Stainless steel housing</li> <li>• Std or counter sunk mounting</li> <li>• 50,000 cycle life</li> </ul> <p><a href="#">Additional Product Info</a></p>                                 |  | <ul style="list-style-type: none"> <li>• High Torque</li> <li>• One-way Torque</li> <li>• 6 torque values</li> <li>• Range: 5.65 to 11.3 N-m</li> <li>• Zinc housing</li> <li>• 20,000 cycle life</li> </ul> <p><a href="#">Additional Product Info</a></p>  |
| PHA 8mm   |   | RT Series  |  |
|  | <ul style="list-style-type: none"> <li>• 360° rotation</li> <li>• 5 torque values</li> <li>• Range 0.28 to 0.65 N-m</li> <li>• Zinc housing</li> <li>• Std mounting holes</li> <li>• 50,000 cycle life</li> </ul> <p><a href="#">Additional Product Info</a></p>  |  | <ul style="list-style-type: none"> <li>• 4 part families: RT50, RT70, RT100, RT120</li> <li>• 3 shaft end options: Flag, Straight, Exposed shaft</li> <li>• Dual-ended mounting option (RT-50, RT-70)</li> <li>• 14 torque values</li> <li>• Range: 0.11 to 5.65 N-m</li> <li>• Zinc or Black E-Coat Finish</li> <li>• 50,000 cycle life</li> </ul> <p><a href="#">Additional Product Info</a></p> |



# Standard Position Hinges & Torque Inserts

| PHB   |  | PHK  |   |
|---|--|--|---|
|    | <ul style="list-style-type: none"> <li>• 360° rotation</li> <li>• 7 torque values</li> <li>• Range 0.44 to 2.79 N-m</li> <li>• Zinc housing</li> <li>• Finish: plain or black</li> <li>• Std mounting holes</li> <li>• Left, right or dual ends</li> <li>• 50,000 cycle life</li> </ul> <p><a href="#">Additional Product Info</a></p>                               |    | <ul style="list-style-type: none"> <li>• 360° rotation</li> <li>• 5 torque values</li> <li>• Range 1.5 to 5.5 N-m</li> <li>• Zinc housing</li> <li>• 100% / 60% differential torque</li> <li>• 20,000 cycle life</li> </ul> <p><a href="#">Additional Product Info</a></p>  |
| TI-C5M  |  | TI-100 Series  |   |
|    | <ul style="list-style-type: none"> <li>• 360° rotation</li> <li>• 3 torque values</li> <li>• Range: 0.15 to 0.30 N-m</li> <li>• Designed for Press fit</li> <li>• Zinc Housing</li> <li>• 30,000 cycle life</li> <li>• Single fin design</li> </ul> <p><a href="#">Additional Product Info</a></p>   |    | <ul style="list-style-type: none"> <li>• 360° rotation</li> <li>• 5 package sizes</li> <li>• 24 torque values</li> <li>• Range: 0.2 to 6.0 N-m</li> <li>• Designed for press fit</li> <li>• Black nylon housing</li> <li>• 25,000 cycle life</li> <li>• Single or dual fin design</li> <li>• One-way Torque (TI150/160)</li> </ul> <p><a href="#">Additional Product Info</a></p>   |
| TI-200 Series   |  | TI-300 Series  |   |
|  | <ul style="list-style-type: none"> <li>• 360° rotation</li> <li>• 2 packages sizes</li> <li>• 12 torque values</li> <li>• Range: 1.5 to 8.0 N-m</li> <li>• 100% / 60% differential torque</li> <li>• Designed for over molding</li> <li>• 20,000 cycle life (TI-240)</li> <li>• 10,000 cycle life (TI-220)</li> </ul> <p><a href="#">Additional Product Info</a></p> |  | <ul style="list-style-type: none"> <li>• 360° rotation</li> <li>• 4 package sizes,</li> <li>• 4 shaft-end attachment opts.</li> <li>• 12 torque values</li> <li>• Symmetric or One-way torque</li> <li>• Range: 0.5 to 10.0 Nm</li> <li>• Designed for press fit</li> <li>• 50,000 cycle life (TI-320,330)</li> <li>• 25,000 cycle life (TI-340,360)</li> </ul> <p><a href="#">Additional Product Info</a></p>  |
| PHT   |  | PHL  |   |
|  | <ul style="list-style-type: none"> <li>• 360° rotation</li> <li>• One-way Torque</li> <li>• 3 torque values</li> <li>• Range 2.0 to 6.0 N-m</li> <li>• Zinc housing</li> <li>• 20,000 cycle life</li> </ul> <p><a href="#">Additional Product Info</a></p>   |  | <ul style="list-style-type: none"> <li>• 270° rotation</li> <li>• 6 torque values</li> <li>• Range 0.9 to 3.4 N-m</li> <li>• Zinc housing</li> <li>• Finish: plain or black</li> <li>• Standard mounting holes</li> <li>• 20,000 cycle life</li> </ul> <p><a href="#">Additional Product Info</a></p>   |
| vTilt VESA Monitor Mount  |  | SJ Series Spherical Joint  |   |
|  | <ul style="list-style-type: none"> <li>• VESA std mounting pattern</li> <li>• Differential or One-way torque to provide easy lift</li> <li>• Torques from 3.0 to 8.0 N-m</li> <li>• Black nylon housing</li> <li>• 20,000 cycle life</li> </ul> <p><a href="#">Additional Product Info</a></p>   |  | <ul style="list-style-type: none"> <li>• 3 size. With torques from 0.2 to 8.0 N-m</li> <li>• 60° up/down &amp; left/right motion</li> <li>• Full 360° rotational adjustment</li> <li>• 50,000 adjustments life</li> <li>• Black nylon housing</li> <li>• SJ300 available with: <ul style="list-style-type: none"> <li>• Optional AMPS mount adapter</li> <li>• Hidden Mounting option</li> </ul> </li> </ul> <p><a href="#">Additional Product Info</a></p> |



## Standard Position Hinges & Torque Inserts

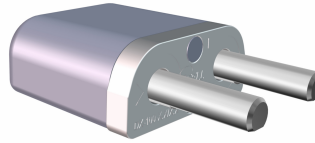
### MH13



- Weight 24 grams
- 270° rotation
- 3 torque values
- Range 1.0 to 3.0 N-m
- Black nylon housing
- 25,000 cycle life

[Additional Product Info](#)

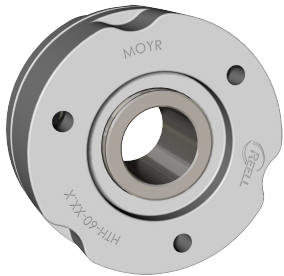
### DX100– Multi-Axis Hinge



- Unique design allows full fold-over of panels is thin as 8mm.
- Torque Range 0.3 to 1.5 N-m
- Equal and mixed torque profiles
- 50,000 cycle life

[Additional Product Info](#)

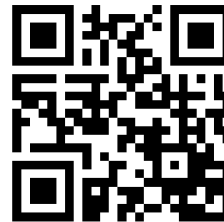
### HTH60



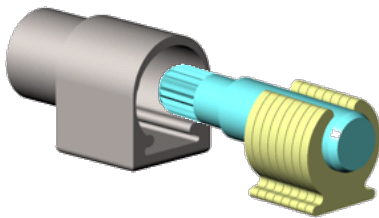
- Hollow axis design allows cable pass-through
- Torques: 5.5 to 11.5
- 25,000 cycle life

[Additional Product Info](#)

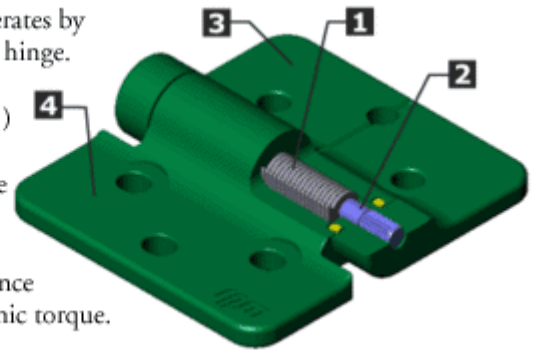
Visit [reell.com](http://reell.com) for more information



## How A Reell Friction Hinge Works



The patented Reell friction hinge operates by providing torque along the axis of the hinge. In the hinge pictured at right, this is achieved by using a series of "clips" (1) that are pressed on to a shaft (2). The end of the shaft is attached to one side of the hinge (3), while the other side (4) is attached to the foot of the clips. When rotated, the clip/shaft interference provides a consistent static and dynamic torque.



# Torque Range Chart

## Torque Range Chart

