

CATALOG CODE DX-100-X.X/X.X


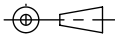
TORQUE Nm (AXIS A/AXIS B)	
	0.5/0.5
	1.0/1.0
	1.5/1.5
	0.5/1.5
	1.5/0.5

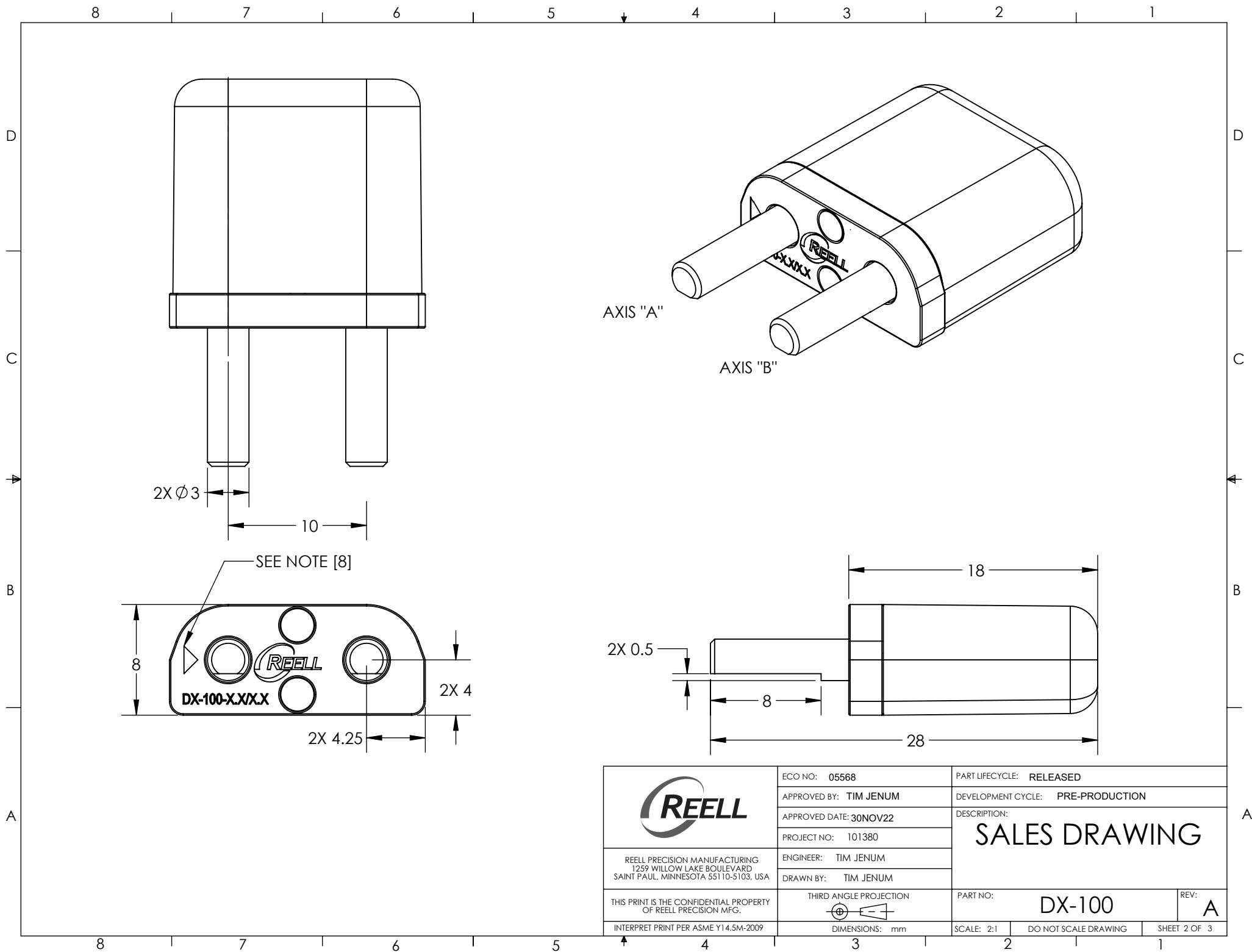
NOTES:


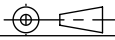
1. USER MUST DETERMINE FITNESS FOR USE IN APPLICATION.
2. ENVIRONMENTAL CONDITIONS: -20°C to 80°C.
3. PRODUCT TORQUE SPECIFICATION: DYNAMIC TORQUE $\pm 20\%$ OF NOMINAL
4. LIFE: 50,000 CYCLES.
ONE CYCLE CONSISTS OF 90° CW AND 90° CCW AT 10% DUTY CYCLE FOR SPEEDS LESS THAN 100 RPM.
5. FINISH:
NON-COSMETIC.
6. CUSTOMER IS RESPONSIBLE FOR CHECKING COMPATIBILITY OF REELL LUBRICANTS WITH PLASTICS USED.
7. MATERIALS:
BRACKET = ZINC, PLATED
FRONT PLATE = STAINLESS STEEL
SHAFT = STEEL
TORQUE ELEMENTS = STEEL
LUBRICATION = MINERAL BASED
- [8]. THE ARROW IS A DESIGNATOR OF WHICH AXIS IS THE HIGHER TORQUE IN AN ASSEMBLY THAT HAS A DIFFERENT TORQUE VALUE IN EACH AXIS. THE ARROW IS NOT PRESENT IN ASSEMBLIES THAT HAVE THE SAME TORQUE IN AXIS "A" AND "B"

FOR PATENTS SEE:
pat.reell.com (PRODUCT CODE: CP10)

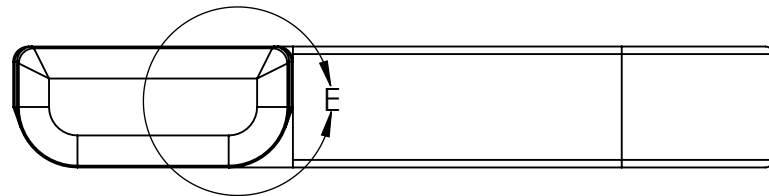
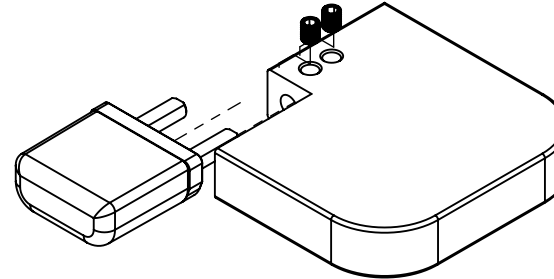
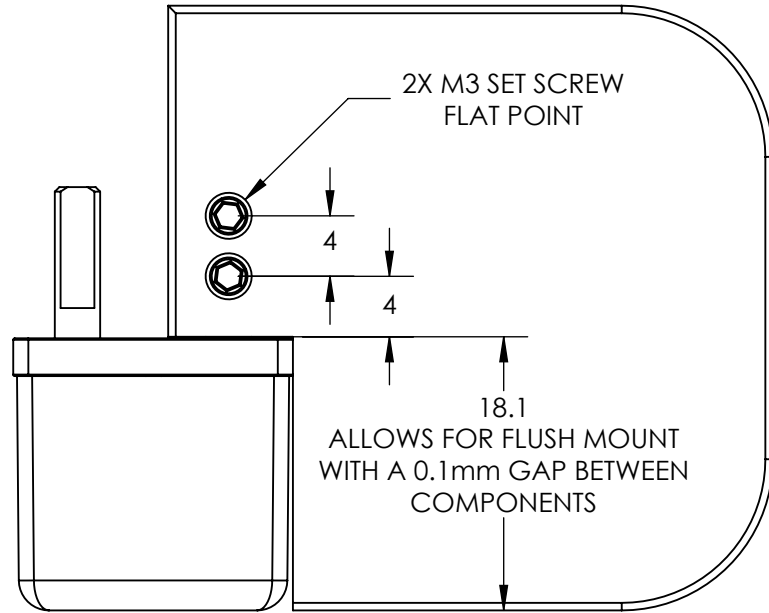
SPECIFICATIONS SUBJECT TO CHANGE

	ECO NO: 05568	PART LIFECYCLE: RELEASED			
	APPROVED BY: TIM JENUM	DEVELOPMENT CYCLE: PRE-PRODUCTION			
	APPROVED DATE: 30NOV22	<h2 style="text-align: center;">SALES DRAWING</h2>			
	PROJECT NO: 101380				
REELL PRECISION MANUFACTURING 1259 WILLOW LAKE BOULEVARD SAINT PAUL, MINNESOTA 55110-5103, USA	ENGINEER: TIM JENUM	<table border="1" style="width: 100%;"> <tr> <td style="width: 60%;">PART NO: DX-100</td> <td style="width: 40%;">REV: A</td> </tr> </table>		PART NO: DX-100	REV: A
PART NO: DX-100	REV: A				
THIS PRINT IS THE CONFIDENTIAL PROPERTY OF REELL PRECISION MFG.	THIRD ANGLE PROJECTION 				
INTERPRET PRINT PER ASME Y14.5M-2009	DIMENSIONS: mm	SCALE: 2:1	DO NOT SCALE DRAWING	SHEET 1 OF 3	

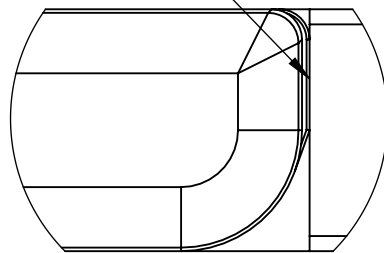


	ECO NO: 05568	PART LIFECYCLE: RELEASED	
	APPROVED BY: TIM JENUM	DEVELOPMENT CYCLE: PRE-PRODUCTION	
	APPROVED DATE: 30NOV22	DESCRIPTION:	
	PROJECT NO: 101380	SALES DRAWING	
REELL PRECISION MANUFACTURING 1259 WILLOW LAKE BOULEVARD SAINT PAUL, MINNESOTA 55110-5103, USA	ENGINEER: TIM JENUM	PART NO: DX-100	
	DRAWN BY: TIM JENUM		
THIS PRINT IS THE CONFIDENTIAL PROPERTY OF REELL PRECISION MFG.	THIRD ANGLE PROJECTION 	SCALE: 2:1	DO NOT SCALE DRAWING
INTERPRET PRINT PER ASME Y14.5M-2009	DIMENSIONS: mm	SHEET 2 OF 3	

MOUNTING RECOMMENDATIONS

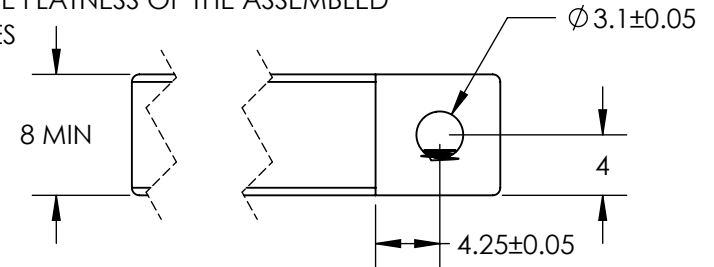


CONTACT RELATIONSHIP BETWEEN THE HINGE AND THE PLATE. THIS PROVIDES THE STOP TO THE TRAVEL OF THE PLATE AND SETS THE ANGLE. TOLERANCE VARIATION MAY AFFECT ANGLE



DETAIL E
SCALE 4 : 1

POSITION OF CENTERLINE OF THE HOLE TO INDICATED SURFACE IS IMPORTANT TO THE FLATNESS OF THE ASSEMBLED PLATES



	ECO NO: 05568	PART LIFECYCLE: RELEASED	
	APPROVED BY: TIM JENUM	DEVELOPMENT CYCLE: PRE-PRODUCTION	
	APPROVED DATE: 30NOV22	DESCRIPTION:	
	PROJECT NO: 101380	SALES DRAWING	
REELL PRECISION MANUFACTURING 1259 WILLOW LAKE BOULEVARD SAINT PAUL, MINNESOTA 55110-5103, USA	ENGINEER: TIM JENUM		
	DRAWN BY: TIM JENUM		
THIS PRINT IS THE CONFIDENTIAL PROPERTY OF REELL PRECISION MFG.	THIRD ANGLE PROJECTION	PART NO: DX-100	REV: A
		SCALE: 2:1	DO NOT SCALE DRAWING
INTERPRET PRINT PER ASME Y14.5M-2009	DIMENSIONS: mm	SHEET 3 OF 3	