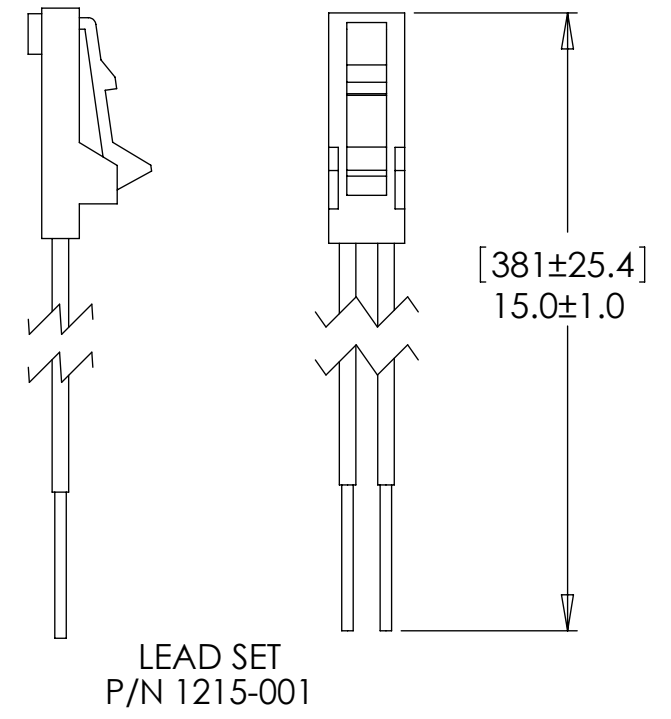
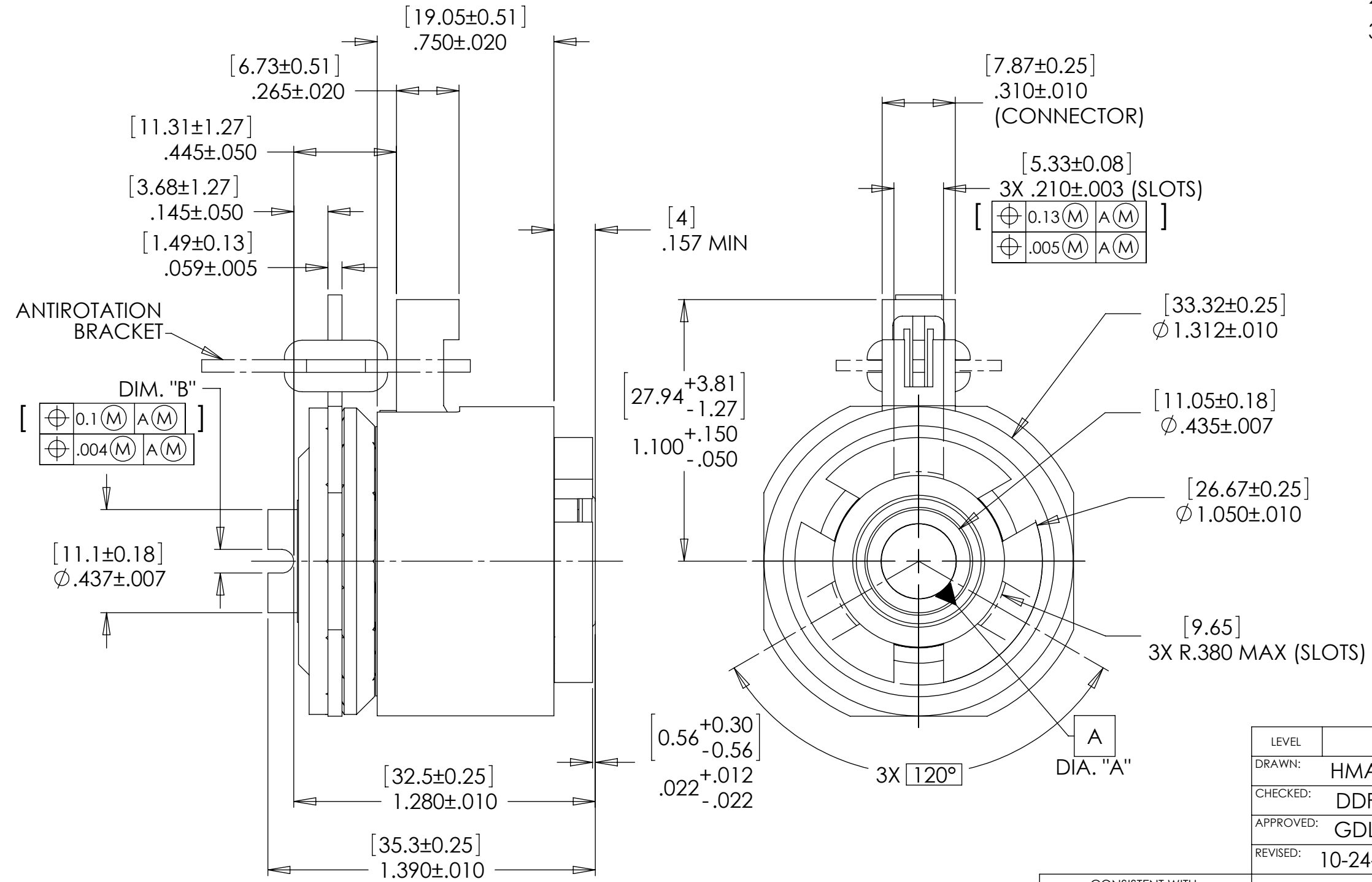


REELL RADIAL ELECTRIC CLUTCH BRAKE

SHAFT NOM.	DIA. "A"	DIM. "B"	CROSS PIN SIZE	ONE MILLION CYCLE TORQUE RATING: [2.3 Nm] 20 Lb-in TOTAL LOAD. 8mm BORE SHOWN CROSS PIN SHAFT THREE DOG DRIVE HUB MOLDED COIL CONNECTOR	BRAKE TORQUE: [0.057 Nm] 8 Oz-in MIN [0.247 Nm] 35 Oz-in MAX WHEN CLUTCH IS DISENGAGED
1/4 6mm 8mm & 5/16	.2505/.2530 [6.01/6.09]	.099/.108 [2.53/2.75]	3/32 [2.5]		
	[8.01/8.09] & .3153/.3185	[2.53/2.75] & .099/.108	[2.5] & 3/32		

NOTES:

- CONNECTOR PINS ARE [0.64 x 0.64] .025 x .025 SQUARE. THE FOLLOWING MATING CONNECTORS CAN BE USED.
TERMINAL: POLARIZED LATCHING CONNECTOR, INSULATION DISPLACEMENT CONTACTS AMP NO. 5-103956-1
ALTERNATE TERMINAL: MOLEX NO. 14-60-0022
- COIL RESISTANCE - 44 OHMS ± 10%
- PICK VOLTAGE OF 24 VOLTS REQUIRED FOR 50mSEC. HOLD AT 12 VOLTS. 12 VOLT HOLD IS NOT REQUIRED IF THE DUTY CYCLE IS LESS THAN 25% AND THE ON TIME IS LESS THAN 2 MINUTES.



SPECIFICATIONS SUBJECT TO CHANGE

CONSISTENT WITH ASME Y14.5M-1994
THIS PRINT IS THE CONFIDENTIAL PROPERTY OF REELL PRECISION MFG.
THIRD ANGLE PROJECTION

LEVEL	DESCRIPTION	DRAWN	DATE	APPROVED
DRAWN: HMA	DATE: 4-25-91	PART NO: 83-XXX		
CHECKED: DDF	DATE: 5-11-95	TITLE: LONG LIFE CLUTCH/BRAKE ASSEMBLY		
APPROVED: GDL	DATE: 5-11-95	DESCRIPTION: EC20 C/B LL		
REVISED: 10-24-16	DIMS: [mm]IN	REV: J		
REELL PRECISION MANUFACTURING 1259 WILLOW LAKE BOULEVARD SAINT PAUL, MINNESOTA 55110-5103, USA		SCALE: 2:1	DO NOT SCALE DRAWING	SHEET 1 OF 1

