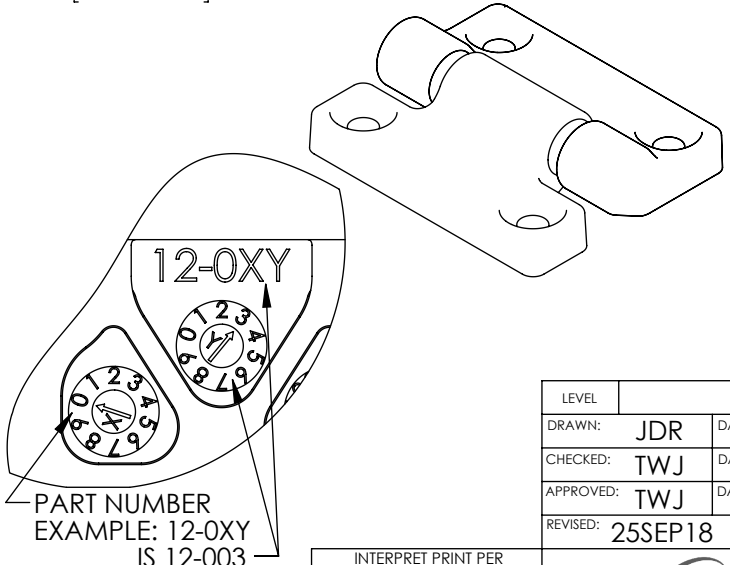
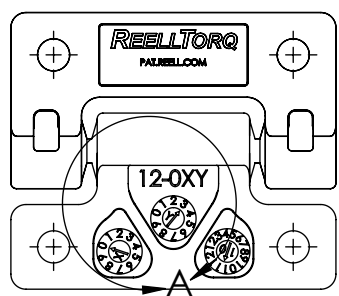
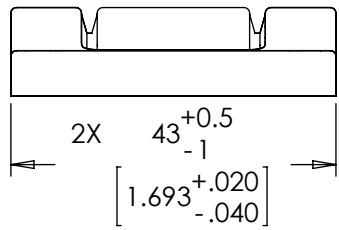


PART NUMBER	COLOR	DYNAMIC TORQUE		
		NOMINAL	TOLERANCE	
12-000	BLACK	0.4	[3.5]	35
12-001	BLACK	0.8	[7.0]	25
12-002	BLACK	1.2	[10.6]	20
12-003	BLACK	1.6	[14.2]	20

- NOTES:
1. USER MUST DETERMINE FITNESS FOR USE IN APPLICATION.
  2. LIFE: 25,000 CYCLES.  
ONE CYCLE = 180° OPEN/180° CLOSED.  
FIVE(5) CYCLES PER MINUTE MAX.
  3. MATERIAL:  
BRACKET AND SHAFT END ARE ENGINEERED PLASTIC  
SHAFT AND TORQUE ELEMENT ARE HARDENED STEEL
  - 4] DESIGNED TO ACCEPT M4 OR #8 BUTTON HEAD SCREW OR EQUIVALENT.
  - 5] BRACKET TO BE ORIENTED ±5° WITH RESPECT TO DATUM A AS SHOWN.
  6. TOTAL TRAVEL 270°.
  7. STATIC TORQUE IS NORMALLY WITHIN 10% OF DYNAMIC TORQUE.



PART NUMBER  
EXAMPLE: 12-0XY  
IS 12-003

DETAIL A  
SCALE 2:1

INTERPRET PRINT PER ASME Y14.5M-1994  
THIS PRINT IS THE CONFIDENTIAL PROPERTY OF REELL PRECISION MFG.  
THIRD ANGLE PROJECTION

LEVEL	DESCRIPTION	DRAWN	DATE	APPROVED
DRAWN:	JDR	DATE:	26FEB09	REFERENCE:
CHECKED:	TWJ	DATE:	27MAR09	12-XXX
APPROVED:	TWJ	DATE:	27MAR09	TITLE:
REVISED:	25SEP18	DIMS:	mm[IN]	MOLDED HINGE ASSEMBLY
REELL PRECISION MANUFACTURING 1259 WILLOW LAKE BOULEVARD SAINT PAUL, MINNESOTA 55110-5103, USA				PART NO:
REELL				MH12 SERIES
SCALE: 1:1				REV: K
DO NOT SCALE DRAWING				SHEET 1 OF 1

SPECIFICATION SUBJECT TO CHANGE