

NOTES:

1. DYNAMIC TORQUE AND PART NUMBERS SEE PAGE 2.
2. LIFE: 20,000 CYCLES WHEN DUTY CYCLE IS LESS THAN 10% AND ROTATIONAL SPEED IS LESS THAN 100 RPM. 10 SECONDS MAXIMUM CONTINUOUS ACTUATION.
3. USER MUST DETERMINE FITNESS FOR USE IN APPLICATION.
4. DESIGNED TO ACCEPT 1/4" OR M6 SCREW OR EQUIVALENT.
- [5] HINGE MARKED WITH TORQUE (LB-IN), DIRECTION AND DDMMYY.
EXAMPLE: 050 F 260712
- [6] HIGH TORQUE DIRECTION DETERMINED WITH CENTER BRACKET FIXED AND END BRACKETS ROTATED AS SHOWN.
7. MATERIAL SUMMARY:
BRACKETS: ZINC DIECAST
SHAFT: HARDENED STEEL
TORQUE ELEMENT: HARDENED STEEL
BEARINGS: HARDENED STEEL
8. MAX HINGE ROTATION: 270°.
9. SHIP ANGLE 0° ± 5° BETWEEN BRACKETS.

PH - 35 - XXX - X - XX

TORQUE LB-IN
- 050
- 060
- 070
- 080
- 090
- 100

TYPE
F - ONE WAY FORWARD
R - ONE WAY REVERSE

COLOR
02 - BLACK

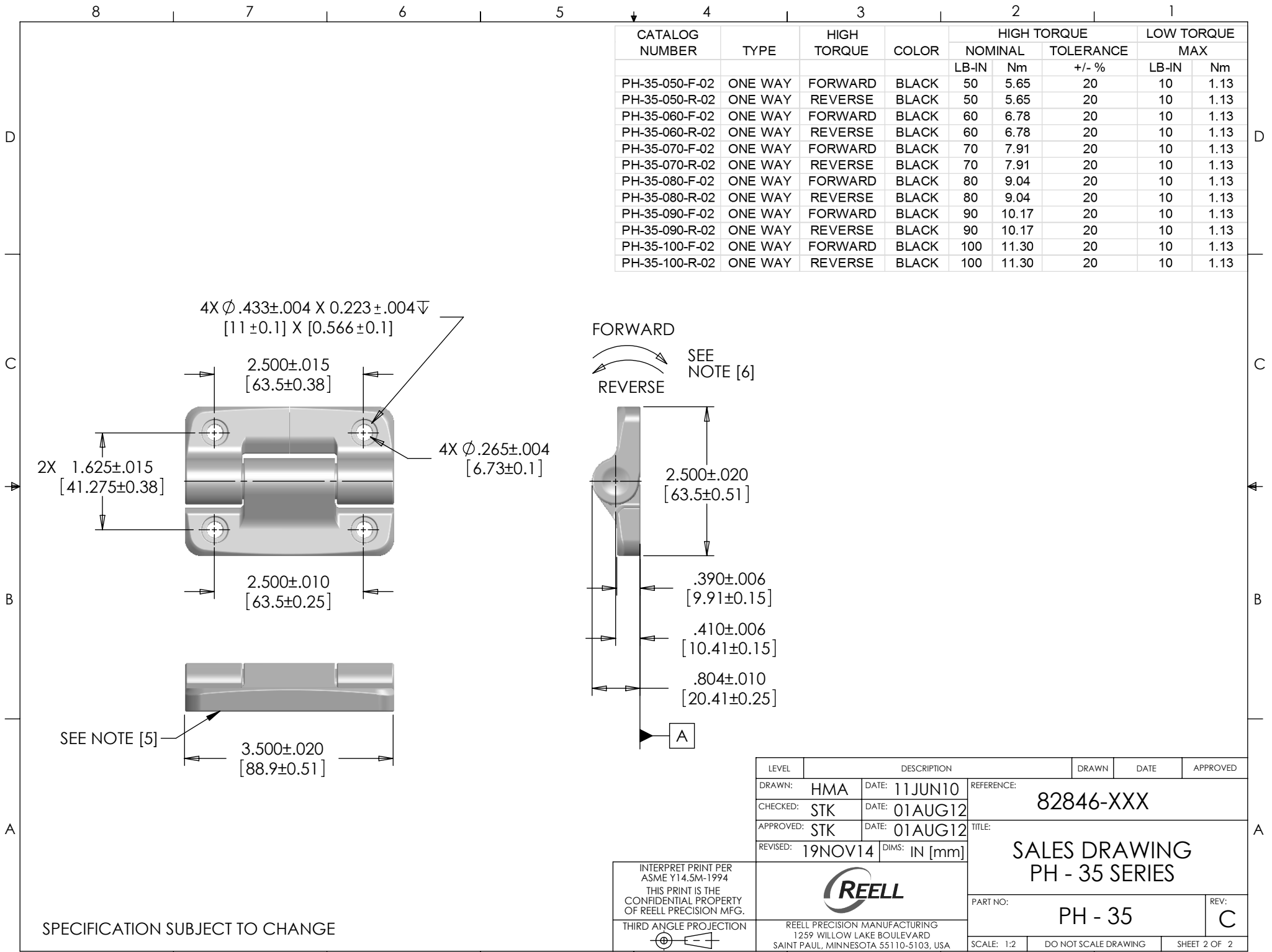
SPECIFICATION SUBJECT TO CHANGE

INTERPRET PRINT PER
ASME Y14.5M-1994
THIS PRINT IS THE
CONFIDENTIAL PROPERTY
OF REELL PRECISION MFG.

THIRD ANGLE PROJECTION

LEVEL	DESCRIPTION	DRAWN	DATE	APPROVED
DRAWN: HMA	DATE: 11JUN10	REFERENCE: 82846-XXX		
CHECKED: STK	DATE: 01AUG12	TITLE: SALES DRAWING PH - 35 SERIES		
APPROVED: STK	DATE: 01AUG12	PART NO: PH - 35		
REVISED: 19NOV14	DIMS: IN [mm]	REV: C		
REELL PRECISION MANUFACTURING 1259 WILLOW LAKE BOULEVARD SAINT PAUL, MINNESOTA 55110-5103, USA		SCALE: 1:2	DO NOT SCALE DRAWING	SHEET 1 OF 2

CATALOG NUMBER	TYPE	HIGH TORQUE	COLOR	HIGH TORQUE			LOW TORQUE	
				NOMINAL		TOLERANCE	MAX	
				LB-IN	Nm	+/- %	LB-IN	Nm
PH-35-050-F-02	ONE WAY	FORWARD	BLACK	50	5.65	20	10	1.13
PH-35-050-R-02	ONE WAY	REVERSE	BLACK	50	5.65	20	10	1.13
PH-35-060-F-02	ONE WAY	FORWARD	BLACK	60	6.78	20	10	1.13
PH-35-060-R-02	ONE WAY	REVERSE	BLACK	60	6.78	20	10	1.13
PH-35-070-F-02	ONE WAY	FORWARD	BLACK	70	7.91	20	10	1.13
PH-35-070-R-02	ONE WAY	REVERSE	BLACK	70	7.91	20	10	1.13
PH-35-080-F-02	ONE WAY	FORWARD	BLACK	80	9.04	20	10	1.13
PH-35-080-R-02	ONE WAY	REVERSE	BLACK	80	9.04	20	10	1.13
PH-35-090-F-02	ONE WAY	FORWARD	BLACK	90	10.17	20	10	1.13
PH-35-090-R-02	ONE WAY	REVERSE	BLACK	90	10.17	20	10	1.13
PH-35-100-F-02	ONE WAY	FORWARD	BLACK	100	11.30	20	10	1.13
PH-35-100-R-02	ONE WAY	REVERSE	BLACK	100	11.30	20	10	1.13



SPECIFICATION SUBJECT TO CHANGE

LEVEL	DESCRIPTION		DRAWN	DATE	APPROVED
DRAWN:	HMA	DATE: 11 JUN 10	REFERENCE: 82846-XXX		
CHECKED:	STK	DATE: 01 AUG 12	TITLE: SALES DRAWING PH - 35 SERIES		
APPROVED:	STK	DATE: 01 AUG 12	PART NO: PH - 35		
REVISED:	19 NOV 14	DIMS: IN [mm]	REV: C		
INTERPRET PRINT PER ASME Y14.5M-1994 THIS PRINT IS THE CONFIDENTIAL PROPERTY OF REELL PRECISION MFG. THIRD ANGLE PROJECTION				REELL PRECISION MANUFACTURING 1259 WILLOW LAKE BOULEVARD SAINT PAUL, MINNESOTA 55110-5103, USA	
SCALE: 1:2		DO NOT SCALE DRAWING		SHEET 2 OF 2	