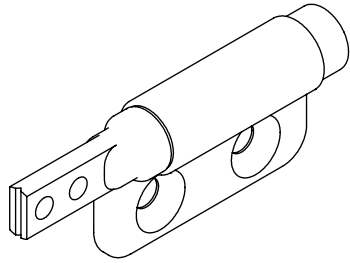
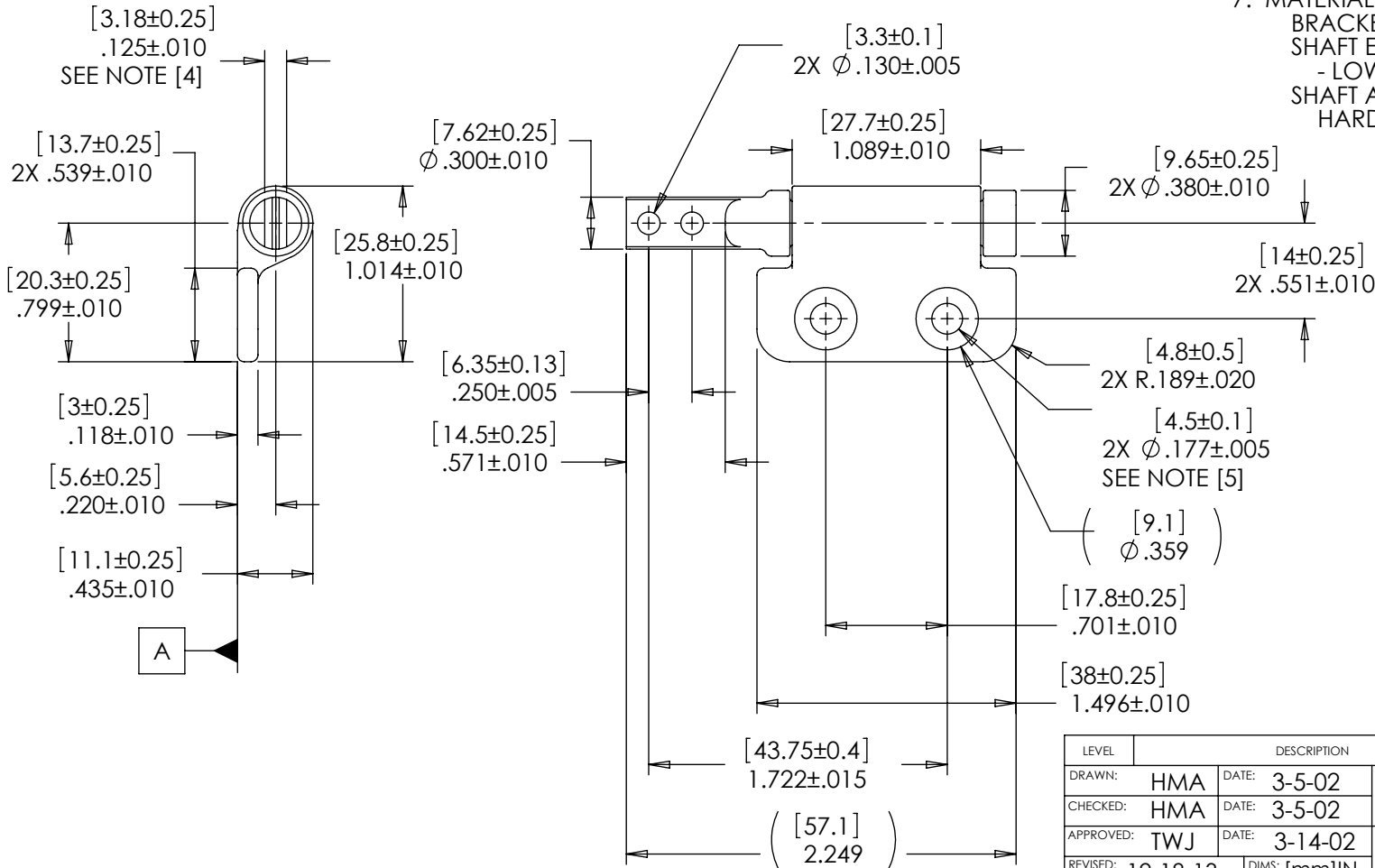


NOTES: 1.



TORQUE	PLAIN	BLACK
[INCHES] mm	PART NO.	PART NO.
[3.9] Lb-in 0.44 Nm	26-054	26-154
[6.9] Lb-in 0.78 Nm	26-058	26-158
[10.8] Lb-in 1.22 Nm	26-062	26-162
[13.9] Lb-in 1.57 Nm	26-066	26-166
[17.8] Lb-in 2.01 Nm	26-070	26-170
[20.8] Lb-in 2.35 Nm	26-074	26-174
[24.7] Lb-in 2.79 Nm	26-080	26-180

2. TORQUE TOLERANCE: $\pm 20\%$
3. LIFE: 50,000 CYCLES WHEN DUTY CYCLE IS LESS THAN 10% AND ROTATIONAL SPEED IS LESS THAN 100 RPM. 30 SECONDS MAXIMUM CONTINUOUS ACTUATION.
- [4] FLATS TO BE ORIENTED $\pm 5^\circ$ WITH RESPECT TO DATUM A AS SHOWN.
- [5] DESIGNED TO ACCEPT M4 OR #8 SCREW OR EQUIVALENT
6. USER MUST DETERMINE FITNESS FOR USE IN APPLICATION
7. MATERIAL:
 BRACKET IS ZINC
 SHAFT ENDS ARE PLATED STEEL
 - LOW CARBON STEEL WITH ZINC PLATE
 SHAFT AND TORQUE ELEMENT ARE
 HARDENED STEEL



LEVEL	DESCRIPTION	DRAWN	DATE	APPROVED
DRAWN:	HMA	DATE:	3-5-02	PART NO: 26-XXX
CHECKED:	HMA	DATE:	3-5-02	
APPROVED:	TWJ	DATE:	3-14-02	
REVISED:	12-18-13	DIMS:	[mm]IN	
TITLE:		DESCRIPTION: PHB SERIES WITH COUNTERSINKS		
TITLE:		POSITIONING HINGE, LEFT		
SCALE: 1:1		DO NOT SCALE DRAWING		REV: H
SHEET 1 OF 1				

INTERPRET PRINT PER ASME Y14.5M-1994
 THIS PRINT IS THE CONFIDENTIAL PROPERTY OF REELL PRECISION MFG.
 THIRD ANGLE PROJECTION



REELL PRECISION MANUFACTURING
 1259 WILLOW LAKE BOULEVARD
 SAINT PAUL, MINNESOTA 55110-5103, USA

SPECIFICATIONS SUBJECT TO CHANGE