

# CATALOG CODE

## RT - 070 - XX - XX

TORQUE IN-LBS
03
04
05
06
08

SHAFT END TYPE
04- DUAL FLAG
05- DUAL STRAIGHT
06- DUAL KNURLED SHAFT END


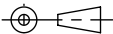
DYNAMIC TORQUE	
NOMINAL TORQUE (IN-LBS)	TOLERANCE
03	±20%
04	±20%
05	±20%
06	±20%
07	±20%
08	±20%

PRODUCT TORQUE SPECIFICATION AT +20°C

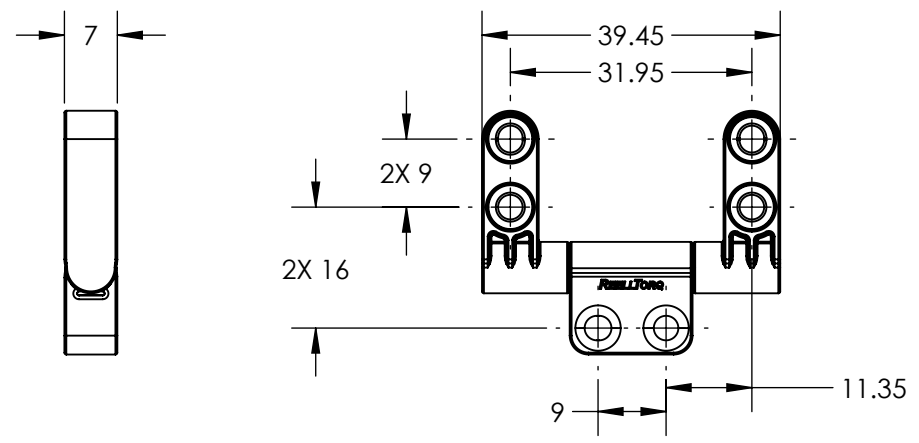
### NOTES:

- APPLICATION CONDITIONS REFERENCE (USER MUST DETERMINE FITNESS FOR USE IN APPLICATION).
- ENVIRONMENTAL CONDITIONS: -20° TO +80°C. UP TO 10% OF LIFE CYCLES AT HOT AND COLD CONDITIONS.
- LIFE: 50,000 CYCLES. ONE CYCLE CONSISTS OF 90° CW AND 90° CCW AT 10% DUTY CYCLE FOR SPEEDS LESS THAN 100RPM.
- MATERIALS:  
ZINC DIE CAST HOUSINGS & FLAG SHAFT ENDS  
STEEL STRAIGHT SHAFT ENDS  
HARDENED STEEL SHAFT  
HARDENED STEEL TORQUE CLIPS  
MINERAL OIL BASED LUBRICANT
- FINISH:  
NON-COSMETIC PLAIN.  
CLEAR CHROMATE RUST PREVENTATIVE COATING ON THE STRAIGHT SHAFT.
- SHIP ANGLE 0° ± 5° BETWEEN HOUSINGS.
- SEE PAGE 5 FOR RECOMMENDED MATING HOLE GEOMETRY FOR KNURLED SHAFT END.
- DESIGNED TO ACCEPT M3, #4 OR #5 SCREW FOR RT-070 (USE LOW HEAD VERSION IF HEAD MUST BE SUBFLUSH.)

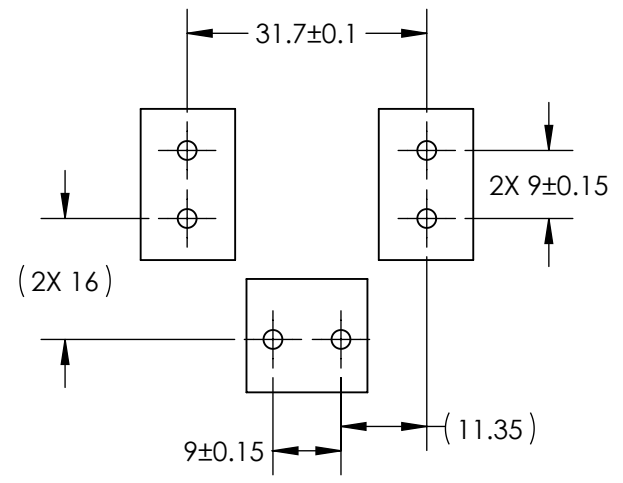
SPECIFICATION SUBJECT TO CHANGE

	ECO NO: 04436	PART LIFECYCLE: RELEASED	
	APPROVED BY: MICHAEL BEALE	DEVELOPMENT CYCLE: PRODUCTION	
	APPROVED DATE: 30NOV21	DESCRIPTION:	
	PROJECT NO: 101270	<h1>SALES DRAWING</h1>	
ENGINEER: MICHAEL BEALE			
REELL PRECISION MANUFACTURING 1259 WILLOW LAKE BOULEVARD SAINT PAUL, MINNESOTA 55110-5103, USA	DRAWN BY:	PART NO: RT-070 DUAL	
THIS PRINT IS THE CONFIDENTIAL PROPERTY OF REELL PRECISION MFG.	THIRD ANGLE PROJECTION 	SCALE: 2:1	REV: B
INTERPRET PRINT PER ASME Y14.5M-2009	DIMENSIONS: mm	DO NOT SCALE DRAWING	SHEET 1 OF 5


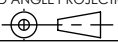
# RT - 070 - XX - 04



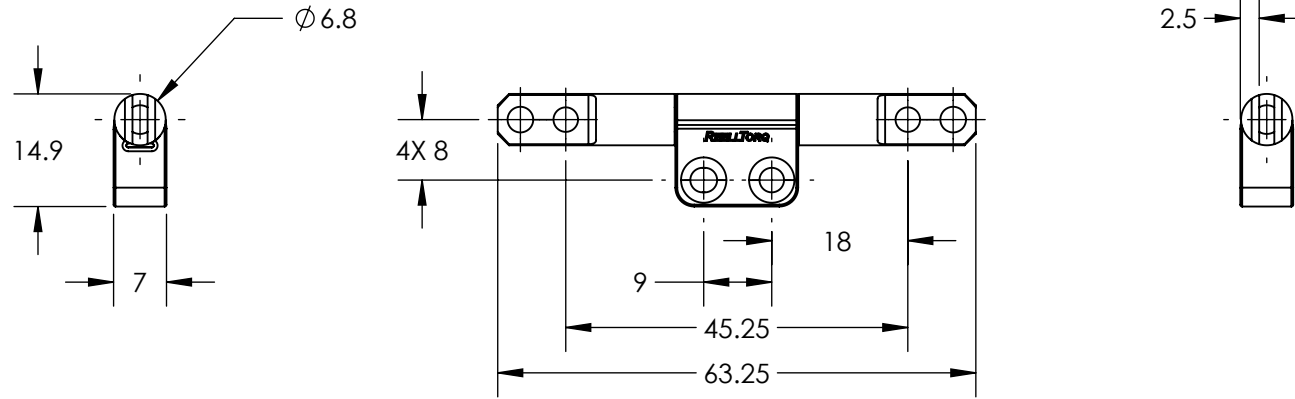
## MOUNTING CONFIGURATION



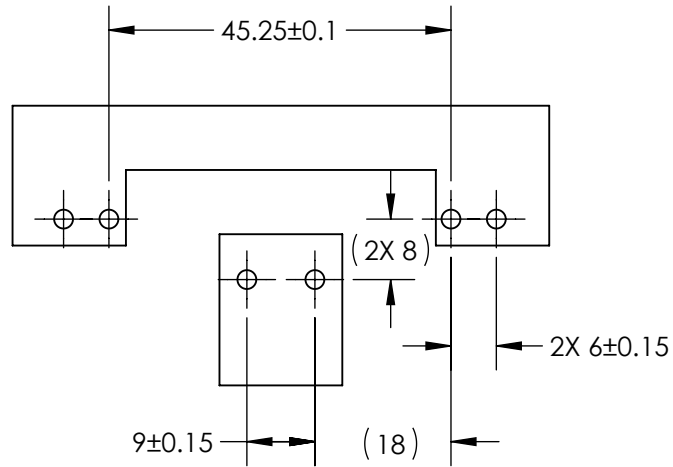
SPECIFICATION SUBJECT TO CHANGE

	ECO NO: 04436	PART LIFECYCLE: RELEASED	
	APPROVED BY: MICHAEL BEALE	DEVELOPMENT CYCLE: PRODUCTION	
	APPROVED DATE: 30NOV21	DESCRIPTION:	
	PROJECT NO: 101270	<b>SALES DRAWING</b>	
REELL PRECISION MANUFACTURING 1259 WILLOW LAKE BOULEVARD SAINT PAUL, MINNESOTA 55110-5103, USA	ENGINEER: MICHAEL BEALE	<b>RT-070 DUAL</b>	
THIS PRINT IS THE CONFIDENTIAL PROPERTY OF REELL PRECISION MFG.	DRAWN BY:		
INTERPRET PRINT PER ASME Y14.5M-2009	THIRD ANGLE PROJECTION 	SCALE: 1:1	DO NOT SCALE DRAWING

# RT - 070 - XX - 05



## MOUNTING CONFIGURATION



REELL PRECISION MANUFACTURING  
1259 WILLOW LAKE BOULEVARD  
SAINT PAUL, MINNESOTA 55110-5103, USA

THIS PRINT IS THE CONFIDENTIAL PROPERTY  
OF REELL PRECISION MFG.

INTERPRET PRINT PER ASME Y14.5M-2009

ECO NO: 04436

APPROVED BY: MICHAEL BEALE

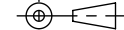
APPROVED DATE: 30NOV21

PROJECT NO: 101270

ENGINEER: MICHAEL BEALE

DRAWN BY:

THIRD ANGLE PROJECTION



DIMENSIONS: mm

PART LIFECYCLE: RELEASED

DEVELOPMENT CYCLE: PRODUCTION

DESCRIPTION:

# SALES DRAWING

PART NO: RT-070 DUAL

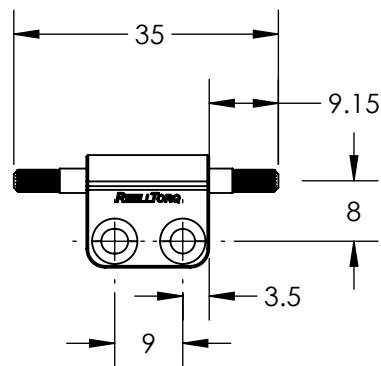
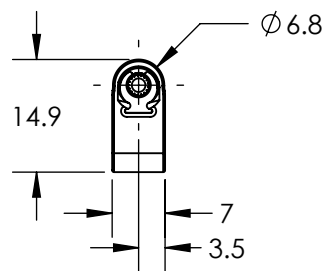
REV: B

SCALE: 1:1 DO NOT SCALE DRAWING


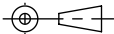
SHEET 3 OF 5

SPECIFICATION SUBJECT TO CHANGE

# RT - 070 - XX - 06



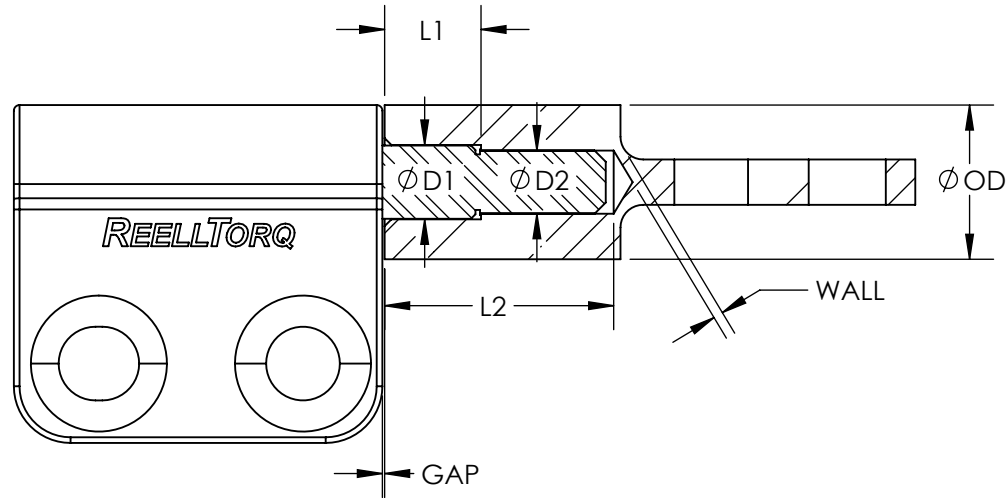
SPECIFICATION SUBJECT TO CHANGE

	ECO NO: 04436	PART LIFECYCLE: RELEASED	
	APPROVED BY: MICHAEL BEALE	DEVELOPMENT CYCLE: PRODUCTION	
	APPROVED DATE: 30NOV21	DESCRIPTION:	
	PROJECT NO: 101270	<h2 style="text-align: center;">SALES DRAWING</h2>	
ENGINEER: MICHAEL BEALE	PART NO: <b>RT-070 DUAL</b>		
REELL PRECISION MANUFACTURING 1259 WILLOW LAKE BOULEVARD SAINT PAUL, MINNESOTA 55110-5103, USA	DRAWN BY:	SCALE: 1:1    DO NOT SCALE DRAWING    SHEET 4 OF 5	
THIS PRINT IS THE CONFIDENTIAL PROPERTY OF REELL PRECISION MFG.	THIRD ANGLE PROJECTION 	DIMENSIONS: mm	
INTERPRET PRINT PER ASME Y14.5M-2009			

RT-070 DUAL

MATERIAL	**D1	**D2	L1	L2	OD	WALL	GAP
DIE CAST ZINC	3.18+/-0.03	2.7+/-0.03	4.25+/-0.15	10.1 MIN	6 MIN	1 MIN	0.1 NOMINAL
DIE CAST ALUMINUM							
MILD STEEL	3.28+/-0.05	2.785+/-0.015					
WROUGHT ALUMINUM							

\*\*PRESS-FIT DIMENSIONS FOR THE RT-070-XX-06 ARE DIFFERENT THAN THOSE FOR THE RT-070-XX-03.



REELL PRECISION MANUFACTURING  
1259 WILLOW LAKE BOULEVARD  
SAINT PAUL, MINNESOTA 55110-5103, USA

THIS PRINT IS THE CONFIDENTIAL PROPERTY  
OF REELL PRECISION MFG.

INTERPRET PRINT PER ASME Y14.5M-2009

ECO NO: 04436

APPROVED BY: MICHAEL BEALE

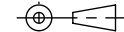
APPROVED DATE: 30NOV21

PROJECT NO: 101270

ENGINEER: MICHAEL BEALE

DRAWN BY:

THIRD ANGLE PROJECTION



DIMENSIONS: mm

PART LIFECYCLE: RELEASED

DEVELOPMENT CYCLE: PRODUCTION

DESCRIPTION:

**SALES DRAWING**

PART NO: RT-070 DUAL

REV: B

SCALE: 3:1 DO NOT SCALE DRAWING

SHEET 5 OF 5

SPECIFICATION SUBJECT TO CHANGE