

CATALOG CODE

RT - 070 - XX - XX

TORQUE IN-LBS

- 03
- 04
- 05
- 06
- 07
- 08


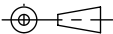
SHAFT END TYPE

- 01- FLAG
- 02- STRAIGHT
- 03- KNURLED SHAFT END
- 04- DUAL FLAG
- 05- DUAL STRAIGHT
- 06- DUAL KNURLED SHAFT END

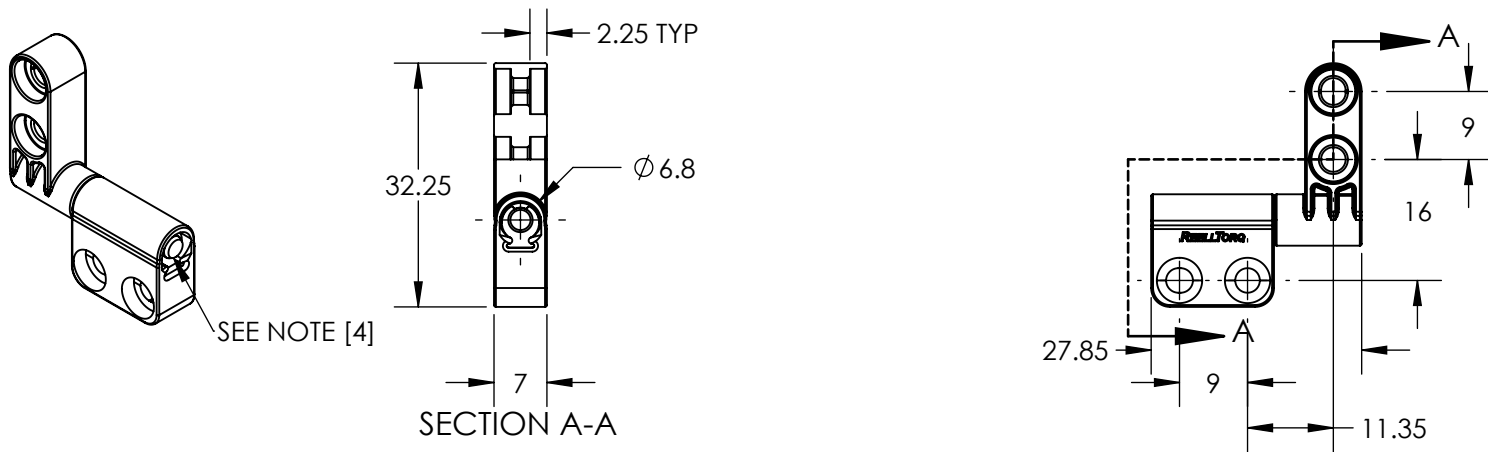
NOTES:

1. APPLICATION CONDITIONS REFERENCE (USER MUST DETERMINE FITNESS FOR USE IN APPLICATION).
2. ENVIRONMENTAL CONDITIONS: -20° TO +80°C. UP TO 10% OF LIFE CYCLES AT HOT AND COLD CONDITIONS.
3. LIFE: 50,000 CYCLES.
ONE CYCLE CONSISTS OF 90° CW AND 90° CCW AT 10% DUTY CYCLE FOR SPEEDS LESS THAN 100RPM.
- [4] HINGE DESIGNED TO SUPPORT A MINIMAL AXIAL FORCE IN DIRECTION SHOWN, NOT DESIGNED TO SUPPORT AXIAL FORCE IN THE OPPOSITE DIRECTION.
5. MATERIALS:
ZINC DIE CAST HOUSINGS & FLAG SHAFT ENDS
STEEL STRAIGHT SHAFT ENDS
HARDENED STEEL SHAFT
HARDENED STEEL TORQUE CLIPS
MINERAL OIL BASED LUBRICANT
6. FINISH:
NON-COSMETIC PLAIN.
CLEAR CHROMATE RUST PREVENTATIVE COATING ON THE STRAIGHT SHAFT.
7. SHIP ANGLE 0° ± 5° BETWEEN HOUSINGS.
8. SEE PAGE 8 FOR RECOMMENDED MATING HOLE GEOMETRY FOR KNURLED SHAFT END.
9. DESIGNED TO ACCEPT M3, #4 OR #5 SCREW FOR RT-070 (USE LOW HEAD VERSION IF HEAD MUST BE SUBFLUSH.)

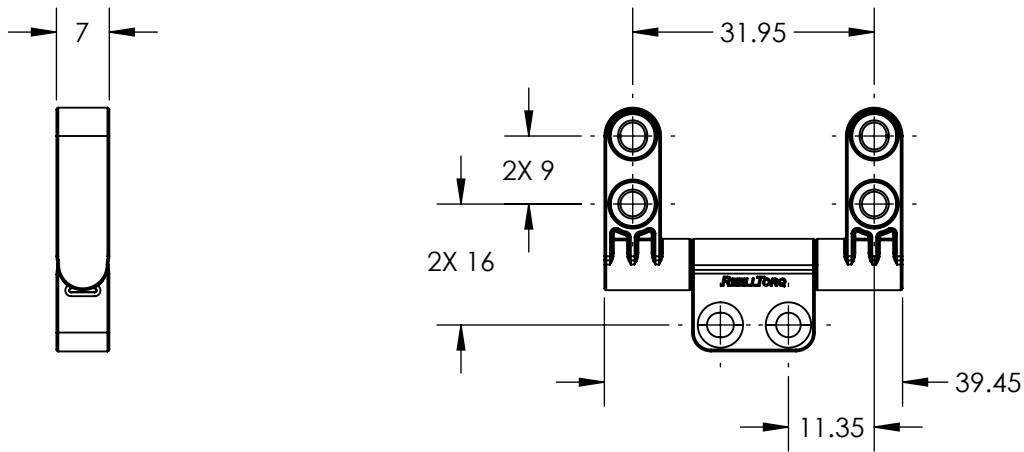
SPECIFICATION SUBJECT TO CHANGE

	ECO NO: 05315	PART LIFECYCLE: RELEASED	
	APPROVED BY: MICHAEL BEALE	DEVELOPMENT CYCLE: PRODUCTION	
	APPROVED DATE: 04AUG22	DESCRIPTION:	
	PROJECT NO: 101270	SALES DRAWING	
REELL PRECISION MANUFACTURING 1259 WILLOW LAKE BOULEVARD SAINT PAUL, MINNESOTA 55110-5103, USA	ENGINEER: MICHAEL BEALE	PART NO: RT-070	
THIS PRINT IS THE CONFIDENTIAL PROPERTY OF REELL PRECISION MFG.	DRAWN BY:		
INTERPRET PRINT PER ASME Y14.5M-2009	THIRD ANGLE PROJECTION 	SCALE: 2:1	DO NOT SCALE DRAWING
	DIMENSIONS: mm		SHEET 1 OF 7


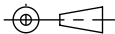
RT - 070 - XX - 01



RT - 070 - XX - 04

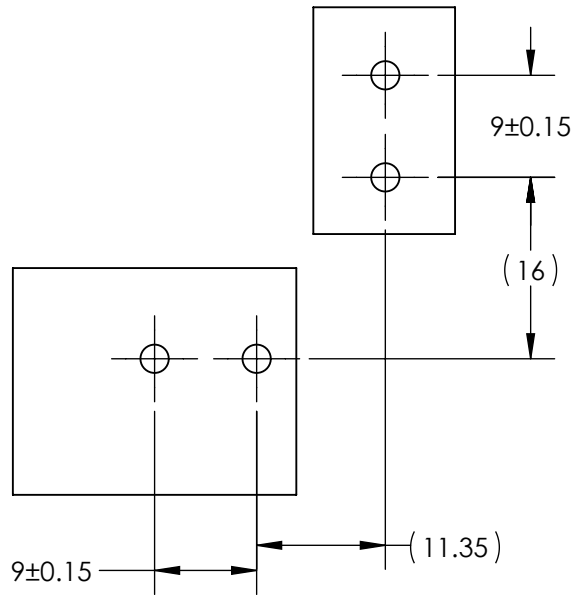


SPECIFICATION SUBJECT TO CHANGE

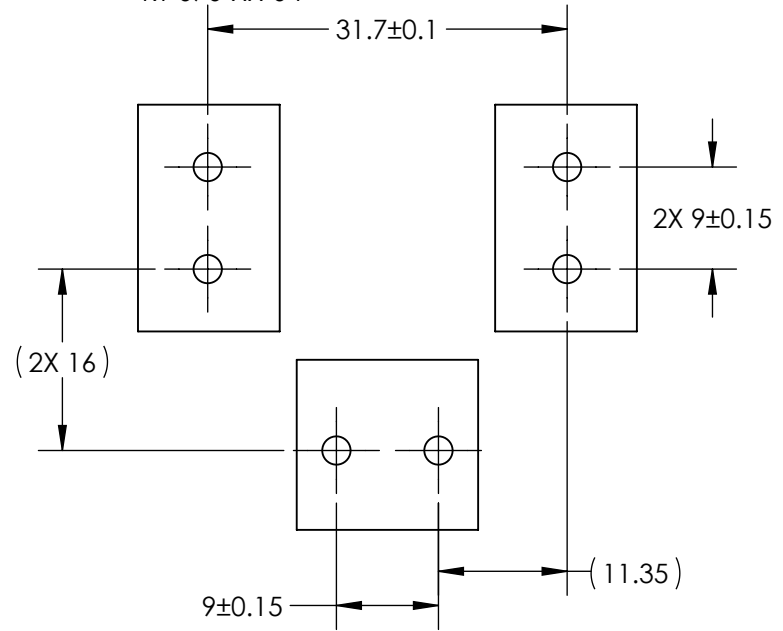
	ECO NO: 05315	PART LIFECYCLE: RELEASED	
	APPROVED BY: MICHAEL BEALE	DEVELOPMENT CYCLE: PRODUCTION	
	APPROVED DATE: 04AUG22	DESCRIPTION:	
	PROJECT NO: 101270	<h2 style="text-align: center;">SALES DRAWING</h2>	
ENGINEER: MICHAEL BEALE			
REELL PRECISION MANUFACTURING 1259 WILLOW LAKE BOULEVARD SAINT PAUL, MINNESOTA 55110-5103, USA	DRAWN BY:	PART NO: RT-070	
THIS PRINT IS THE CONFIDENTIAL PROPERTY OF REELL PRECISION MFG.	THIRD ANGLE PROJECTION 	SCALE: 1:1	DO NOT SCALE DRAWING
INTERPRET PRINT PER ASME Y14.5M-2009	DIMENSIONS: mm	SHEET 2 OF 7	

REV: J


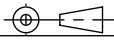
MOUNTING CONFIGURATION FOR
RT-070-XX-01



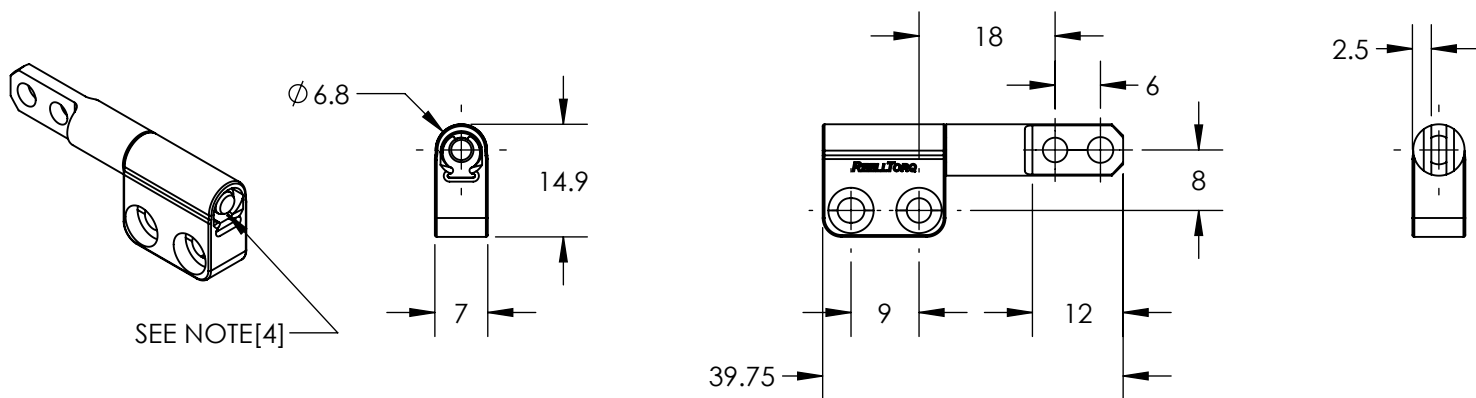
MOUNTING CONFIGURATION FOR
RT-070-XX-04



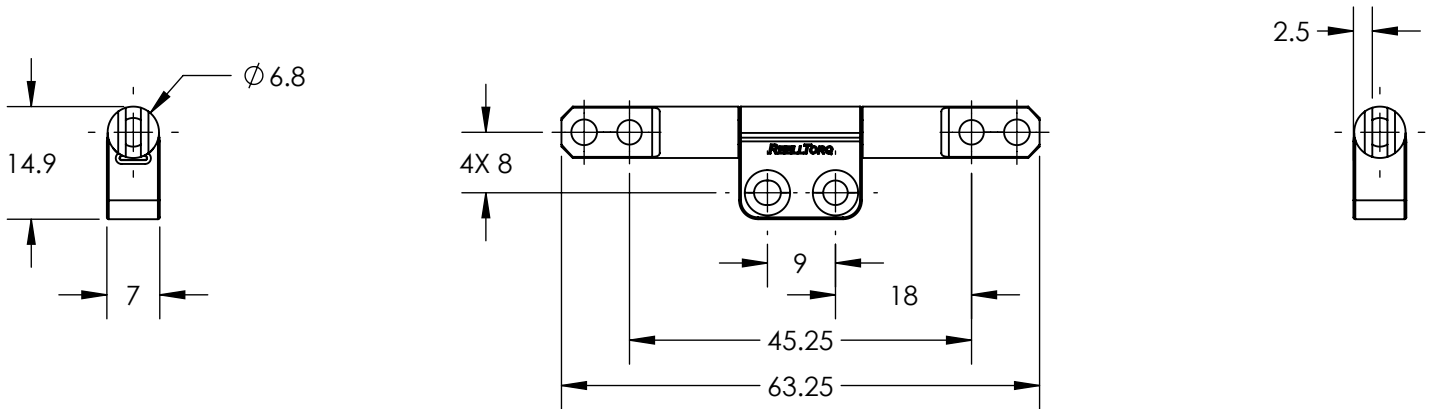
SPECIFICATION SUBJECT TO CHANGE

	ECO NO: 05315	PART LIFECYCLE: RELEASED		
	APPROVED BY: MICHAEL BEALE	DEVELOPMENT CYCLE: PRODUCTION		
	APPROVED DATE: 04AUG22	DESCRIPTION:		
	PROJECT NO: 101270	<h1>SALES DRAWING</h1>		
REELL PRECISION MANUFACTURING 1259 WILLOW LAKE BOULEVARD SAINT PAUL, MINNESOTA 55110-5103, USA	ENGINEER: MICHAEL BEALE	PART NO: RT-070 REV: J		
THIS PRINT IS THE CONFIDENTIAL PROPERTY OF REELL PRECISION MFG.	DRAWN BY:			
INTERPRET PRINT PER ASME Y14.5M-2009	THIRD ANGLE PROJECTION 	SCALE: 1.5:1	DO NOT SCALE DRAWING	SHEET 3 OF 7

RT - 070 - XX - 02



RT - 070 - XX - 05



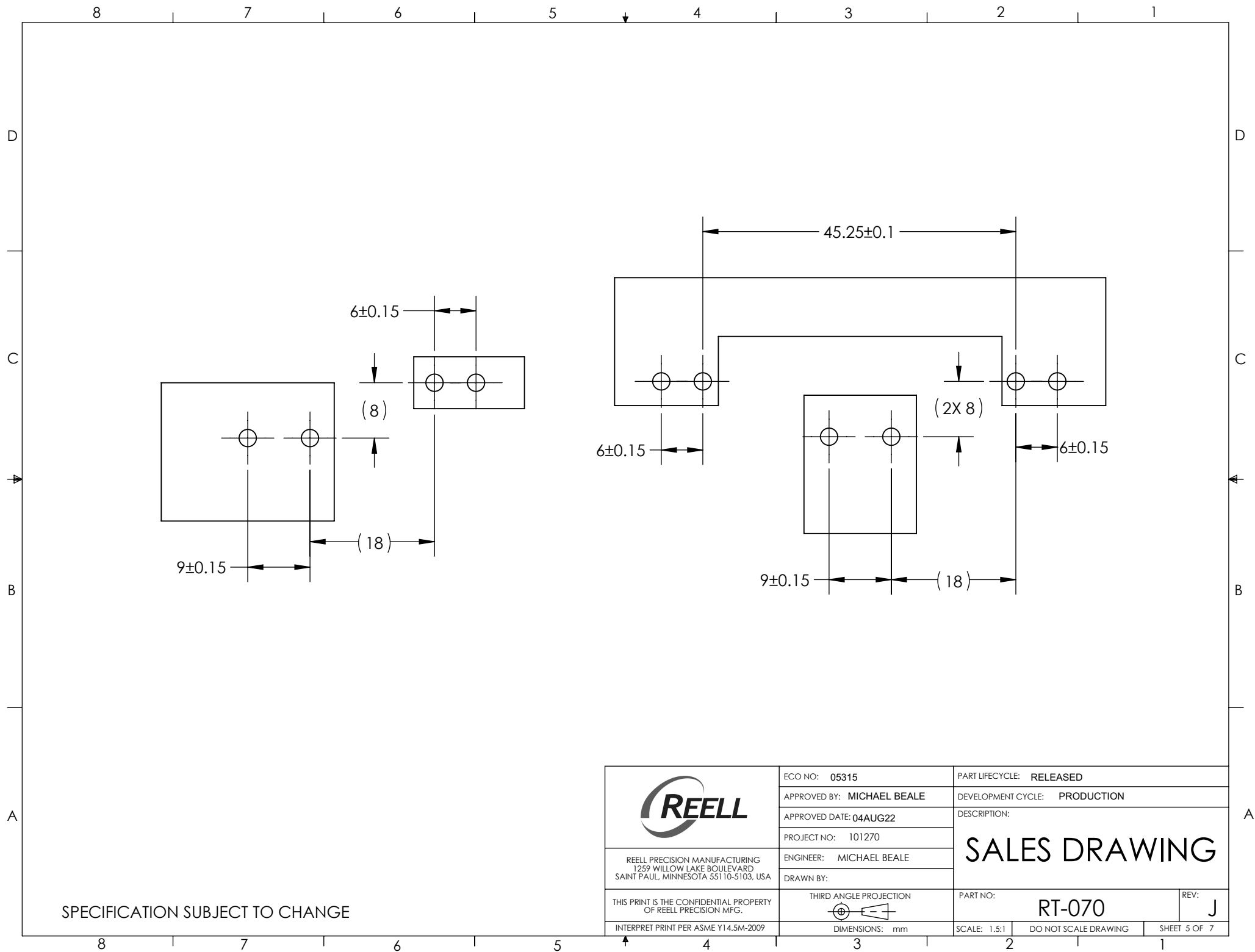
ECO NO: 05315	PART LIFECYCLE: RELEASED			
APPROVED BY: MICHAEL BEALE	DEVELOPMENT CYCLE: PRODUCTION			
APPROVED DATE: 04AUG22	DESCRIPTION:			
PROJECT NO: 101270	SALES DRAWING			
ENGINEER: MICHAEL BEALE				
DRAWN BY:				
THIS PRINT IS THE CONFIDENTIAL PROPERTY OF REELL PRECISION MFG.	THIRD ANGLE PROJECTION	PART NO: RT-070	REV: J	
INTERPRET PRINT PER ASME Y14.5M-2009	DIMENSIONS: mm	SCALE: 1:1	DO NOT SCALE DRAWING	SHEET 4 OF 7

SALES DRAWING

SPECIFICATION SUBJECT TO CHANGE

PART NO: RT-070 REV: J

SCALE: 1:1 DO NOT SCALE DRAWING SHEET 4 OF 7



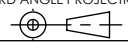
REELL PRECISION MANUFACTURING
 1259 WILLOW LAKE BOULEVARD
 SAINT PAUL, MINNESOTA 55110-5103, USA

ECO NO: 05315
 APPROVED BY: MICHAEL BEALE
 APPROVED DATE: 04AUG22
 PROJECT NO: 101270
 ENGINEER: MICHAEL BEALE
 DRAWN BY:

PART LIFECYCLE: RELEASED
 DEVELOPMENT CYCLE: PRODUCTION
 DESCRIPTION:

SALES DRAWING

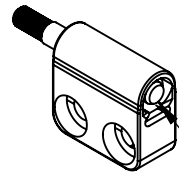
THIS PRINT IS THE CONFIDENTIAL PROPERTY
 OF REELL PRECISION MFG.
 INTERPRET PRINT PER ASME Y14.5M-2009

THIRD ANGLE PROJECTION

 DIMENSIONS: mm

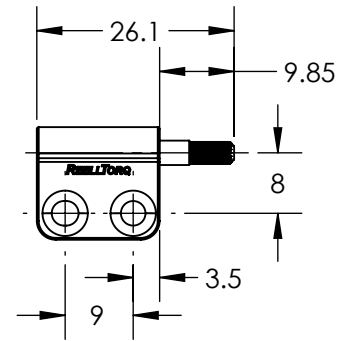
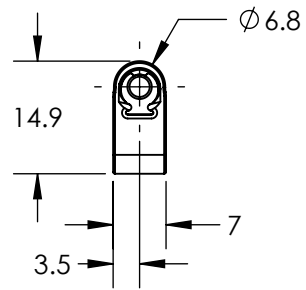
PART NO: RT-070
 REV: J
 SCALE: 1.5:1 DO NOT SCALE DRAWING SHEET 5 OF 7

SPECIFICATION SUBJECT TO CHANGE

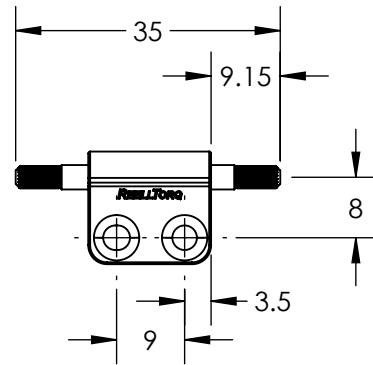
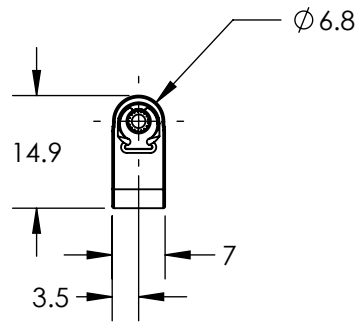
RT - 070 - XX - 03


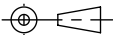


SEE NOTE [4]



RT - 070 - XX - 06



	ECO NO: 05315	PART LIFECYCLE: RELEASED	
	APPROVED BY: MICHAEL BEALE	DEVELOPMENT CYCLE: PRODUCTION	
	APPROVED DATE: 04AUG22	DESCRIPTION:	
	PROJECT NO: 101270	<h2>SALES DRAWING</h2>	
ENGINEER: MICHAEL BEALE			
REELL PRECISION MANUFACTURING 1259 WILLOW LAKE BOULEVARD SAINT PAUL, MINNESOTA 55110-5103, USA	DRAWN BY:	PART NO: RT-070	
THIS PRINT IS THE CONFIDENTIAL PROPERTY OF REELL PRECISION MFG.	THIRD ANGLE PROJECTION 	SCALE: 1:1	DO NOT SCALE DRAWING
INTERPRET PRINT PER ASME Y14.5M-2009	DIMENSIONS: mm	SHEET 6 OF 7	

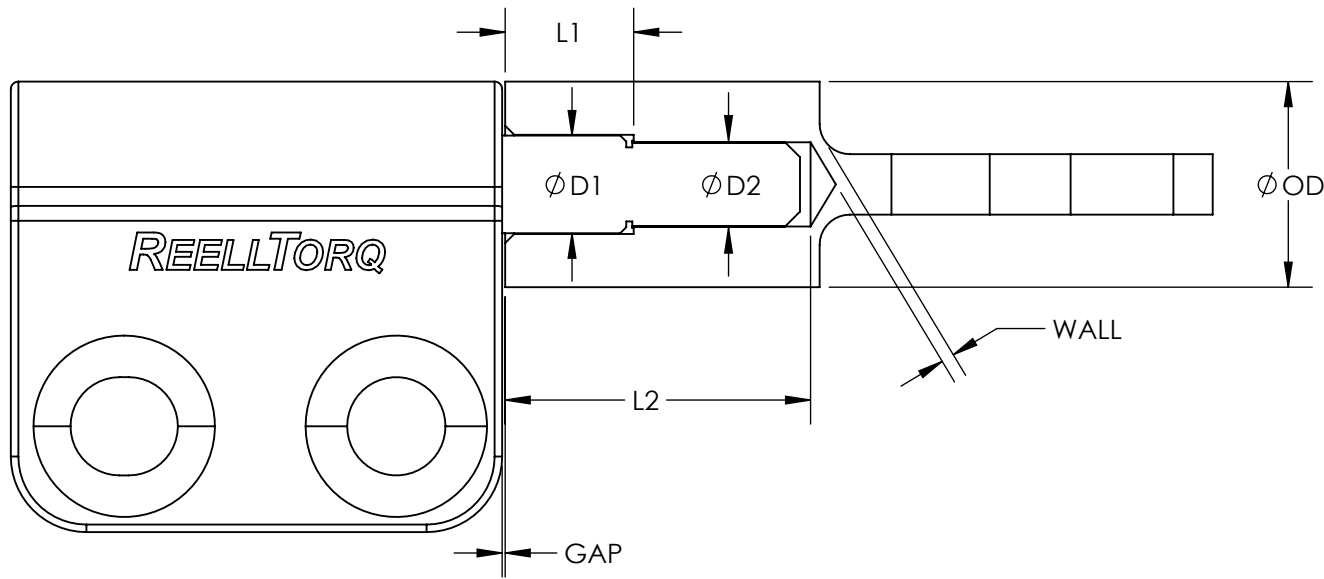
SPECIFICATION SUBJECT TO CHANGE

REV: J

8 7 6 5 4 3 2 1

RT-070

MATERIAL	D1	D2	L1	L2	OD	WALL	GAP
DIE CAST ZINC	3.18+/-0.03	2.7+/-0.03	4.25+/-0.15	10.1 MIN	6 MIN	1 MIN	0.1 NOMINAL
DIE CAST ALUMINUM	3.18+/-0.03	2.7+/-0.03	4.25+/-0.15	10.1 MIN	6 MIN	1 MIN	0.1 NOMINAL
MILD STEEL	3.28+/-0.05	2.785+/-0.015	4.25+/-0.15	10.1 MIN	6 MIN	1 MIN	0.1 NOMINAL
WROUGHT ALUMINUM	3.28+/-0.05	2.785+/-0.015	4.25+/-0.15	10.1 MIN	6 MIN	1 MIN	0.1 NOMINAL



SCALE 4 : 1



REELL PRECISION MANUFACTURING
1259 WILLOW LAKE BOULEVARD
SAINT PAUL, MINNESOTA 55110-5103, USA

THIS PRINT IS THE CONFIDENTIAL PROPERTY
OF REELL PRECISION MFG.

INTERPRET PRINT PER ASME Y14.5M-2009

ECO NO: 05315

APPROVED BY: MICHAEL BEALE

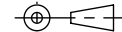
APPROVED DATE: 04AUG22

PROJECT NO: 101270

ENGINEER: MICHAEL BEALE

DRAWN BY:

THIRD ANGLE PROJECTION



DIMENSIONS: mm

PART LIFECYCLE: RELEASED

DEVELOPMENT CYCLE: PRODUCTION

DESCRIPTION:

SALES DRAWING

PART NO:

RT-070

REV:

J

SCALE: 3:1

DO NOT SCALE DRAWING

SHEET 7 OF 7

SPECIFICATION SUBJECT TO CHANGE

8 7 6 5 4 3 2 1