

CATALOG CODE

RT - 070 - XX - XX

TORQUE IN-LBS

- 03
- 04
- 05
- 06
- 07
- 08


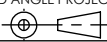
SHAFT END TYPE

- 04- DUAL FLAG
- 05- DUAL STRAIGHT
- 06- DUAL KNURLED SHAFT END

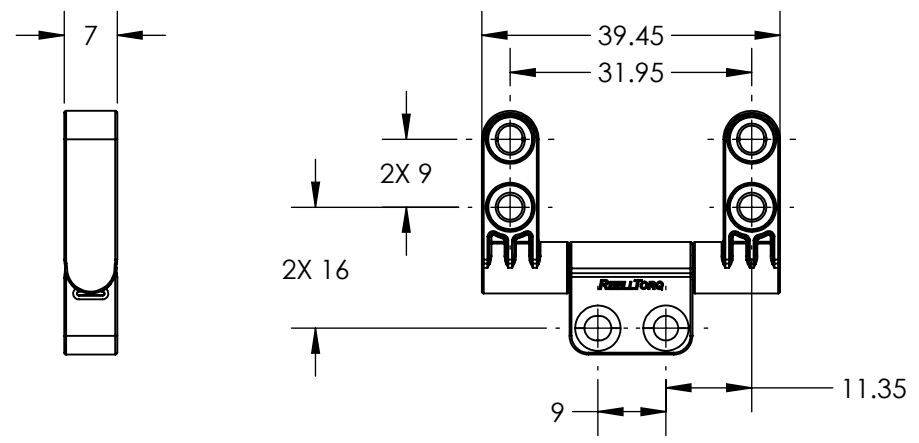
NOTES:

1. APPLICATION CONDITIONS REFERENCE (USER MUST DETERMINE FITNESS FOR USE IN APPLICATION).
2. ENVIRONMENTAL CONDITIONS: -20° TO +80°C. UP TO 10% OF LIFE CYCLES AT HOT AND COLD CONDITIONS.
3. LIFE: 50,000 CYCLES.
ONE CYCLE CONSISTS OF 90° CW AND 90° CCW AT 10% DUTY CYCLE FOR SPEEDS LESS THAN 100RPM.
- [4] HINGE DESIGNED TO SUPPORT A MINIMAL AXIAL FORCE IN DIRECTION SHOWN, NOT DESIGNED TO SUPPORT AXIAL FORCE IN THE OPPOSITE DIRECTION.
5. MATERIALS:
ZINC DIE CAST HOUSINGS & FLAG SHAFT ENDS
STEEL STRAIGHT SHAFT ENDS
HARDENED STEEL SHAFT
HARDENED STEEL TORQUE CLIPS
MINERAL OIL BASED LUBRICANT
6. FINISH:
NON-COSMETIC PLAIN.
CLEAR CHROMATE RUST PREVENTATIVE COATING ON THE STRAIGHT SHAFT.
7. SHIP ANGLE 0° ± 5° BETWEEN HOUSINGS.
8. TOLERANCE UNLESS SPECIFIED IS ±0.15.
9. SEE PAGE 5 FOR RECOMMENDED MATING HOLE GEOMETRY FOR KNURLED SHAFT END.
- [10] DESIGNED TO ACCEPT M3, #4 OR #5 SCREW FOR RT-070 (USE LOW HEAD VERSION IF HEAD MUST BE SUBFLUSH.)

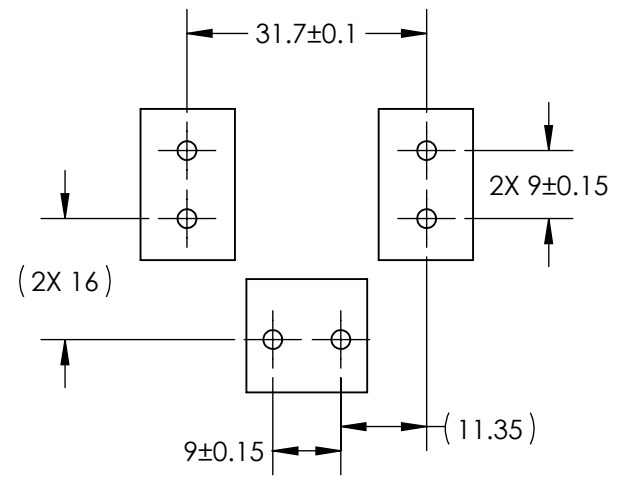
SPECIFICATION SUBJECT TO CHANGE

	ECO NO: 03806	PART LIFECYCLE: RELEASED	
	APPROVED BY: MICHAEL BEALE	DEVELOPMENT CYCLE: PRODUCTION	
	APPROVED DATE: 07MAY21	DESCRIPTION:	
	PROJECT NO: 101270	SALES DRAWING	
REELL PRECISION MANUFACTURING 1259 WILLOW LAKE BOULEVARD SAINT PAUL, MINNESOTA 55110-5103, USA	ENGINEER: MICHAEL BEALE	RT-070 DUAL	
THIS PRINT IS THE CONFIDENTIAL PROPERTY OF REELL PRECISION MFG.	DRAWN BY:		
INTERPRET PRINT PER ASME Y14.5M-2009	THIRD ANGLE PROJECTION 	SCALE: 2:1	REV: A
	DIMENSIONS: mm	DO NOT SCALE DRAWING	SHEET 1 OF 5


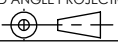
RT - 070 - XX - 04



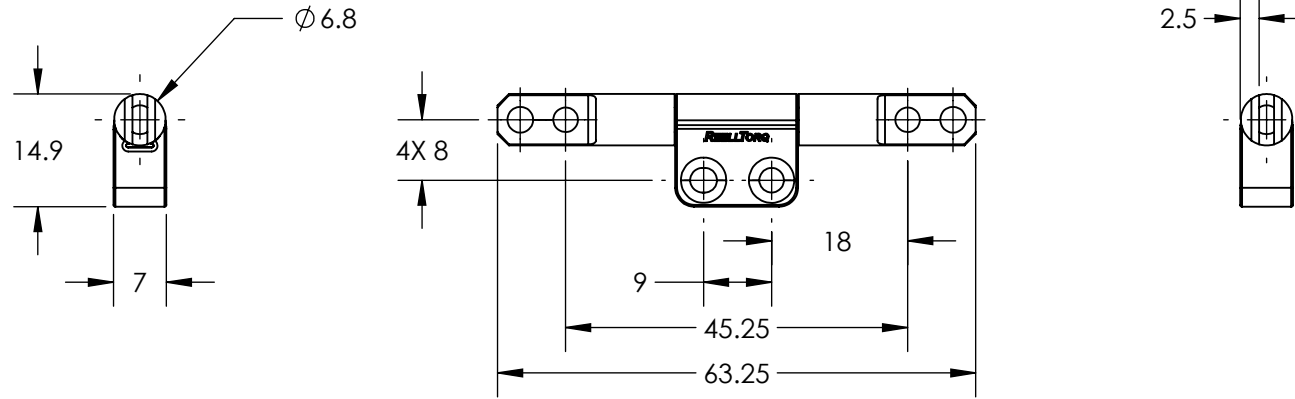
MOUNTING CONFIGURATION



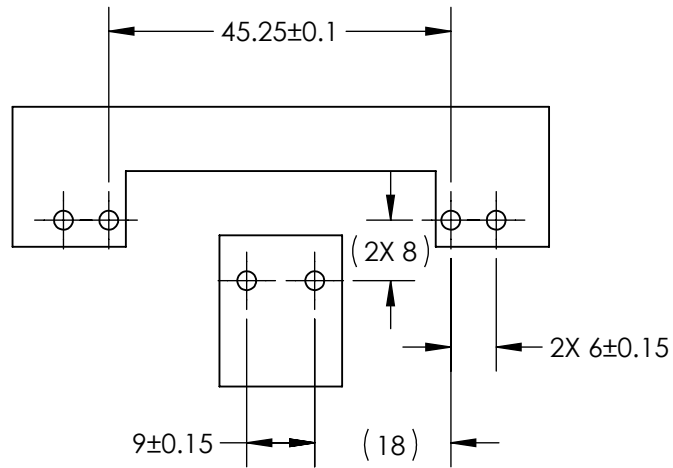
SPECIFICATION SUBJECT TO CHANGE

	ECO NO: 03806	PART LIFECYCLE: RELEASED		
	APPROVED BY: MICHAEL BEALE	DEVELOPMENT CYCLE: PRODUCTION		
	APPROVED DATE: 07MAY21	DESCRIPTION:		
	PROJECT NO: 101270	SALES DRAWING		
REELL PRECISION MANUFACTURING 1259 WILLOW LAKE BOULEVARD SAINT PAUL, MINNESOTA 55110-5103, USA	ENGINEER: MICHAEL BEALE	PART NO: RT-070 DUAL REV: A		
THIS PRINT IS THE CONFIDENTIAL PROPERTY OF REELL PRECISION MFG.	DRAWN BY:			
INTERPRET PRINT PER ASME Y14.5M-2009	THIRD ANGLE PROJECTION 	SCALE: 1:1	DO NOT SCALE DRAWING	SHEET 2 OF 5

RT - 070 - XX - 05



MOUNTING CONFIGURATION



REELL PRECISION MANUFACTURING
1259 WILLOW LAKE BOULEVARD
SAINT PAUL, MINNESOTA 55110-5103, USA

THIS PRINT IS THE CONFIDENTIAL PROPERTY
OF REELL PRECISION MFG.

INTERPRET PRINT PER ASME Y14.5M-2009

ECO NO: 03806

APPROVED BY: MICHAEL BEALE

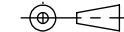
APPROVED DATE: 07MAY21

PROJECT NO: 101270

ENGINEER: MICHAEL BEALE

DRAWN BY:

THIRD ANGLE PROJECTION



DIMENSIONS: mm

PART LIFECYCLE: RELEASED

DEVELOPMENT CYCLE: PRODUCTION

DESCRIPTION:

SALES DRAWING

PART NO: RT-070 DUAL

REV: A

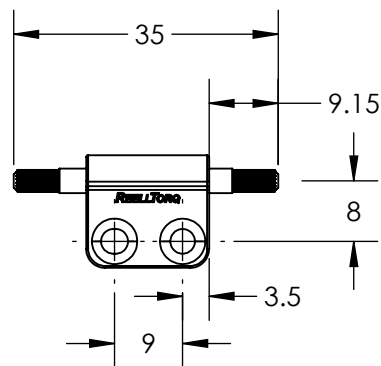
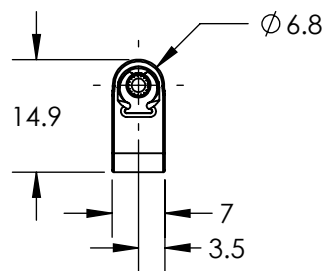
SCALE: 1:1

DO NOT SCALE DRAWING


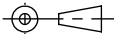
SHEET 3 OF 5

SPECIFICATION SUBJECT TO CHANGE

RT - 070 - XX - 06



SPECIFICATION SUBJECT TO CHANGE

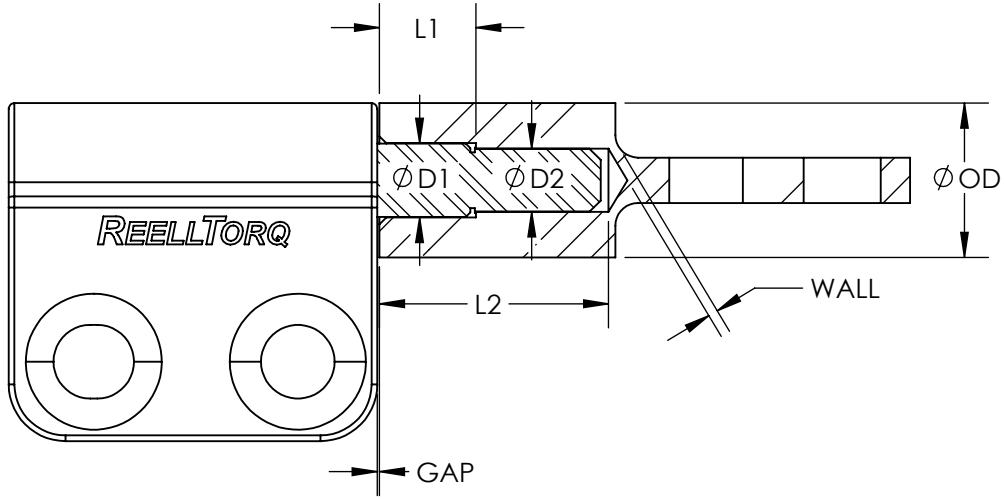
	ECO NO: 03806	PART LIFECYCLE: RELEASED	
	APPROVED BY: MICHAEL BEALE	DEVELOPMENT CYCLE: PRODUCTION	
	APPROVED DATE: 07MAY21	DESCRIPTION:	
	PROJECT NO: 101270	<h2 style="text-align: center;">SALES DRAWING</h2>	
ENGINEER: MICHAEL BEALE			
REELL PRECISION MANUFACTURING 1259 WILLOW LAKE BOULEVARD SAINT PAUL, MINNESOTA 55110-5103, USA	DRAWN BY:	PART NO: RT-070 DUAL	
THIS PRINT IS THE CONFIDENTIAL PROPERTY OF REELL PRECISION MFG.	THIRD ANGLE PROJECTION 	SCALE: 1:1	REV: A
INTERPRET PRINT PER ASME Y14.5M-2009	DIMENSIONS: mm	DO NOT SCALE DRAWING	SHEET 4 OF 5

8 7 6 5 4 3 2 1


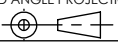
RT-070 DUAL

MATERIAL	**D1	**D2	L1	L2	OD	WALL	GAP
DIE CAST ZINC	3.18+/-0.03	2.7+/-0.03	4.25+/-0.15	10.1 MIN	6 MIN	1 MIN	0.1 NOMINAL
DIE CAST ALUMINUM	3.18+/-0.03	2.7+/-0.03	4.25+/-0.15	10.1 MIN	6 MIN	1 MIN	0.1 NOMINAL
MILD STEEL	3.28+/-0.05	2.785+/-0.015	4.25+/-0.15	10.1 MIN	6 MIN	1 MIN	0.1 NOMINAL
WROUGHT ALUMINUM	3.28+/-0.05	2.785+/-0.015	4.25+/-0.15	10.1 MIN	6 MIN	1 MIN	0.1 NOMINAL

**PRESS-FIT DIMENSIONS FOR THE RT-070-XX-06 ARE DIFFERENT THAN THOSE FOR THE RT-070-XX-03.



SPECIFICATION SUBJECT TO CHANGE

	ECO NO: 03806	PART LIFECYCLE: RELEASED
	APPROVED BY: MICHAEL BEALE	DEVELOPMENT CYCLE: PRODUCTION
	APPROVED DATE: 07MAY21	DESCRIPTION:
	PROJECT NO: 101270	SALES DRAWING
REELL PRECISION MANUFACTURING 1259 WILLOW LAKE BOULEVARD SAINT PAUL, MINNESOTA 55110-5103, USA	ENGINEER: MICHAEL BEALE	PART NO: RT-070 DUAL
THIS PRINT IS THE CONFIDENTIAL PROPERTY OF REELL PRECISION MFG.	DRAWN BY:	
INTERPRET PRINT PER ASME Y14.5M-2009	THIRD ANGLE PROJECTION 	SCALE: 3:1
	DIMENSIONS: mm	DO NOT SCALE DRAWING
		SHEET 5 OF 5

8 7 6 5 4 3 2 1