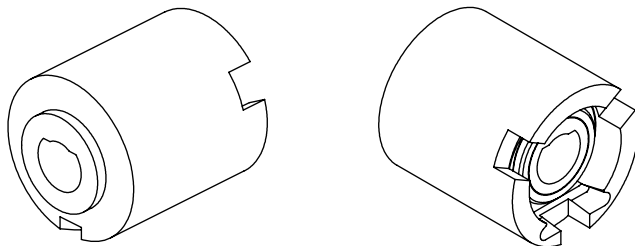
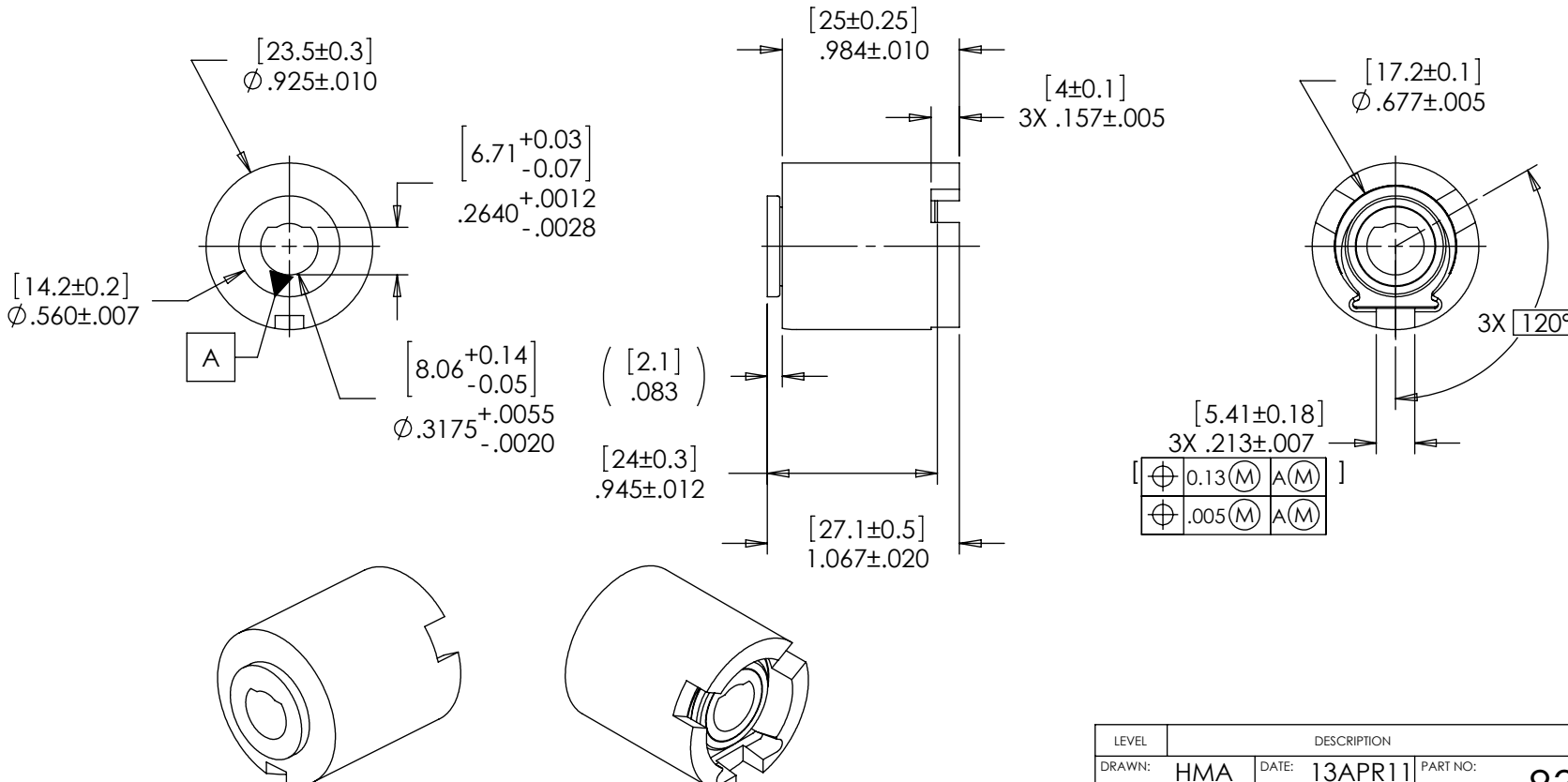


REELL SLIP CLUTCH HIGH TORQUE

DESCRIPTION:  
SC-HT-Nm-BORE  
SHOWN:  
8mm BORE  
"D" SHAFT  
THREE DOG DRIVE HUB

CURRENT TORQUES AVAILABLE  
SLIP TORQUE: [4.0 Nm] 35.4 Lb-in ±20%  
SLIP TORQUE: [5.0 Nm] 44.3 Lb-in ±20%  
SLIP TORQUE: [6.0 Nm] 53.1 Lb-in ±20%  
SLIP TORQUE: [7.5 Nm] 66.4 Lb-in ±20%

REELL PART NO.  
83227-006  
83227-008  
83227-010  
83227-013



INTERPRET PRINT PER  
ASME Y14.5M-1994  
THIS PRINT IS THE  
CONFIDENTIAL PROPERTY  
OF REELL PRECISION MFG.  
THIRD ANGLE PROJECTION



REELL PRECISION MANUFACTURING  
1259 WILLOW LAKE BOULEVARD  
SAINT PAUL, MINNESOTA 55110-5103, USA

LEVEL	DESCRIPTION	DRAWN	DATE	APPROVED
DRAWN: HMA	DATE: 13APR11	PART NO: 83227-XXX		
CHECKED: RGW	DATE: 09MAY11	TITLE: SLIP DEVICE HIGH TORQUE		
APPROVED: RGW	DATE: 09MAY11	DESCRIPTION: SC-HT		
REVISED:	DIMS: [mm]IN	REV: A		
SCALE: 1:1		DO NOT SCALE DRAWING		SHEET 1 OF 1

SPECIFICATION SUBJECT TO CHANGE