

CATALOG CODE


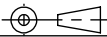
TI-120-X.XX-XX

TORQUE N-m
-0.25
-0.35
-0.50
-0.65
-0.80
-1.00
-1.20

FINS NO.
- 01
- 02

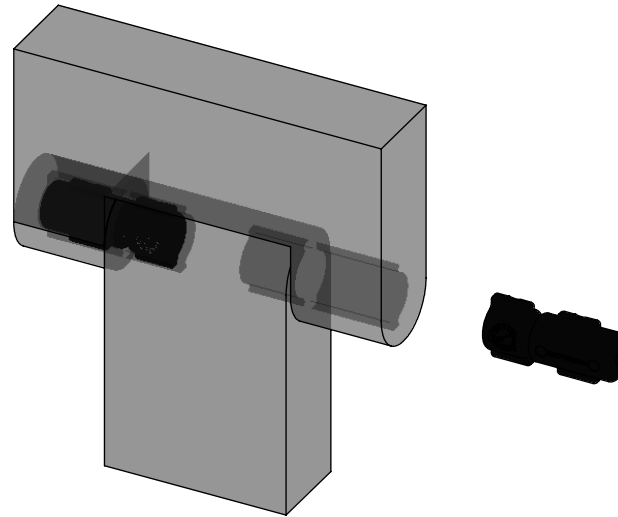
NOTES:


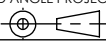
1. APPLICATION CONDITIONS REFERENCE USER MUST DETERMINE FITNESS FOR USE IN APPLICATION.
2. LIFE: 25,000 CYCLES.
ONE CYCLE = 120° OPEN/120° CLOSED.
FIVE(5) CYCLES PER MINUTE MAX.
3. MATERIAL:
BRACKET AND SHAFT END ARE ENGINEERED PLASTIC
SHAFT AND TORQUE ELEMENT ARE HARDENED STEEL
4. TABS ON HINGE TO BE ALIGNED AS SHOWN ±5°.
5. STATIC TORQUE IS NORMALLY WITHIN 10% OF DYNAMIC TORQUE.

	ECO NO: 04370	PART LIFECYCLE: RELEASED	
	APPROVED BY: NOAH RYAN	DEVELOPMENT CYCLE: PRODUCTION	
	APPROVED DATE: 17FEB22	SALES DRAWING	
	PROJECT NO: 0		
REELL PRECISION MANUFACTURING 1259 WILLOW LAKE BOULEVARD SAINT PAUL, MINNESOTA 55110-5103, USA	ENGINEER: BOB WAHLSTEDT	PART NO: TI-120	
THIS PRINT IS THE CONFIDENTIAL PROPERTY OF REELL PRECISION MFG.	DRAWN BY: NOAH RYAN THIRD ANGLE PROJECTION 	SCALE: 1:1	REV: P
INTERPRET PRINT PER ASME Y14.5M-2009	DIMENSIONS: mm	DO NOT SCALE DRAWING	SHEET 1 OF 5

SPECIFICATIONS SUBJECT TO CHANGE

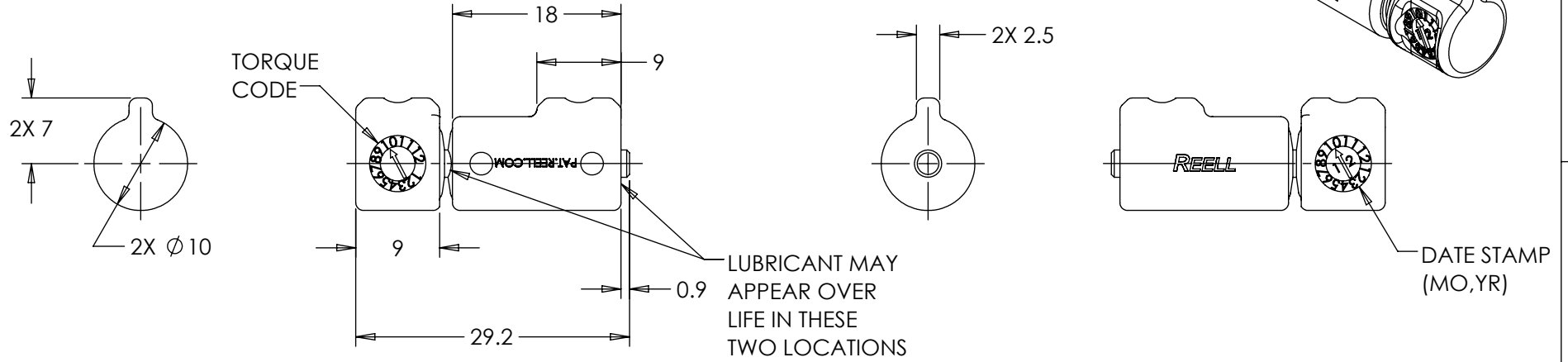
CATALOG CODE		TORQUE CODE	DYNAMIC TORQUE Nm
ONE FIN	TWO FINS		
TI-120-0.25-01	TI-120-0.25-02	2	0.25±0.11
TI-120-0.35-01	TI-120-0.35-02	3	0.35±0.12
TI-120-0.50-01	TI-120-0.50-02	4	0.50±0.13
TI-120-0.65-01	TI-120-0.65-02	6	0.65±0.13
TI-120-0.80-01	TI-120-0.80-02	8	0.80±0.16
TI-120-1.00-01	TI-120-1.00-02	10	1.00±0.20
TI-120-1.20-01	TI-120-1.20-02	12	1.20±0.24



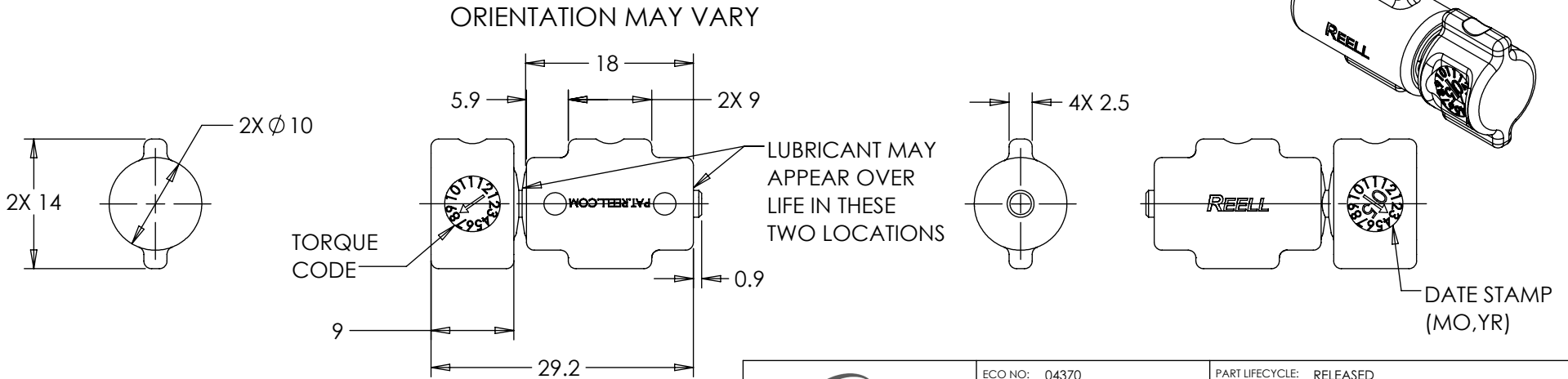
	ECO NO: 04370	PART LIFECYCLE: RELEASED	
	APPROVED BY: NOAH RYAN	DEVELOPMENT CYCLE: PRODUCTION	
	APPROVED DATE: 17FEB22	DESCRIPTION: SALES DRAWING	
	PROJECT NO: 0		
REELL PRECISION MANUFACTURING 1259 WILLOW LAKE BOULEVARD SAINT PAUL, MINNESOTA 55110-5103, USA	ENGINEER: BOB WAHLSTEDT	PART NO: TI-120	
THIS PRINT IS THE CONFIDENTIAL PROPERTY OF REELL PRECISION MFG.	DRAWN BY: NOAH RYAN		
INTERPRET PRINT PER ASME Y14.5M-2009	THIRD ANGLE PROJECTION 	SCALE: 2:3	DO NOT SCALE DRAWING
	DIMENSIONS: mm	SHEET 2 OF 5	

SPECIFICATIONS SUBJECT TO CHANGE

TI -120-X.XX-01



TI -120-X.XX-02



ALL DIMENSIONS REFERENCE
SEE CAD MODEL FOR UNSPECIFIED FEATURES.

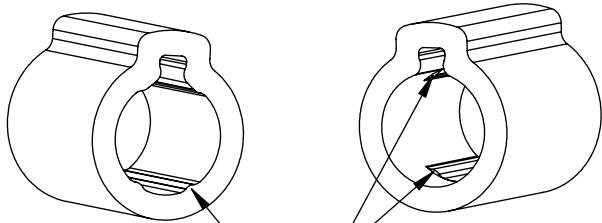
SPECIFICATIONS SUBJECT TO CHANGE

<p>REELL PRECISION MANUFACTURING 1259 WILLOW LAKE BOULEVARD SAINT PAUL, MINNESOTA 55110-5103, USA</p>	ECO NO: 04370	PART LIFECYCLE: RELEASED
	APPROVED BY: NOAH RYAN	DEVELOPMENT CYCLE: PRODUCTION
	APPROVED DATE: 17FEB22	DESCRIPTION:
	PROJECT NO: 0	SALES DRAWING
<p>THIS PRINT IS THE CONFIDENTIAL PROPERTY OF REELL PRECISION MFG.</p> <p>INTERPRET PRINT PER ASME Y14.5M-2009</p>	<p>ENGINEER: BOB WAHLSTEDT</p> <p>DRAWN BY: NOAH RYAN</p> <p>THIRD ANGLE PROJECTION</p> <p>DIMENSIONS: mm</p>	<p>PART NO: TI-120</p> <p>REV: P</p> <p>SCALE: 1.5:1</p> <p>DO NOT SCALE DRAWING</p> <p>SHEET 3 OF 5</p>

TI -120-X.XX-01 MOUNTING RECOMMENDATION

NOTES:

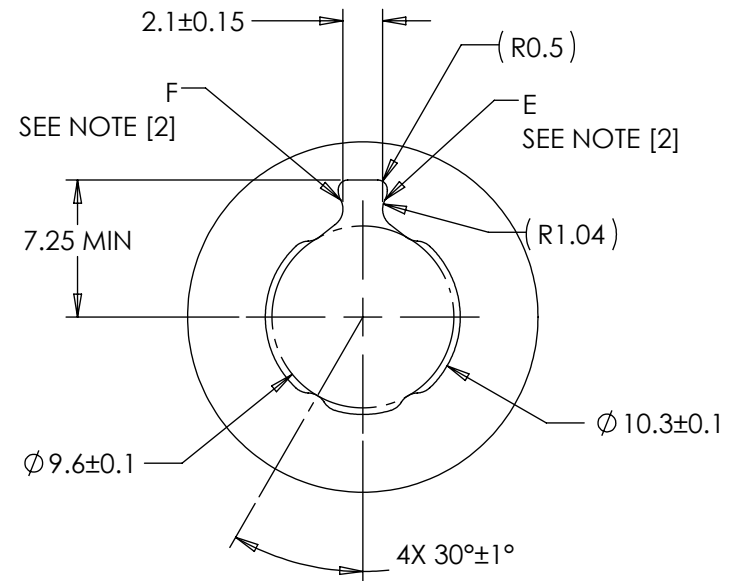
- [1] LOCATE MOUNTING GAP OVER HINGE BODY FOR ADDITIONAL SUPPORT.
- [2] GEOMETRY BETWEEN POINTS E & F CCW MAY VARY IF DESIRED (CUTTER RELIEF).
- [3] INSERT GAP MAY CHANGE DURING INSTALLATION.



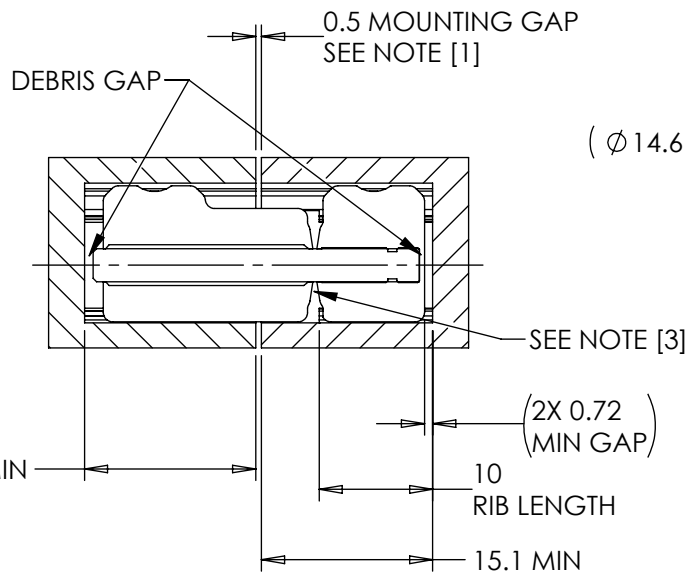
LONG SIDE OF INSERT
ACCEPTS FULL
LENGTH RIBS

SHORT SIDE OF INSERT
REQUIRES PARTIAL
RIB LENGTH

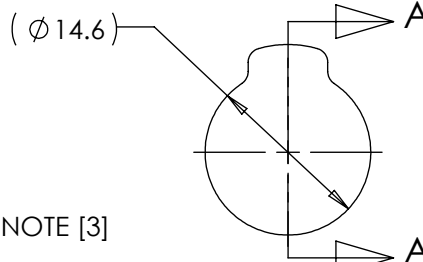
PRESS FIT PROFILE



SCALE 2.5:1



SECTION A-A



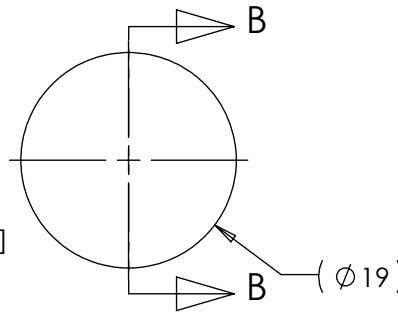
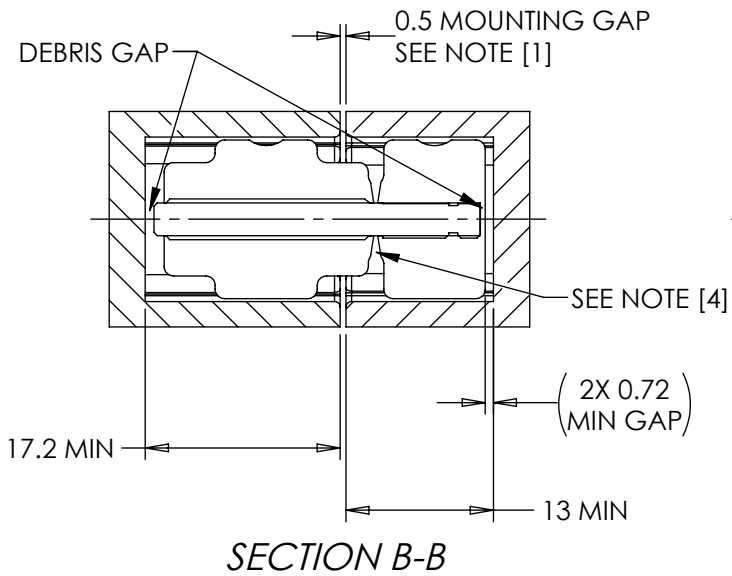
SPECIFICATIONS SUBJECT TO CHANGE

	ECO NO: 04370	PART LIFECYCLE: RELEASED
	APPROVED BY: NOAH RYAN	DEVELOPMENT CYCLE: PRODUCTION
	APPROVED DATE: 17FEB22	DESCRIPTION:
	PROJECT NO: 0	SALES DRAWING
REELL PRECISION MANUFACTURING 1259 WILLOW LAKE BOULEVARD SAINT PAUL, MINNESOTA 55110-5103, USA	ENGINEER: BOB WAHLSTEDT	PART NO: TI-120
THIS PRINT IS THE CONFIDENTIAL PROPERTY OF REELL PRECISION MFG.	DRAWN BY: NOAH RYAN	
INTERPRET PRINT PER ASME Y14.5M-2009	THIRD ANGLE PROJECTION 	SCALE: 1.5:1
	DIMENSIONS: mm	DO NOT SCALE DRAWING
		SHEET 4 OF 5

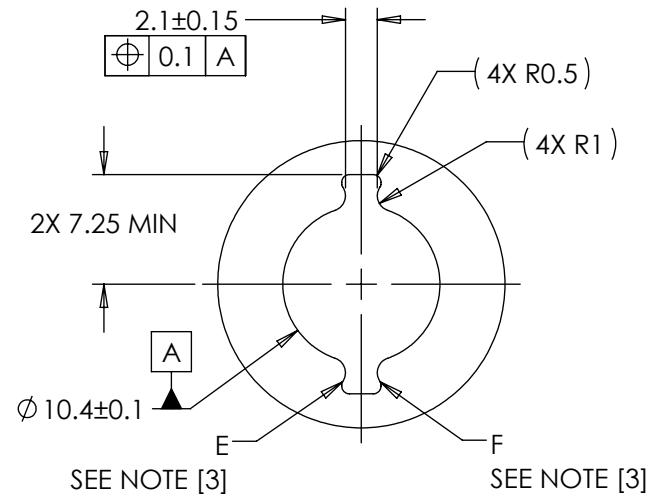
TI -120-X.XX-02 MOUNTING RECOMMENDATION

NOTES:

- [1] LOCATE MOUNTING GAP OVER HINGE BODY FOR ADDITIONAL SUPPORT.
2. TWO FIN TORQUE INSERTS CAN BE INSERTED EITHER ORIENTATION.
- [3] GEOMETRY BETWEEN POINTS E & F CCW MAY VARY IF DESIRED (CUTTER RELIEF).
- [4] INSERT GAP MAY CHANGE DURING INSTALLATION.


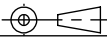


PRESS FIT PROFILE



SCALE 2:1

SPECIFICATIONS SUBJECT TO CHANGE

	ECO NO: 04370	PART LIFECYCLE: RELEASED	
	APPROVED BY: NOAH RYAN	DEVELOPMENT CYCLE: PRODUCTION	
	APPROVED DATE: 17FEB22	DESCRIPTION:	
	PROJECT NO: 0	SALES DRAWING	
REELL PRECISION MANUFACTURING 1259 WILLOW LAKE BOULEVARD SAINT PAUL, MINNESOTA 55110-5103, USA	ENGINEER: BOB WAHLSTEDT	PART NO: TI-120	
	DRAWN BY: NOAH RYAN		
THIS PRINT IS THE CONFIDENTIAL PROPERTY OF REELL PRECISION MFG.	THIRD ANGLE PROJECTION 	SCALE: 1.5:1	DO NOT SCALE DRAWING
INTERPRET PRINT PER ASME Y14.5M-2009	DIMENSIONS: mm		SHEET 5 OF 5