

TI - 160 - X.XX - X - XX

TORQUE N-m
- 4.00
- 5.00
- 6.00

DIRECTION
F - ONE WAY FORWARD
R - ONE WAY REVERSE

FINS NO.
-01

NOTES:


- APPLICATION CONDITIONS REFERENCE (USER MUST DETERMINE FITNESS FOR USE IN APPLICATION).
ENVIRONMENT CONDITIONS: -20° TO +80 °C UP TO 10% OF LIFE CYCLES AT HOT AND COLD CONDITIONS.
- LIFE: 25,000 CYCLES.
ONE CYCLE = 120° OPEN/120° CLOSED.
FIVE(5) CYCLES PER MINUTE MAX.
- MATERIAL:
BRACKET AND SHAFT END ARE ENGINEERED PLASTIC
SHAFT, TORQUE ELEMENT, AND ONE WAY BEARING ARE HARDENED STEEL
- STATIC TORQUE IS NORMALLY WITHIN 10% OF DYNAMIC TORQUE.
- TAB MAY BE MISALIGNED DUE TO SHIPPING. MISALIGNMENT IS EASILY FIXED BY ROTATING BRACKET IN THE TORQUE FREE DIRECTION.

SPECIFICATION SUBJECT TO CHANGE

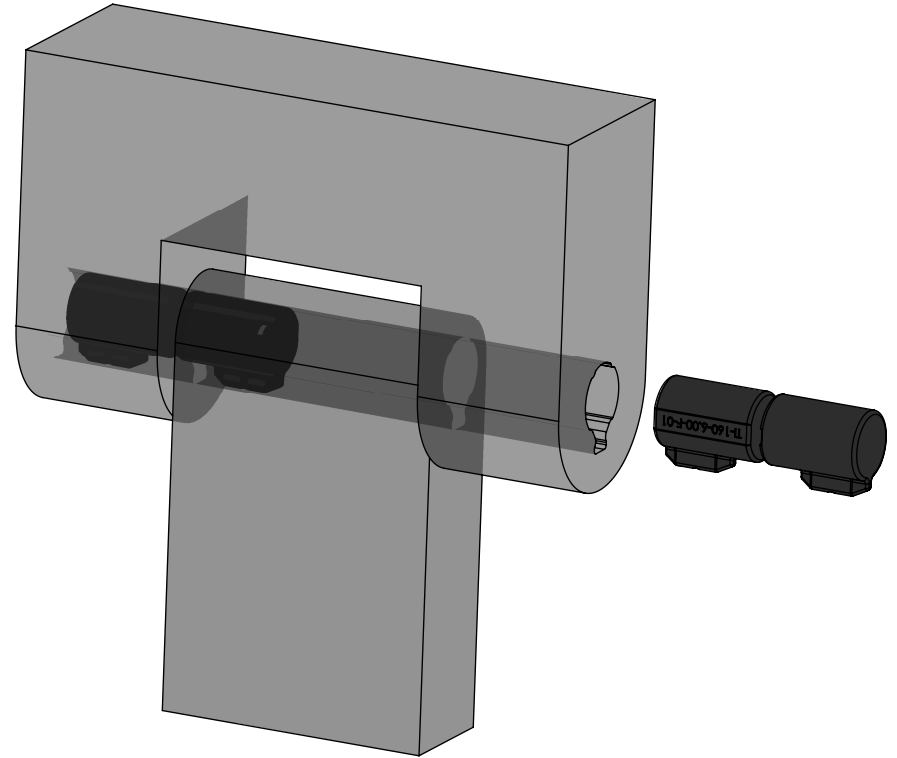
INTERPRET PRINT PER ASME Y14.5M-1994
THIS PRINT IS THE CONFIDENTIAL PROPERTY OF REELL PRECISION MFG.

THIRD ANGLE PROJECTION



LEVEL	DESCRIPTION		DRAWN	DATE	APPROVED
DRAWN:	CRD	DATE: 03FEB17	PART NO: 84494-XXX		
CHECKED:	CRD	DATE: 21JUN17	TITLE: ReellTorq INSERT		
APPROVED:	CRD	DATE: 21JUN17	DESCRIPTION: TI-160		
REVISED:	26OCT18	DIMS: mm	REV: A		
 REELL PRECISION MANUFACTURING 1259 WILLOW LAKE BOULEVARD SAINT PAUL, MINNESOTA 55110-5103, USA			SCALE: 1:0.5	DO NOT SCALE DRAWING	SHEET 1 OF 5

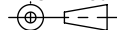
CATALOG NUMBER	DYNAMIC TORQUE		
	NOMINAL		TOLERANCE
	Nm	Lb-In	+/- %
TI-160-4.00-F-01	4.00	35.4	30
TI-160-5.00-F-01	5.00	44.3	25
TI-160-6.00-F-01	6.00	53.1	20
TI-160-4.00-R-01	4.00	35.4	30
TI-160-5.00-R-01	5.00	44.3	25
TI-160-6.00-R-01	6.00	53.1	20



SPECIFICATION SUBJECT TO CHANGE

INTERPRET PRINT PER
ASME Y14.5M-1994
THIS PRINT IS THE
CONFIDENTIAL PROPERTY
OF REELL PRECISION MFG.

THIRD ANGLE PROJECTION

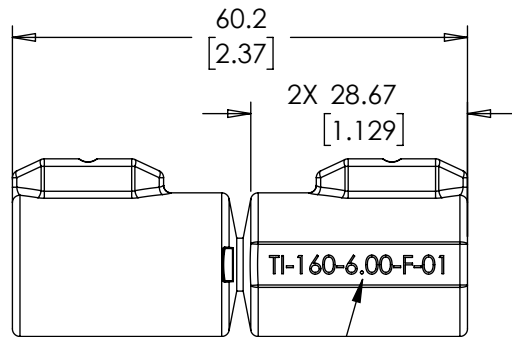


LEVEL	DESCRIPTION	DRAWN	DATE	APPROVED
DRAWN: CRD	DATE: 03FEB17	PART NO: 84494-XXX		
CHECKED: CRD	DATE: 21JUN17	TITLE: ReellTorq INSERT		
APPROVED: CRD	DATE: 21JUN17	DESCRIPTION: TI-160		
REVISED: 26OCT18	DIMS: mm	SCALE: 1:1		REV: A
		DO NOT SCALE DRAWING		SHEET 2 OF 5
REELL PRECISION MANUFACTURING 1259 WILLOW LAKE BOULEVARD SAINT PAUL, MINNESOTA 55110-5103, USA				

TI-160-X.XX-X-01

NOTES:

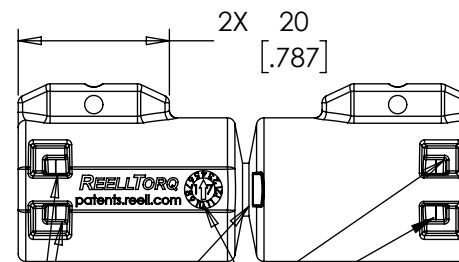
6. DIMENSIONAL TOLERANCES ARE BUILT INTO THE MOUNTING RECOMMENDATION SECTION. THEREFORE DIMENSIONS ON THIS PAGE ARE TO BE CONSIDERED REFERENCE.
- [7] ARROW INDICATES HIGH TORQUE DIRECTION FOR SPECIFIED CONFIGURATION.



PART NUMBER

2X $\phi 19$ [.748]

LUBRICANT MAY APPEAR OVER LIFE IN THESE FIVE LOCATIONS

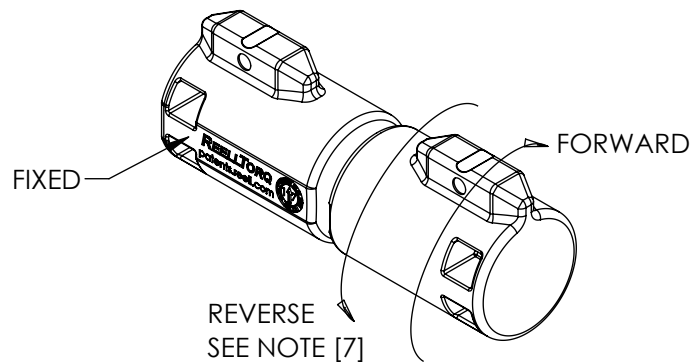


DATE STAMP (MO, YR)

2X 6 [.236]

R1 TYP [.039]

2X 23.5 [.925]



SPECIFICATION SUBJECT TO CHANGE

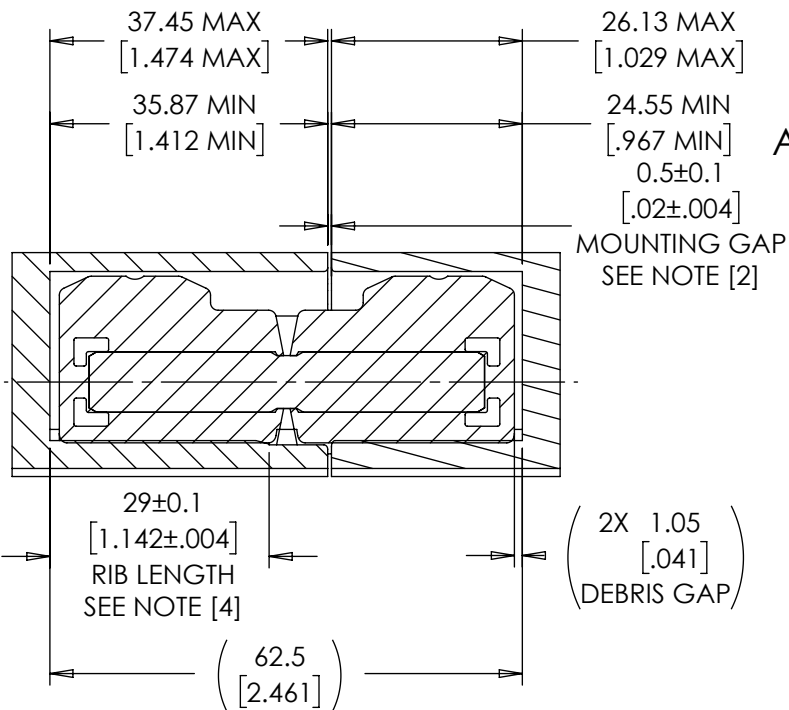
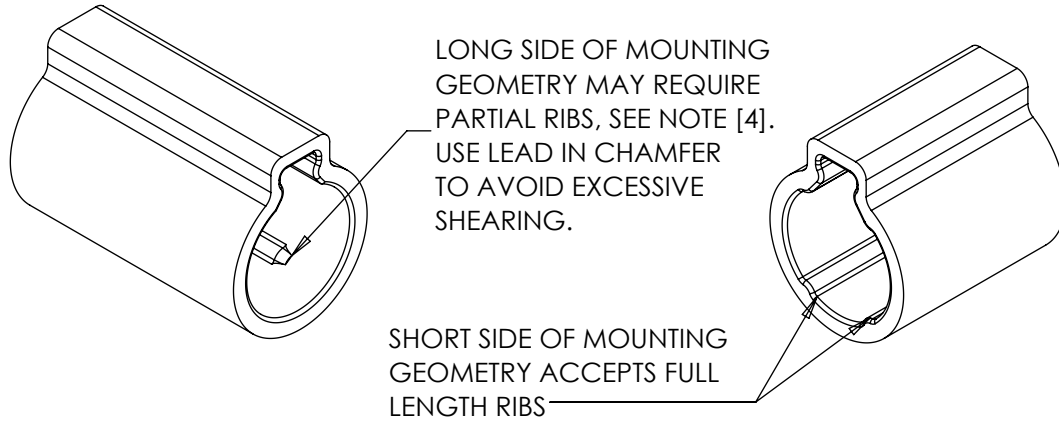
LEVEL	DESCRIPTION		DRAWN	DATE	APPROVED
DRAWN: CRD	DATE: 03FEB17	PART NO: 84494-XXX			
CHECKED: CRD	DATE: 21JUN17	TITLE: ReelTorq INSERT			
APPROVED: CRD	DATE: 21JUN17	DESCRIPTION: TI-160			
REVISED: 26OCT18	DIMS: mm[IN]	REV: A			
<p>INTERPRET PRINT PER ASME Y14.5M-1994 THIS PRINT IS THE CONFIDENTIAL PROPERTY OF REELL PRECISION MFG.</p> <p>THIRD ANGLE PROJECTION</p>		 REELL PRECISION MANUFACTURING 1259 WILLOW LAKE BOULEVARD SAINT PAUL, MINNESOTA 55110-5103, USA		SCALE: 1:1	DO NOT SCALE DRAWING
			SHEET 3 OF 5		

TI -160-X.XX-X-01

MOUNTING RECOMMENDATION

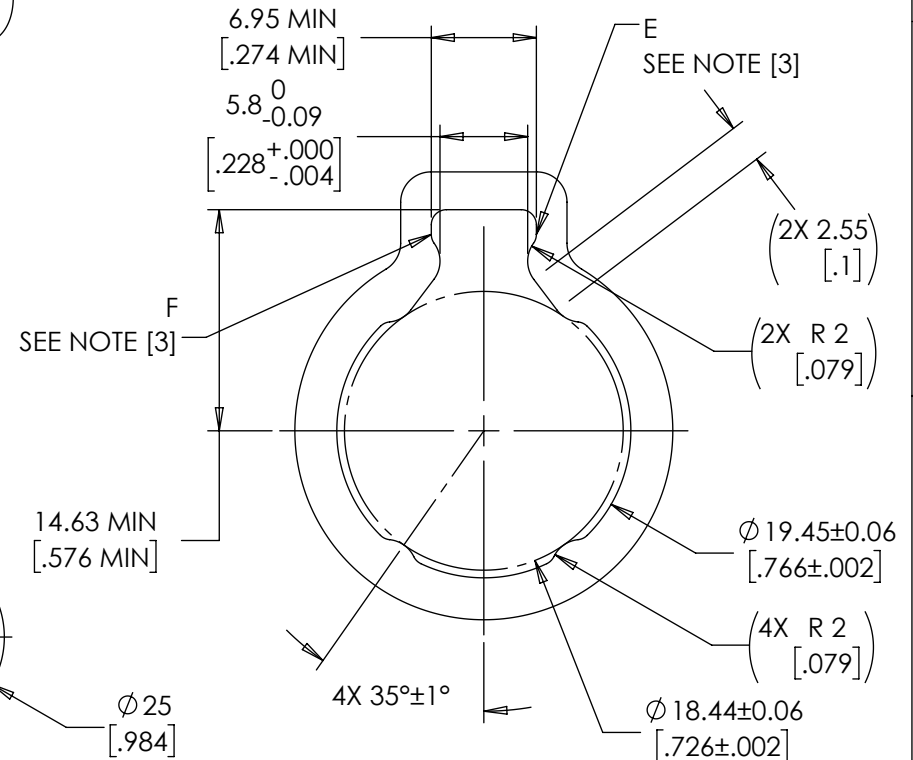
NOTES:

- [1] DOUBLE THE NEGATIVE TOLERANCE WHEN PRESSING INTO PLASTIC.
- [2] LOCATE MOUNTING GAP OVER HINGE BODY FOR ADDITIONAL SUPPORT.
- [3] GEOMETRY BETWEEN POINTS E & F CCW MAY VARY IF DESIRED (CUTTER RELIEF).
- [4] LONG SIDE OF MOUNTING GEOMETRIES REQUIRE PARTIAL RIBS FOR METAL PARTS WITH $\leq 1.0^\circ$ OF DRAFT, AND $\leq 1.8^\circ$ FOR PLASTIC PARTS.



SECTION A-A

SPECIFICATION SUBJECT TO CHANGE



LEVEL	DESCRIPTION	DRAWN	DATE	APPROVED
DRAWN: CRD	DATE: 03FEB17	PART NO: 84494-XXX		
CHECKED: CRD	DATE: 21JUN17	TITLE: ReelTorq INSERT		
APPROVED: CRD	DATE: 21JUN17	DESCRIPTION: TI-160		
REVISED: 26OCT18	DIMS: mm[IN]	REV: A		
		SCALE: 1:1	DO NOT SCALE DRAWING	SHEET 4 OF 5

INTERPRET PRINT PER ASME Y14.5M-1994
THIS PRINT IS THE CONFIDENTIAL PROPERTY OF REELL PRECISION MFG.
THIRD ANGLE PROJECTION

REELL PRECISION MANUFACTURING
1259 WILLOW LAKE BOULEVARD
SAINT PAUL, MINNESOTA 55110-5103, USA

TI -160-X.XX-X-01

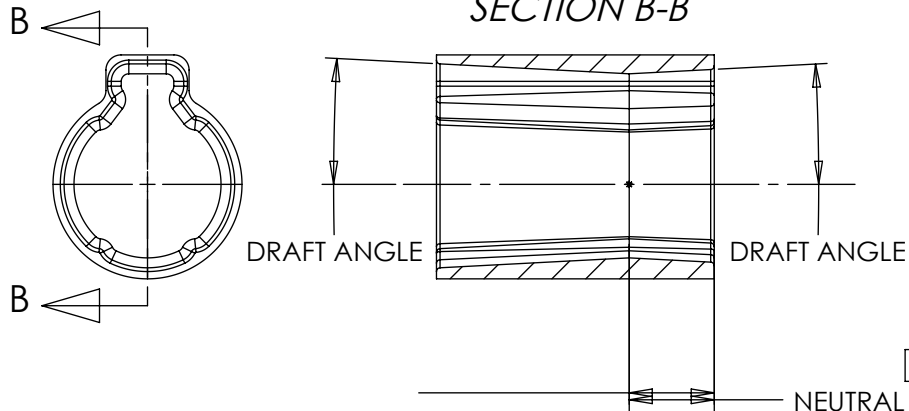
MOUNTING RECOMMENDATION WITH DRAFT

NOTES:

- [1] WHEN DRAFTING BETWEEN 1° AND 2°:
ADD 0.1 mm OF INTERFERENCE OVER THE TAB, FROM 5.8 NOM. TO 5.7 NOM., TO GUARANTEE CONTACT OVER FULL LENGTH OF THE TAB.
- [2] NEUTRAL PLANE INDICATES THE PLANE OF NOMINAL INTERFERENCE RECOMMENDED ON PREVIOUS PAGE.
- 3. LARGE DRAFT ANGLES WILL REDUCE RADIAL LOAD SUPPORT.

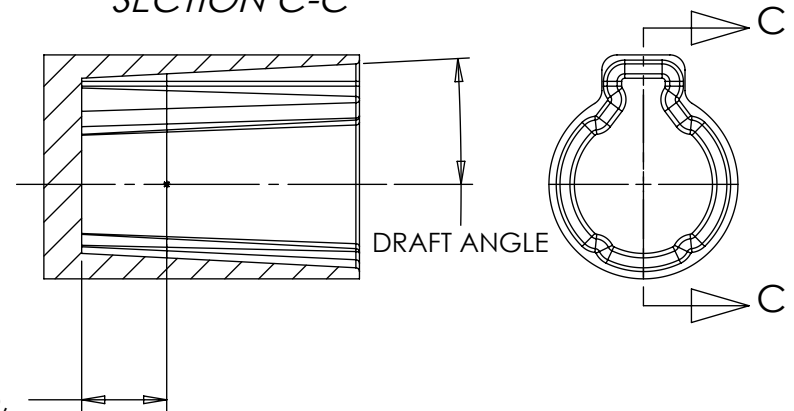
DOUBLE PULL DRAFTS

SECTION B-B



SINGLE PULL DRAFTS

SECTION C-C



11.25±0.1
[.443±.004]
NEUTRAL PLANE FROM END,
LONG AND SHORT GEOMETRY
SEE NOTES [1] & [2]

SPECIFICATION SUBJECT TO CHANGE

LEVEL	DESCRIPTION		DRAWN	DATE	APPROVED
DRAWN:	CRD	DATE: 03FEB17	PART NO: 84494-XXX		
CHECKED:	CRD	DATE: 21JUN17	TITLE: ReellTorq INSERT		
APPROVED:	CRD	DATE: 21JUN17	DESCRIPTION: TI-160		
REVISED:	26OCT18	DIMS: mm[IN]	SCALE: 1:1		REV: A
INTERPRET PRINT PER ASME Y14.5M-1994 THIS PRINT IS THE CONFIDENTIAL PROPERTY OF REELL PRECISION MFG. THIRD ANGLE PROJECTION				REELL PRECISION MANUFACTURING 1259 WILLOW LAKE BOULEVARD SAINT PAUL, MINNESOTA 55110-5103, USA	
			DO NOT SCALE DRAWING	SHEET 5 OF 5	