

TI - 160 - X.XX - X - XX

TORQUE N-m
- 4.00
- 5.00
- 6.00

DIRECTION
F - ONE WAY FORWARD
R - ONE WAY REVERSE

FINS NO.
-01

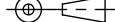
NOTES:

- APPLICATION CONDITIONS REFERENCE (USER MUST DETERMINE FITNESS FOR USE IN APPLICATION).  
ENVIRONMENT CONDITIONS: -20° TO +80 °C UP TO 10% OF LIFE CYCLES AT HOT AND COLD CONDITIONS.
- LIFE: 25,000 CYCLES.  
ONE CYCLE = 120° OPEN/120° CLOSED.  
FIVE(5) CYCLES PER MINUTE MAX.
- MATERIAL:  
BRACKET AND SHAFT END ARE ENGINEERED PLASTIC  
SHAFT, TORQUE ELEMENT, AND ONE WAY BEARING ARE HARDENED STEEL
- STATIC TORQUE IS NORMALLY WITHIN 10% OF DYNAMIC TORQUE.
- TAB MAY BE MISALIGNED DUE TO SHIPPING. MISALIGNMENT IS EASILY FIXED BY ROTATING BRACKET IN THE TORQUE FREE DIRECTION.

SPECIFICATION SUBJECT TO CHANGE

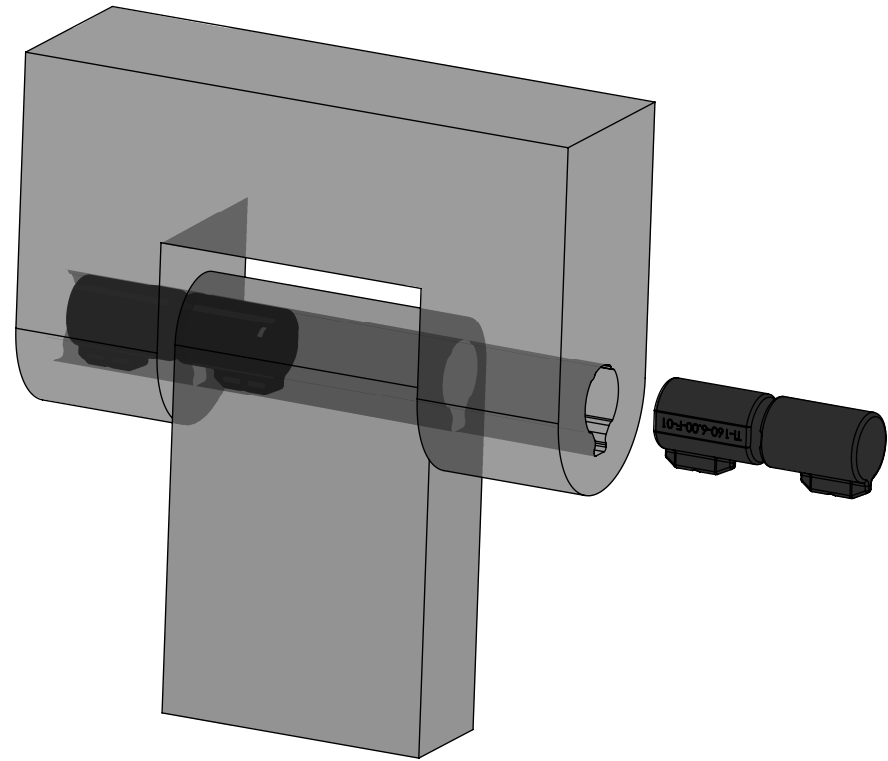
INTERPRET PRINT PER ASME Y14.5M-1994  
THIS PRINT IS THE CONFIDENTIAL PROPERTY OF REELL PRECISION MFG.

THIRD ANGLE PROJECTION



LEVEL	DESCRIPTION		DRAWN	DATE	APPROVED
DRAWN:	CRD	DATE: 03FEB17	PART NO: 84494-XXX		
CHECKED:	CRD	DATE: 21JUN17	TITLE: ReellTorq INSERT		
APPROVED:	CRD	DATE: 21JUN17	DESCRIPTION: TI-160		
REVISED:	11APR19	DIMS: mm	REV: B		
			SCALE: 1:0.5	DO NOT SCALE DRAWING	SHEET 1 OF 5
REELL PRECISION MANUFACTURING 1259 WILLOW LAKE BOULEVARD SAINT PAUL, MINNESOTA 55110-5103, USA					

CATALOG NUMBER	DYNAMIC TORQUE FORWARD DIRECTION			DYNAMIC TORQUE REVERSE DIRECTION		
	NOMINAL		TOLERANCE	NOMINAL		TOLERANCE
	Nm	Lb-In	+/- %	Nm	Lb-In	+/- %
TI-160-4.00-F-01	4	35.4	30	1.8	16	MAX
TI-160-5.00-F-01	5	44.3	25	1.8	16	MAX
TI-160-6.00-F-01	6	53.1	20	1.8	16	MAX
TI-160-4.00-R-01	1.8	16	MAX	4	35.4	30
TI-160-5.00-R-01	1.8	16	MAX	5	44.3	25
TI-160-6.00-R-01	1.8	16	MAX	6	53.1	20



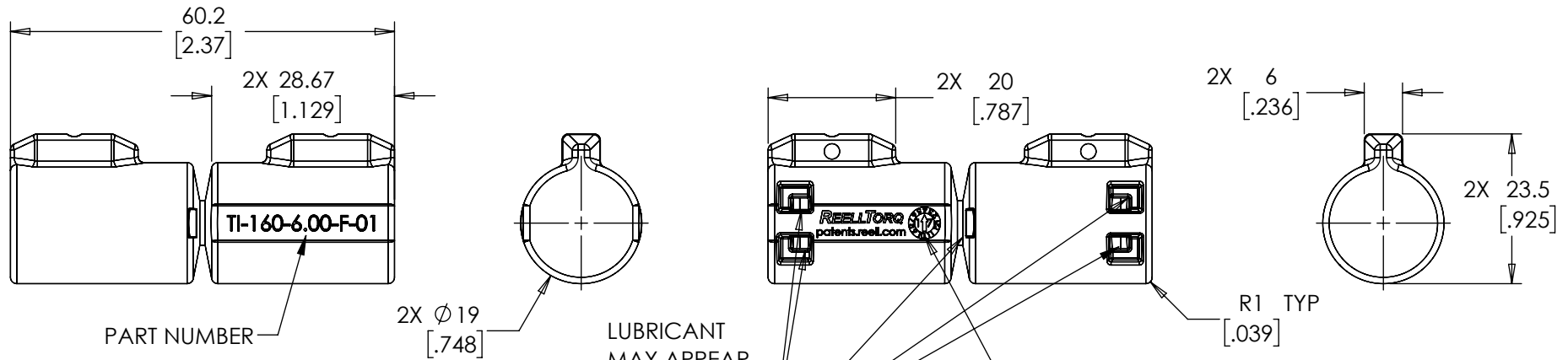
LEVEL:	DESCRIPTION:	DRAWN:	DATE:	APPROVED:
DRAWN: CRD	DATE: 03FEB17	PART NO:	84494-XXX	
CHECKED: CRD	DATE: 21JUN17	TITLE:	ReellTorq INSERT	
APPROVED: CRD	DATE: 21JUN17	REVISIONS:	11APR19 DIMS: mm	
INTERPRET PRINT PER ASME Y14.5M-1994 THIS PRINT IS THE CONFIDENTIAL PROPERTY OF REELL PRECISION MFG. THIRD ANGLE PROJECTION				DESCRIPTION: TI-160 REV: B
REELL PRECISION MANUFACTURING 1259 WILLOW LAKE BOULEVARD SAINT PAUL, MINNESOTA 55110-5103, USA		SCALE: 1:1	DO NOT SCALE DRAWING	SHEET 2 OF 5

SPECIFICATION SUBJECT TO CHANGE

# TI-160-X.XX-X-01

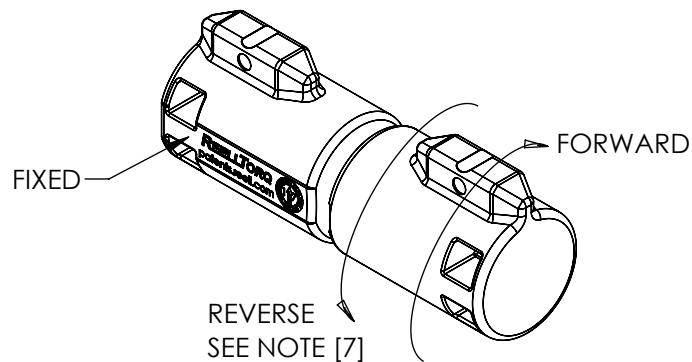
## NOTES:

6. DIMENSIONAL TOLERANCES ARE BUILT INTO THE MOUNTING RECOMMENDATION SECTION. THEREFORE DIMENSIONS ON THIS PAGE ARE TO BE CONSIDERED REFERENCE.
- [7] ARROW INDICATES HIGH TORQUE DIRECTION FOR SPECIFIED CONFIGURATION.



LUBRICANT MAY APPEAR OVER LIFE IN THESE FIVE LOCATIONS

DATE STAMP (MO, YR)



SPECIFICATION SUBJECT TO CHANGE

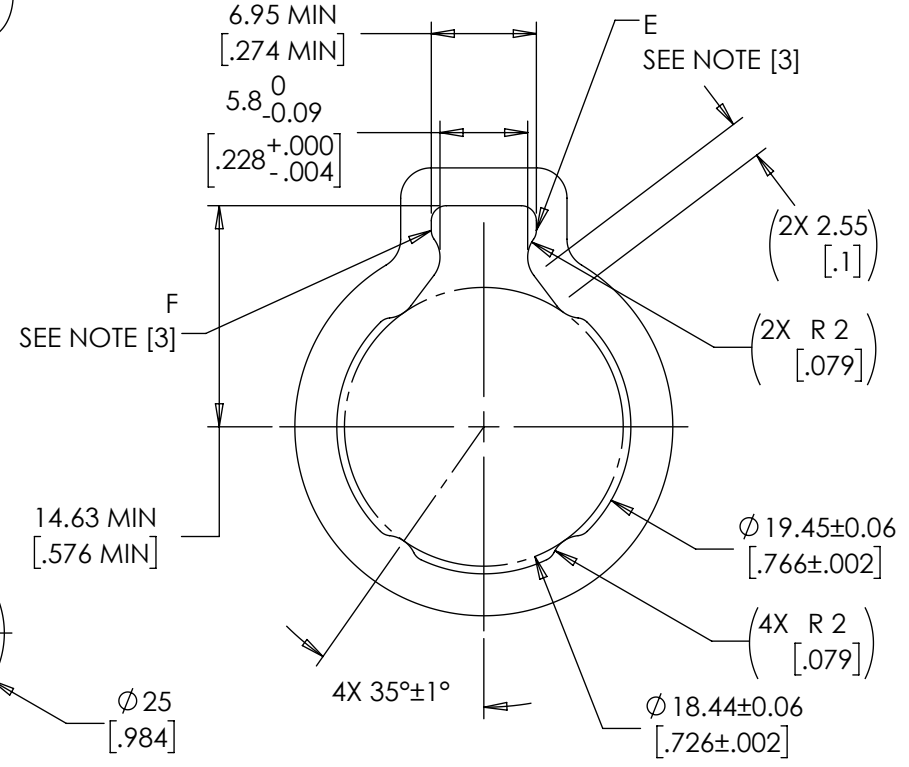
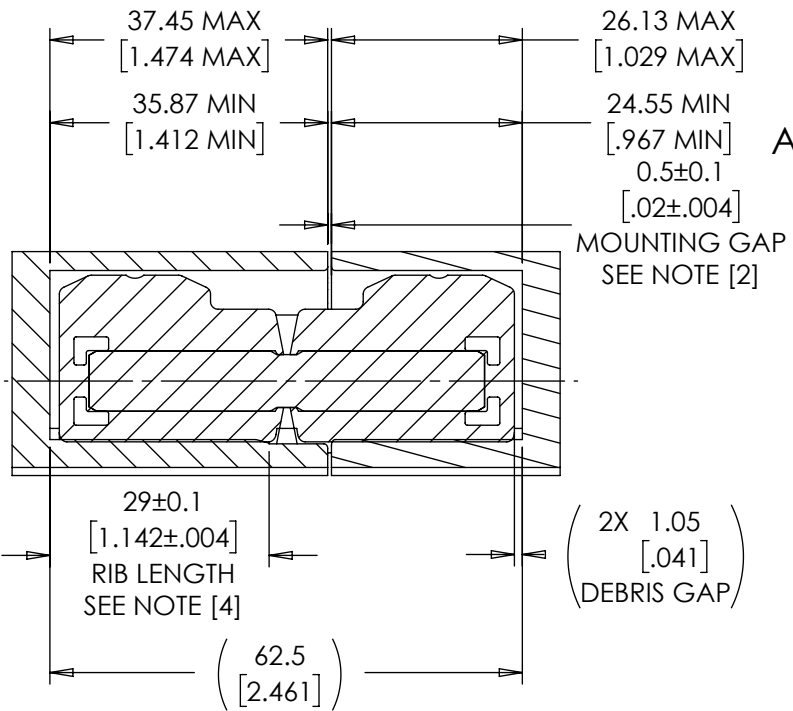
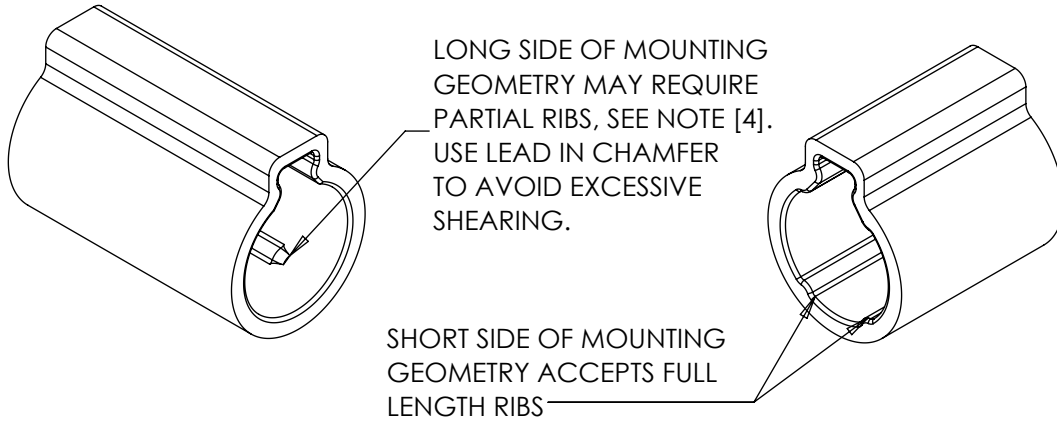
LEVEL	DESCRIPTION		DRAWN	DATE	APPROVED
DRAWN: CRD	DATE: 03FEB17	PART NO: 84494-XXX			
CHECKED: CRD	DATE: 21JUN17	TITLE: ReelTorq INSERT			
APPROVED: CRD	DATE: 21JUN17	DESCRIPTION: TI-160		REV: B	
REVISED: 11APR19	DIMS: mm[IN]	SCALE: 1:1		DO NOT SCALE DRAWING	
<p>INTERPRET PRINT PER ASME Y14.5M-1994 THIS PRINT IS THE CONFIDENTIAL PROPERTY OF REELL PRECISION MFG.</p> <p>THIRD ANGLE PROJECTION</p>		<p><b>REELL</b></p> <p>REELL PRECISION MANUFACTURING 1259 WILLOW LAKE BOULEVARD SAINT PAUL, MINNESOTA 55110-5103, USA</p>		SHEET 3 OF 5	

# TI -160-X.XX-X-01

## MOUNTING RECOMMENDATION

**NOTES:**

- [1] DOUBLE THE NEGATIVE TOLERANCE WHEN PRESSING INTO PLASTIC.
- [2] LOCATE MOUNTING GAP OVER HINGE BODY FOR ADDITIONAL SUPPORT.
- [3] GEOMETRY BETWEEN POINTS E & F CCW MAY VARY IF DESIRED (CUTTER RELIEF).
- [4] LONG SIDE OF MOUNTING GEOMETRIES REQUIRE PARTIAL RIBS FOR METAL PARTS WITH  $\leq 1.0^\circ$  OF DRAFT, AND  $\leq 1.8^\circ$  FOR PLASTIC PARTS.

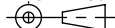


SPECIFICATION SUBJECT TO CHANGE

SECTION A-A

INTERPRET PRINT PER ASME Y14.5M-1994  
THIS PRINT IS THE CONFIDENTIAL PROPERTY OF REELL PRECISION MFG.

THIRD ANGLE PROJECTION



LEVEL	DESCRIPTION	DRAWN	DATE	APPROVED
DRAWN: CRD	DATE: 03FEB17	PART NO: 84494-XXX		
CHECKED: CRD	DATE: 21JUN17	TITLE: ReelTorq INSERT		
APPROVED: CRD	DATE: 21JUN17	DESCRIPTION: TI-160		
REVISED: 11APR19	DIMS: mm[IN]	REV: B		
REELL PRECISION MANUFACTURING 1259 WILLOW LAKE BOULEVARD SAINT PAUL, MINNESOTA 55110-5103, USA		SCALE: 1:1	DO NOT SCALE DRAWING	SHEET 4 OF 5



# TI -160-X.XX-X-01

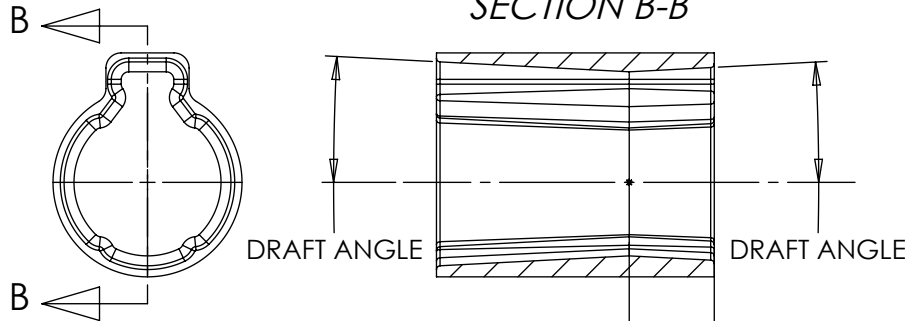
## MOUNTING RECOMMENDATION WITH DRAFT

**NOTES:**

- [1] WHEN DRAFTING BETWEEN 1° AND 2°:  
ADD 0.1 mm OF INTERFERENCE OVER THE TAB, FROM 5.8 NOM. TO 5.7 NOM., TO GUARANTEE CONTACT OVER FULL LENGTH OF THE TAB.
- [2] NEUTRAL PLANE INDICATES THE PLANE OF NOMINAL INTERFERENCE RECOMMENDED ON PREVIOUS PAGE.
- 3. LARGE DRAFT ANGLES WILL REDUCE RADIAL LOAD SUPPORT.

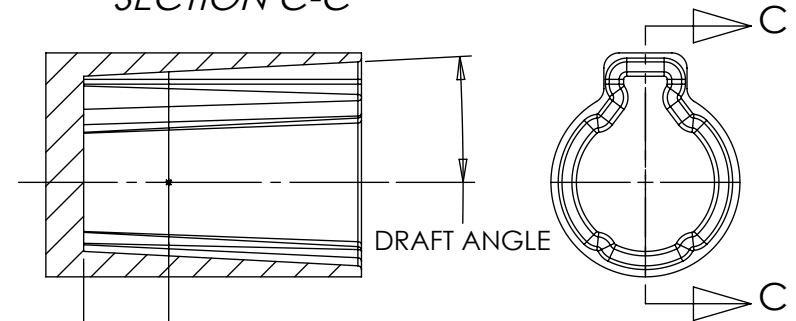
### DOUBLE PULL DRAFTS

#### SECTION B-B



### SINGLE PULL DRAFTS

#### SECTION C-C



11.25±0.1  
[.443±.004]  
NEUTRAL PLANE FROM END,  
LONG AND SHORT GEOMETRY  
SEE NOTES [1] & [2]

SPECIFICATION SUBJECT TO CHANGE

LEVEL	DESCRIPTION		DRAWN	DATE	APPROVED
DRAWN:	CRD	DATE: 03FEB17	PART NO: 84494-XXX		
CHECKED:	CRD	DATE: 21JUN17	TITLE: ReellTorq INSERT		
APPROVED:	CRD	DATE: 21JUN17	DESCRIPTION: TI-160		
REVISED:	11APR19	DIMS: mm[IN]	SCALE: 1:1		REV: B
INTERPRET PRINT PER ASME Y14.5M-1994 THIS PRINT IS THE CONFIDENTIAL PROPERTY OF REELL PRECISION MFG. THIRD ANGLE PROJECTION				REELL PRECISION MANUFACTURING 1259 WILLOW LAKE BOULEVARD SAINT PAUL, MINNESOTA 55110-5103, USA	
			DO NOT SCALE DRAWING	SHEET 5 OF 5	