

NOTES:

1. APPLICATION CONDITIONS REFERENCE (USER MUST DETERMINE FITNESS FOR USE IN APPLICATION).
ENVIRONMENT CONDITIONS: -20° TO +80°C
UP TO 10% OF LIFE CYCLES AT HOT AND COLD CONDITIONS.
2. LIFE: 25,000 CYCLES.
ONE CYCLE = 120° OPEN/120° CLOSED.
FIVE(5) CYCLES PER MINUTE MAX.
3. MATERIAL:
BRACKET AND SHAFT END ARE ENGINEERED PLASTIC
SHAFT, TORQUE ELEMENT, AND ONE WAY BEARING ARE HARDENED STEEL
4. STATIC TORQUE IS NORMALLY WITHIN 10% OF DYNAMIC TORQUE.
5. TAB MAY BE MISALIGNED DUE TO SHIPPING. MISALIGNMENT IS EASILY FIXED BY ROTATING BRACKET IN THE TORQUE FREE DIRECTION.

TI - 160 - X.XX - X - XX

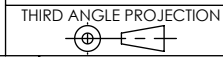
TORQUE N-m
- 4.00
- 5.00
- 6.00

DIRECTION
F - ONE WAY FORWARD
R - ONE WAY REVERSE

FINS NO.
-01

SPECIFICATION SUBJECT TO CHANGE

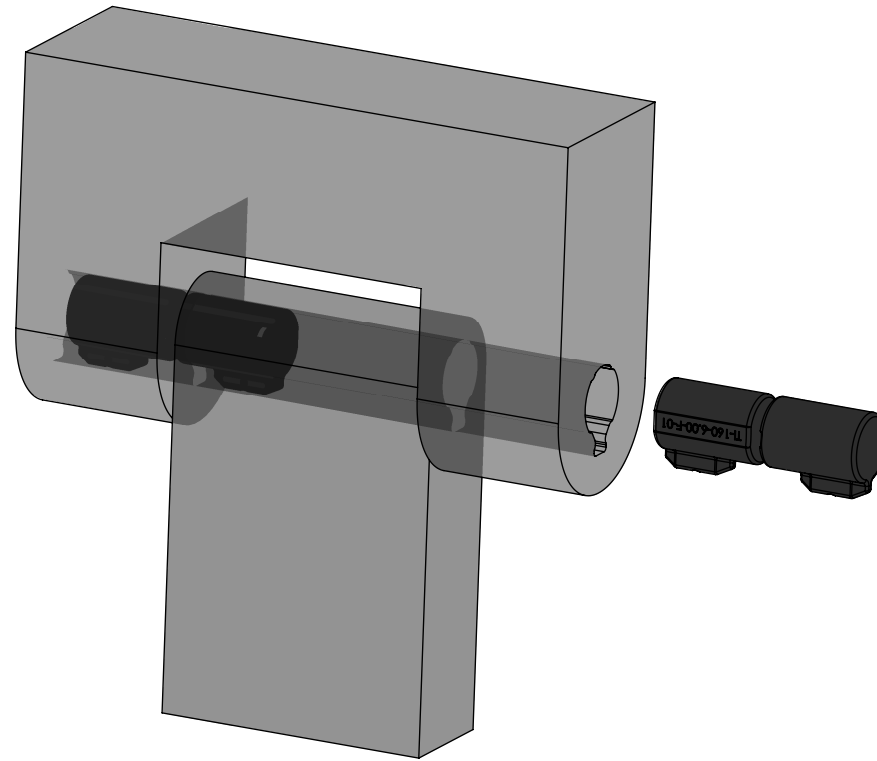
INTERPRET PRINT PER ASME Y14.5M-1994
THIS PRINT IS THE CONFIDENTIAL PROPERTY OF REELL PRECISION MFG.



LEVEL	DESCRIPTION	DRAWN	DATE	APPROVED
DRAWN: CRD	DATE: 03FEB17	PART NO: 84494-XXX		
CHECKED: CRD	DATE: 21JUN17	TITLE: ReellTorq INSERT		
APPROVED: CRD	DATE: 21JUN17	DESCRIPTION: TI-160		
REVISED: 06AUG19	DIMS: mm[IN]	REV: C		
		SCALE: 1:1	DO NOT SCALE DRAWING	SHEET 1 OF 5

REELL PRECISION MANUFACTURING
1259 WILLOW LAKE BOULEVARD
SAINT PAUL, MINNESOTA 55110-5103, USA

CATALOG NUMBER	DYNAMIC TORQUE FORWARD DIRECTION			DYNAMIC TORQUE REVERSE DIRECTION		
	NOMINAL		TOLERANCE	NOMINAL		TOLERANCE
	Nm	Lb-In	+/- %	Nm	Lb-In	+/- %
TI-160-4.00-F-01	4	35.4	30	1.8	16	MAX
TI-160-5.00-F-01	5	44.3	25	1.8	16	MAX
TI-160-6.00-F-01	6	53.1	20	1.8	16	MAX
TI-160-4.00-R-01	1.8	16	MAX	4	35.4	30
TI-160-5.00-R-01	1.8	16	MAX	5	44.3	25
TI-160-6.00-R-01	1.8	16	MAX	6	53.1	20



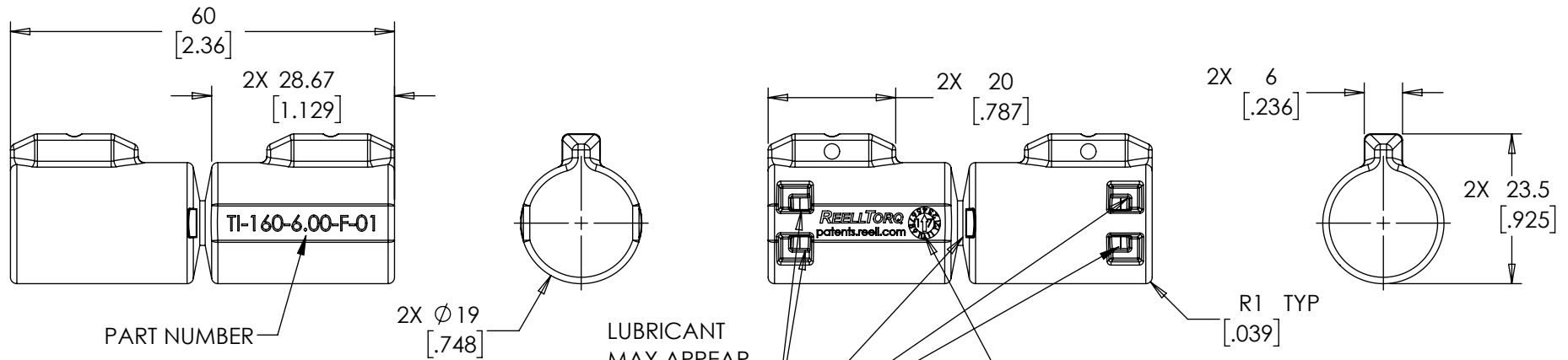
LEVEL	DESCRIPTION		DRAWN	DATE	APPROVED
DRAWN: CRD	DATE: 03FEB17	PART NO: 84494-XXX			
CHECKED: CRD	DATE: 21JUN17	TITLE: ReellTorq INSERT			
APPROVED: CRD	DATE: 21JUN17				
REVISED: 06AUG19	DIMS: mm				
INTERPRET PRINT PER ASME Y14.5M-1994 THIS PRINT IS THE CONFIDENTIAL PROPERTY OF REELL PRECISION MFG. THIRD ANGLE PROJECTION				DESCRIPTION: TI-160 REV: C	
REELL PRECISION MANUFACTURING 1259 WILLOW LAKE BOULEVARD SAINT PAUL, MINNESOTA 55110-5103, USA		SCALE: 1:1	DO NOT SCALE DRAWING	SHEET 2 OF 5	

SPECIFICATION SUBJECT TO CHANGE

TI-160-X.XX-X-01

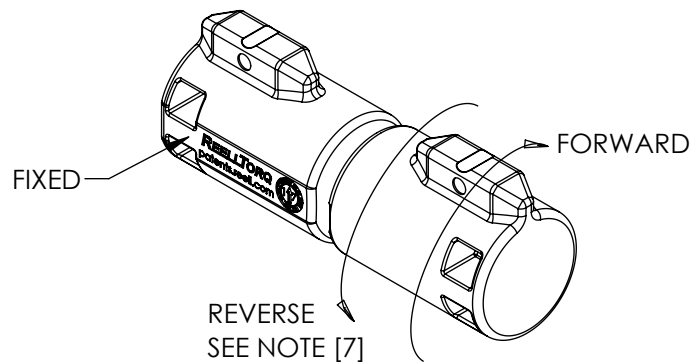
NOTES:

6. DIMENSIONAL TOLERANCES ARE BUILT INTO THE MOUNTING RECOMMENDATION SECTION. THEREFORE DIMENSIONS ON THIS PAGE ARE TO BE CONSIDERED REFERENCE.
- [7] ARROW INDICATES HIGH TORQUE DIRECTION FOR SPECIFIED CONFIGURATION.



LUBRICANT MAY APPEAR OVER LIFE IN THESE FIVE LOCATIONS

DATE STAMP (MO, YR)



SPECIFICATION SUBJECT TO CHANGE

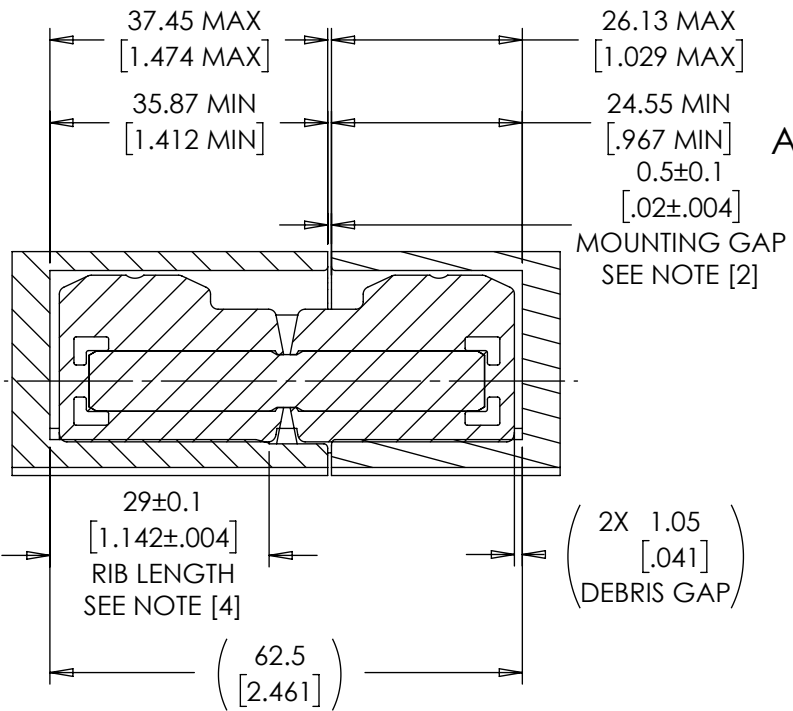
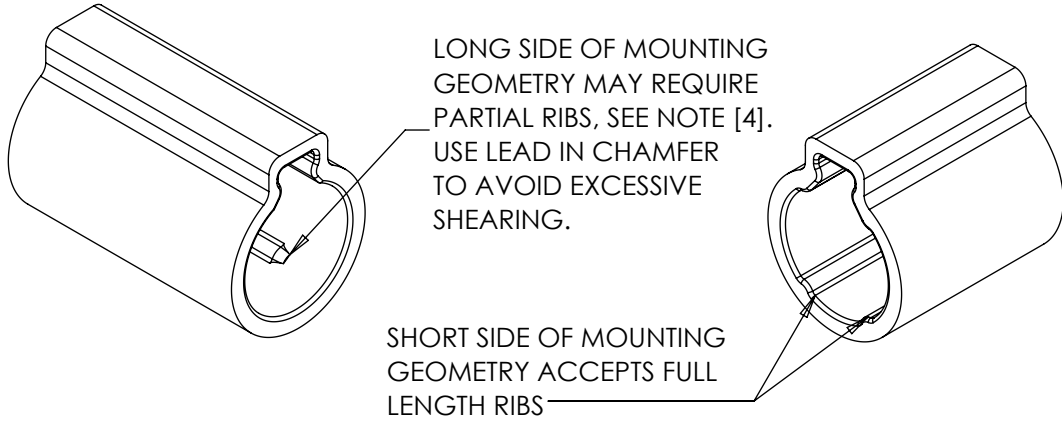
LEVEL	DESCRIPTION		DRAWN	DATE	APPROVED
DRAWN: CRD	DATE: 03FEB17	PART NO: 84494-XXX			
CHECKED: CRD	DATE: 21JUN17	TITLE: ReelTorq INSERT			
APPROVED: CRD	DATE: 21JUN17	DESCRIPTION: TI-160		REV: C	
REVISED: 06AUG19	DIMS: mm[IN]	SCALE: 1:1		DO NOT SCALE DRAWING	
<p>INTERPRET PRINT PER ASME Y14.5M-1994 THIS PRINT IS THE CONFIDENTIAL PROPERTY OF REELL PRECISION MFG.</p> <p>THIRD ANGLE PROJECTION</p>		<p>REELL PRECISION MANUFACTURING 1259 WILLOW LAKE BOULEVARD SAINT PAUL, MINNESOTA 55110-5103, USA</p>		SHEET 3 OF 5	

TI -160-X.XX-X-01

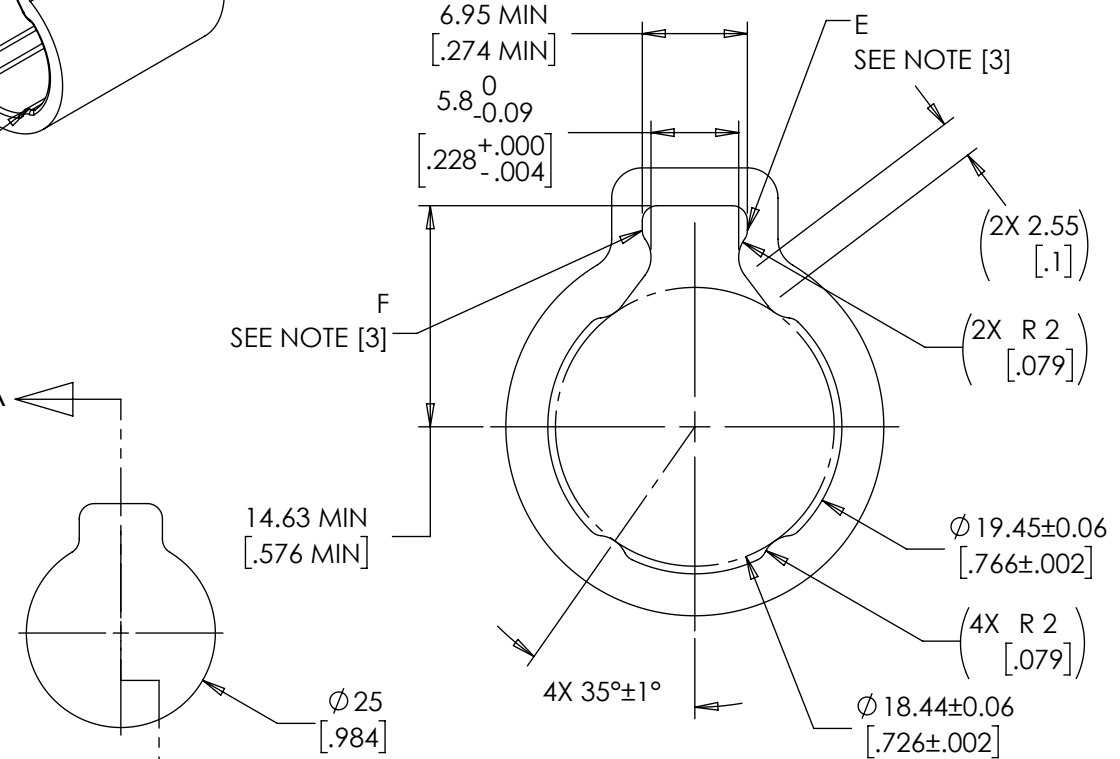
MOUNTING RECOMMENDATION

NOTES:

- [1] DOUBLE THE NEGATIVE TOLERANCE WHEN PRESSING INTO PLASTIC.
- [2] LOCATE MOUNTING GAP OVER HINGE BODY FOR ADDITIONAL SUPPORT.
- [3] GEOMETRY BETWEEN POINTS E & F CCW MAY VARY IF DESIRED (CUTTER RELIEF).
- [4] LONG SIDE OF MOUNTING GEOMETRIES REQUIRE PARTIAL RIBS FOR METAL PARTS WITH $\leq 1.0^\circ$ OF DRAFT, AND $\leq 1.8^\circ$ FOR PLASTIC PARTS.



SECTION A-A



SPECIFICATION SUBJECT TO CHANGE

INTERPRET PRINT PER ASME Y14.5M-1994
THIS PRINT IS THE CONFIDENTIAL PROPERTY OF REELL PRECISION MFG.

THIRD ANGLE PROJECTION

LEVEL	DESCRIPTION	DRAWN	DATE	APPROVED
DRAWN: CRD	DATE: 03FEB17	PART NO: 84494-XXX		
CHECKED: CRD	DATE: 21JUN17	TITLE: ReelTorq INSERT		
APPROVED: CRD	DATE: 21JUN17	DESCRIPTION: TI-160		
REVISED: 06AUG19	DIMS: mm[IN]	REV: C		
REELL PRECISION MANUFACTURING 1259 WILLOW LAKE BOULEVARD SAINT PAUL, MINNESOTA 55110-5103, USA		SCALE: 1:1	DO NOT SCALE DRAWING	SHEET 4 OF 5



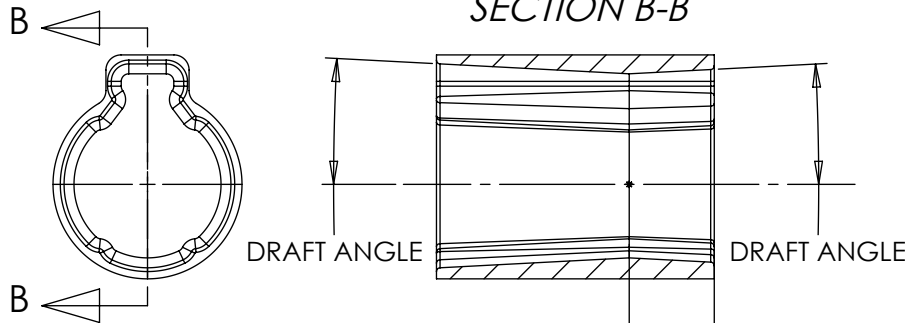
TI -160-X.XX-X-01 MOUNTING RECOMMENDATION WITH DRAFT

NOTES:

- [1] WHEN DRAFTING BETWEEN 1° AND 2°:
ADD 0.1 mm OF INTERFERENCE OVER THE
TAB, FROM 5.8 NOM. TO 5.7 NOM., TO
GUARANTEE CONTACT OVER FULL LENGTH
OF THE TAB.
- [2] NEUTRAL PLANE INDICATES THE PLANE OF
NOMINAL INTERFERENCE RECOMMENDED
ON PREVIOUS PAGE.
- 3. LARGE DRAFT ANGLES WILL REDUCE RADIAL
LOAD SUPPORT.

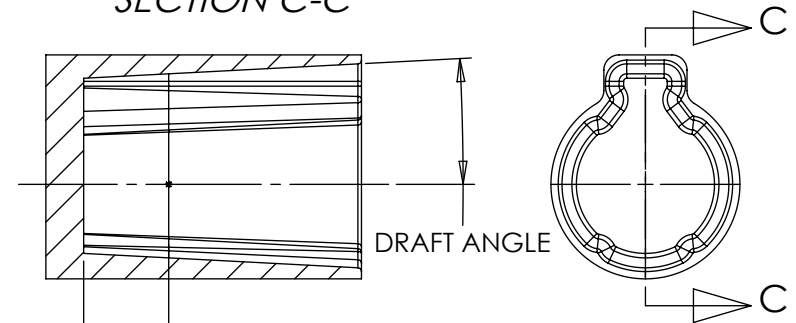
DOUBLE PULL DRAFTS

SECTION B-B



SINGLE PULL DRAFTS

SECTION C-C



11.25±0.1
[.443±.004]
NEUTRAL PLANE FROM END,
LONG AND SHORT GEOMETRY
SEE NOTES [1] & [2]

SPECIFICATION SUBJECT TO CHANGE

LEVEL	DESCRIPTION		DRAWN	DATE	APPROVED
DRAWN:	CRD	DATE: 03FEB17	PART NO: 84494-XXX		
CHECKED:	CRD	DATE: 21JUN17	TITLE: ReellTorq INSERT		
APPROVED:	CRD	DATE: 21JUN17	DESCRIPTION: TI-160		
REVISED:	06AUG19	DIMS: mm[IN]	SCALE: 1:1		REV: C
INTERPRET PRINT PER ASME Y14.5M-1994 THIS PRINT IS THE CONFIDENTIAL PROPERTY OF REELL PRECISION MFG. THIRD ANGLE PROJECTION				REELL PRECISION MANUFACTURING 1259 WILLOW LAKE BOULEVARD SAINT PAUL, MINNESOTA 55110-5103, USA	
DO NOT SCALE DRAWING			SHEET 5 OF 5		