

NOTES:

1. APPLICATION CONDITIONS REFERENCE (USER MUST DETERMINE FITNESS FOR USE IN APPLICATION).
ENVIRONMENT CONDITIONS: TBD
2. LIFE: 25,000 CYCLES.
ONE CYCLE = 120° OPEN/120° CLOSED.
FIVE(5) CYCLES PER MINUTE MAX.
3. MATERIAL:
BRACKET AND SHAFT END ARE ENGINEERED PLASTIC
SHAFT AND TORQUE ELEMENT ARE HARDENED STEEL
4. TABS ON HINGE TO BE ALIGNED AS SHOWN ±5°.
5. STATIC TORQUE IS NORMALLY WITHIN 10% OF DYNAMIC TORQUE.
- [6] MEASURE OFF GATE VESTIGE.

TI - XXX - X.XX - XX

TYPE
- 120
- 140

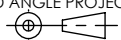

TORQUE N-m

FINS NO.
- 01
- 02

- 120
- 0.25
- 0.35
- 0.50
- 0.65
- 0.80
- 1.00
- 1.20

- 140
- 1.40
- 1.80
- 2.20
- 2.60
- 3.00
- 3.40
- 3.80
- 4.20

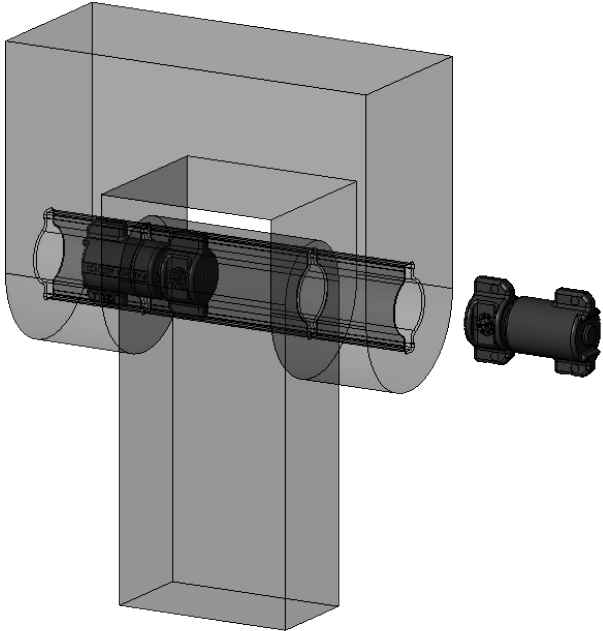
SPECIFICATIONS SUBJECT TO CHANGE

LEVEL	DESCRIPTION		DRAWN	DATE	APPROVED
DRAWN:	HMA	DATE: 17JAN13	PART NO.: 20-XXX & 40-XXX		
CHECKED:	STK	DATE: 01MAR13	TITLE: ReellTorq INSERT		
APPROVED:	STK	DATE: 01MAR13	DESCRIPTION: TI-1XX		
REVISED:	28FEB17	DIMS: mm[IN]	SCALE: 1:1		REV: J
				DO NOT SCALE DRAWING	
REELL PRECISION MANUFACTURING 1259 WILLOW LAKE BOULEVARD SAINT PAUL, MINNESOTA 55110-5103, USA		SHEET 1 OF 8			

INTERPRET PRINT PER ASME Y14.5M-1994
THIS PRINT IS THE CONFIDENTIAL PROPERTY OF REELL PRECISION MFG.

THIRD ANGLE PROJECTION

CATALOG NUMBER	PART NUMBER	DYNAMIC TORQUE		
		NOMINAL		TOLERANCE
		Nm	Lb-In	+/- %
TI-120-0.25-01	20-402	0.25	2.20	45
TI-120-0.35-01	20-403	0.35	3.10	35
TI-120-0.50-01	20-404	0.50	4.40	25
TI-120-0.65-01	20-406	0.65	5.80	20
TI-120-0.80-01	20-408	0.80	7.10	20
TI-120-1.00-01	20-410	1.00	8.90	20
TI-120-1.20-01	20-412	1.20	10.60	20
TI-120-0.25-02	20-002	0.25	2.20	45
TI-120-0.35-02	20-003	0.35	3.10	35
TI-120-0.50-02	20-004	0.50	4.40	25
TI-120-0.65-02	20-006	0.65	5.80	20
TI-120-0.80-02	20-008	0.80	7.10	20
TI-120-1.00-02	20-010	1.00	8.90	20
TI-120-1.20-02	20-012	1.20	10.60	20
TI-140-1.40-01	40-514	1.40	12.40	30
TI-140-1.80-01	40-518	1.80	15.90	25
TI-140-2.20-01	40-522	2.20	19.50	20
TI-140-2.60-01	40-526	2.60	23.00	20
TI-140-3.00-01	40-530	3.00	26.60	20
TI-140-3.40-01	40-534	3.40	30.10	20
TI-140-3.80-01	40-538	3.80	33.60	20
TI-140-4.20-01	40-542	4.20	37.20	20
TI-140-1.40-02	40-014	1.40	12.40	30
TI-140-1.80-02	40-018	1.80	15.90	25
TI-140-2.20-02	40-022	2.20	19.50	20
TI-140-2.60-02	40-026	2.60	23.00	20
TI-140-3.00-02	40-030	3.00	26.60	20
TI-140-3.40-02	40-034	3.40	30.10	20
TI-140-3.80-02	40-038	3.80	33.60	20
TI-140-4.20-02	40-042	4.20	37.20	20



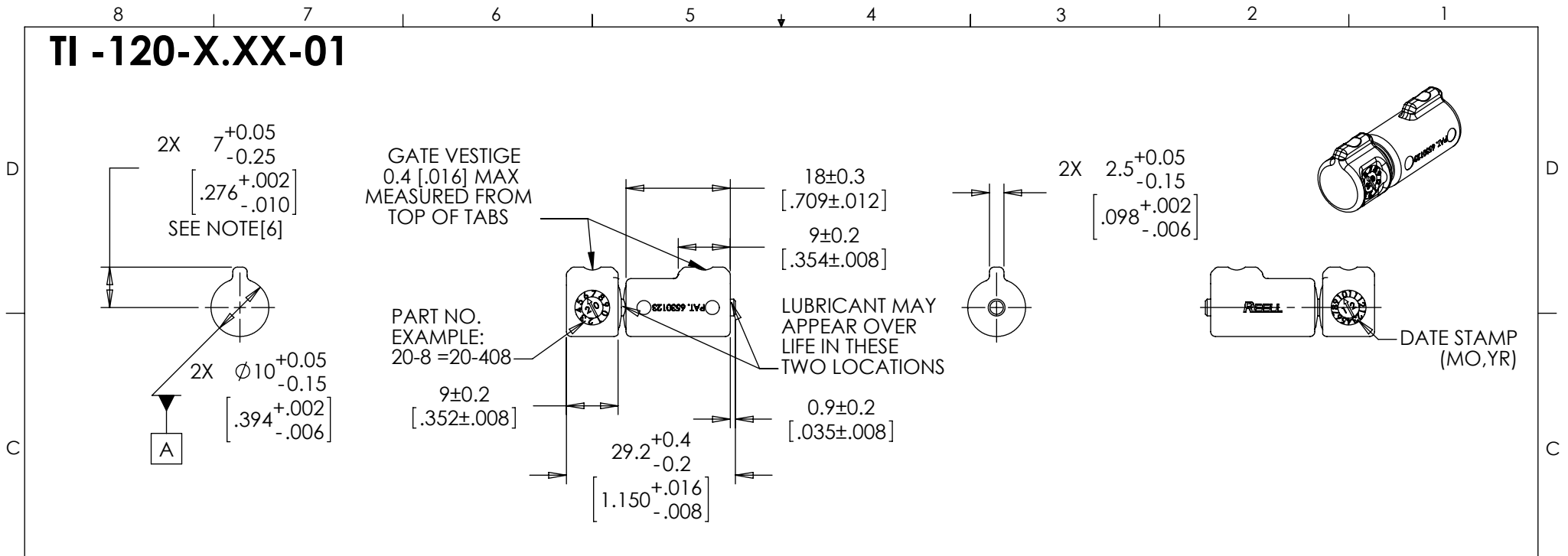
LEVEL	DESCRIPTION		DRAWN	DATE	APPROVED
DRAWN: HMA	DATE: 17JAN13	PART NO.:	20-XXX & 40-XXX		
CHECKED: STK	DATE: 01MAR13	TITLE:	ReellTorq INSERT		
APPROVED: STK	DATE: 01MAR13	REVISION:	28FEB17	DIMS: mm[IN]	REV: J
DESCRIPTION:		TI-1XX		SCALE: 1:2	
DO NOT SCALE DRAWING		SHEET 2 OF 8			

INTERPRET PRINT PER
ASME Y14.5M-1994
THIS PRINT IS THE
CONFIDENTIAL PROPERTY
OF REELL PRECISION MFG.
THIRD ANGLE PROJECTION

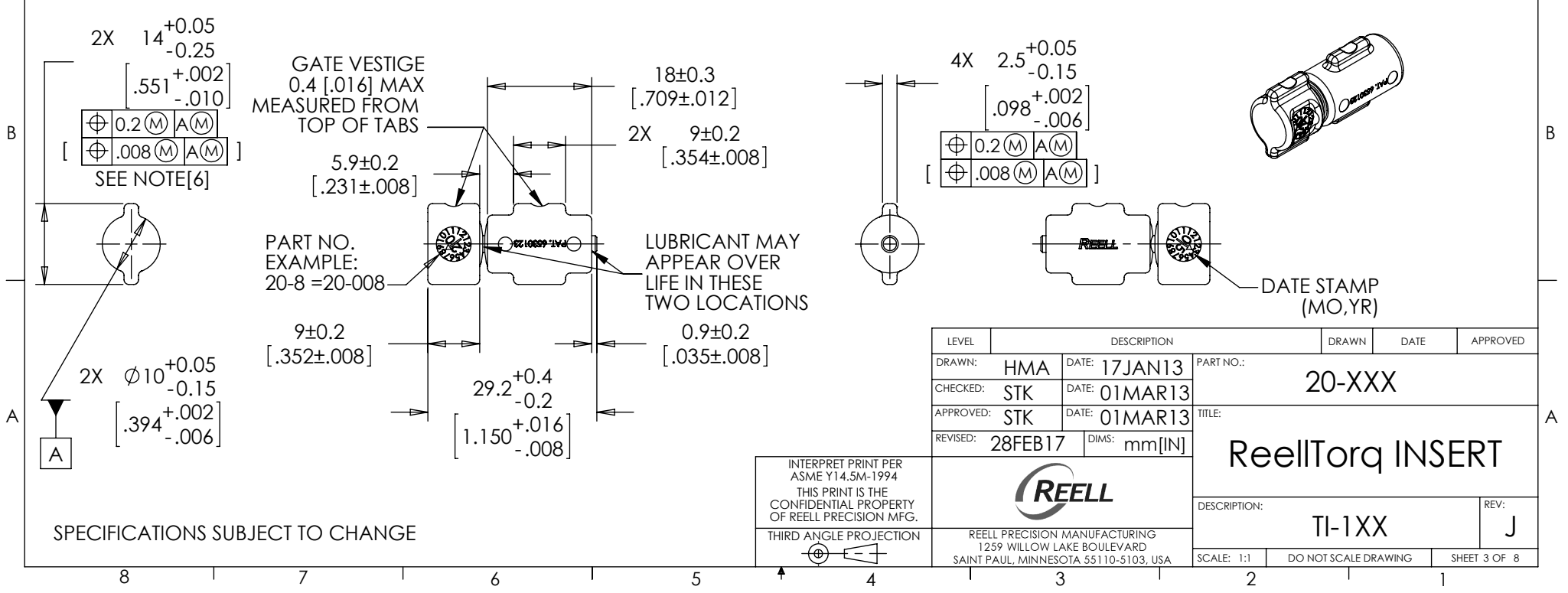
REELL
REELL PRECISION MANUFACTURING
1259 WILLOW LAKE BOULEVARD
SAINT PAUL, MINNESOTA 55110-5103, USA

SPECIFICATIONS SUBJECT TO CHANGE

TI -120-X.XX-01



TI -120-X.XX-02

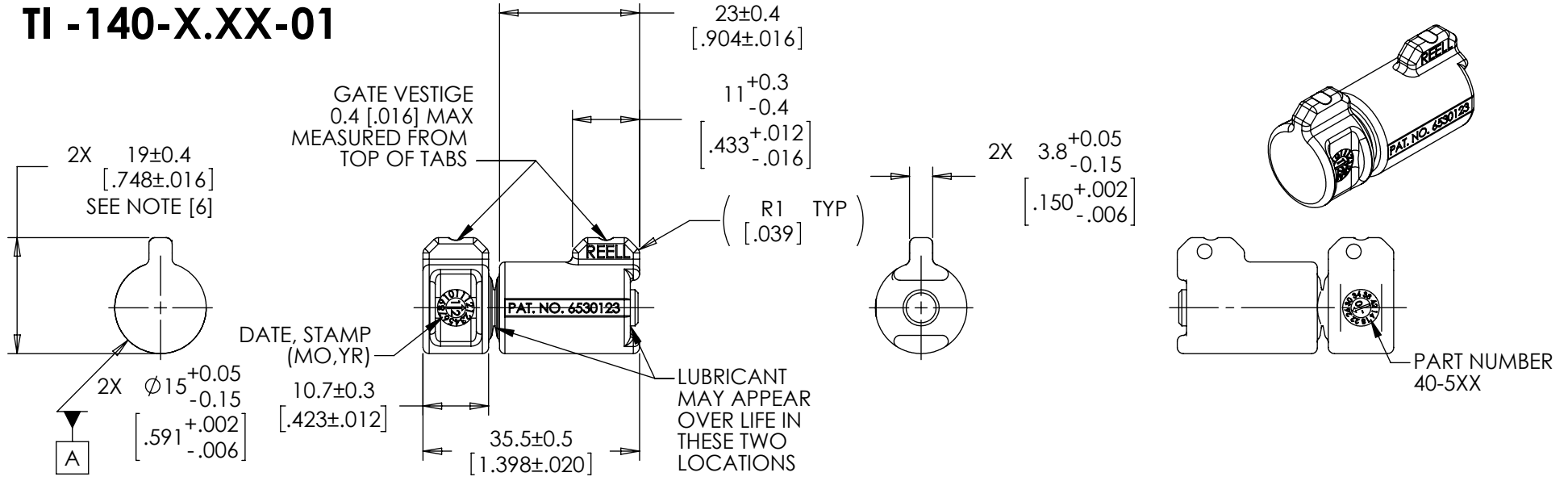


SPECIFICATIONS SUBJECT TO CHANGE

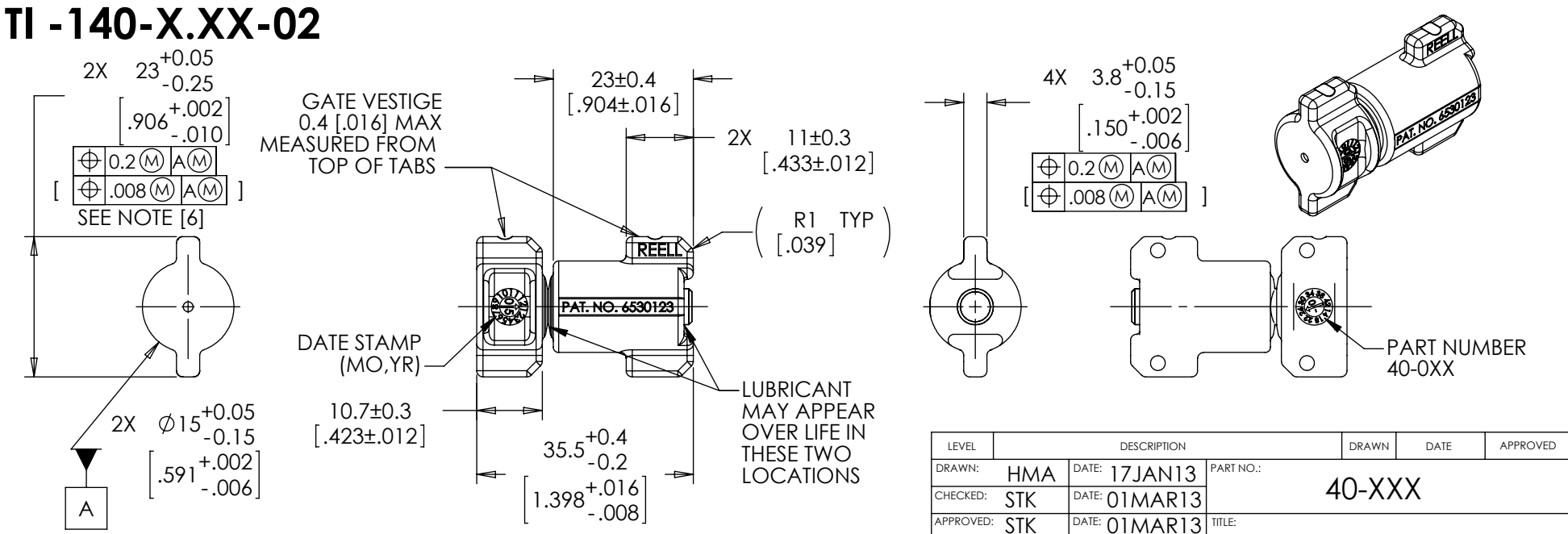
INTERPRET PRINT PER ASME Y14.5M-1994
THIS PRINT IS THE CONFIDENTIAL PROPERTY OF REELL PRECISION MFG.
THIRD ANGLE PROJECTION

LEVEL	DESCRIPTION	DRAWN	DATE	APPROVED
DRAWN: HMA	DATE: 17JAN13	PART NO.: 20-XXX		
CHECKED: STK	DATE: 01MAR13	TITLE: ReellTorq INSERT		
APPROVED: STK	DATE: 01MAR13	REV: J		
REVISED: 28FEB17	DIMS: mm[IN]	DESCRIPTION: TI-1XX		
REELL PRECISION MANUFACTURING 1259 WILLOW LAKE BOULEVARD SAINT PAUL, MINNESOTA 55110-5103, USA		SCALE: 1:1	DO NOT SCALE DRAWING	SHEET 3 OF 8

TI -140-X.XX-01



TI -140-X.XX-02



SPECIFICATIONS SUBJECT TO CHANGE

INTERPRET PRINT PER
ASME Y14.5M-1994
THIS PRINT IS THE
CONFIDENTIAL PROPERTY
OF REELL PRECISION MFG.

THIRD ANGLE PROJECTION

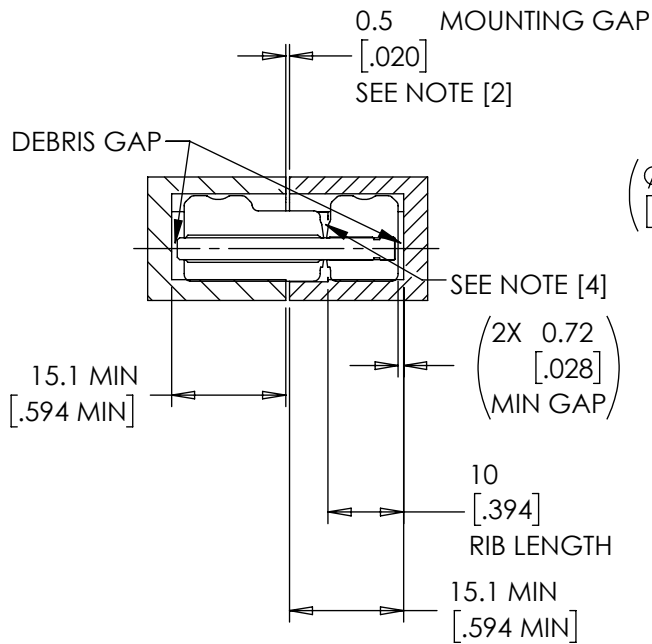
LEVEL	DESCRIPTION	DRAWN	DATE	APPROVED
DRAWN:	HMA	DATE:	17JAN13	PART NO.: 40-XXX
CHECKED:	STK	DATE:	01MAR13	
APPROVED:	STK	DATE:	01MAR13	
REVISED:	28FEB17	DIMS:	mm[IN]	
 REELL PRECISION MANUFACTURING 1259 WILLOW LAKE BOULEVARD SAINT PAUL, MINNESOTA 55110-5103, USA		TITLE:		REV: J
		DESCRIPTION: ReellTorq INSERT		
SCALE: 1:1		DO NOT SCALE DRAWING		SHEET 4 OF 8

TI -120-X.XX-01 MOUNTING RECOMMENDATION

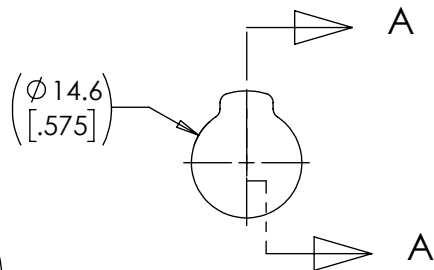


LONG SIDE OF INSERT
ACCEPTS FULL
LENGTH RIBS

SHORT SIDE OF INSERT
REQUIRES PARTIAL
RIB LENGTH



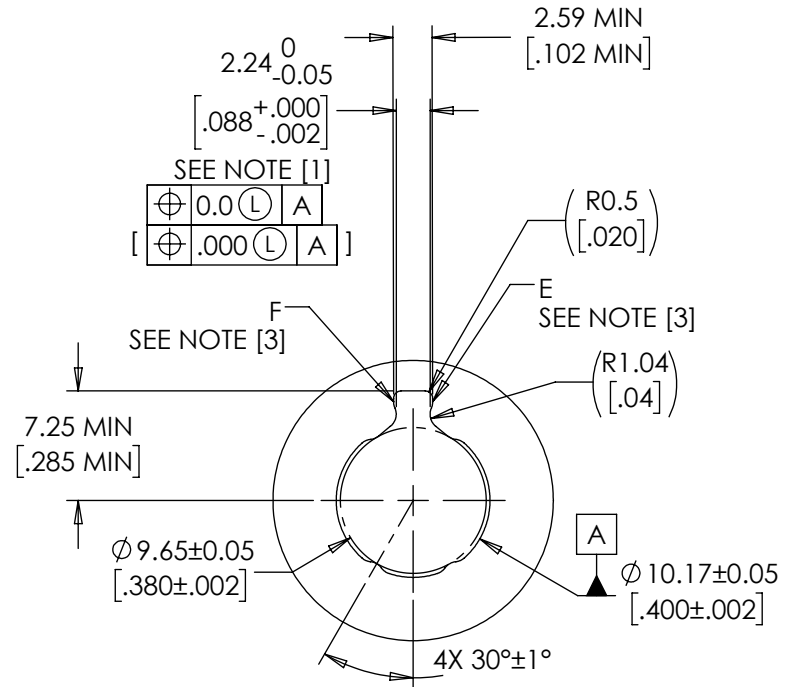
SECTION A-A



NOTES:

- [1] DOUBLE THE NEGATIVE TOLERANCE WHEN PRESSING INTO PLASTIC.
- [2] LOCATE MOUNTING GAP OVER HINGE BODY FOR ADDITIONAL SUPPORT.
- [3] GEOMETRY BETWEEN POINTS E & F CCW MAY VARY IF DESIRED (CUTTER RELIEF).
- [4] INSERT GAP MAY CHANGE DURING INSTALLATION.

PRESS FIT PROFILE



SCALE 2:1

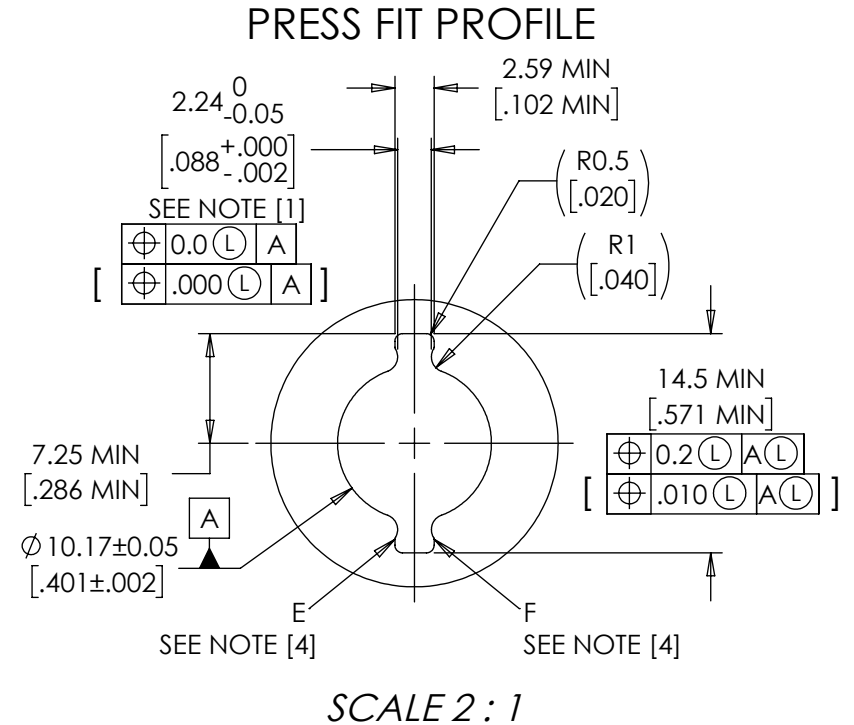
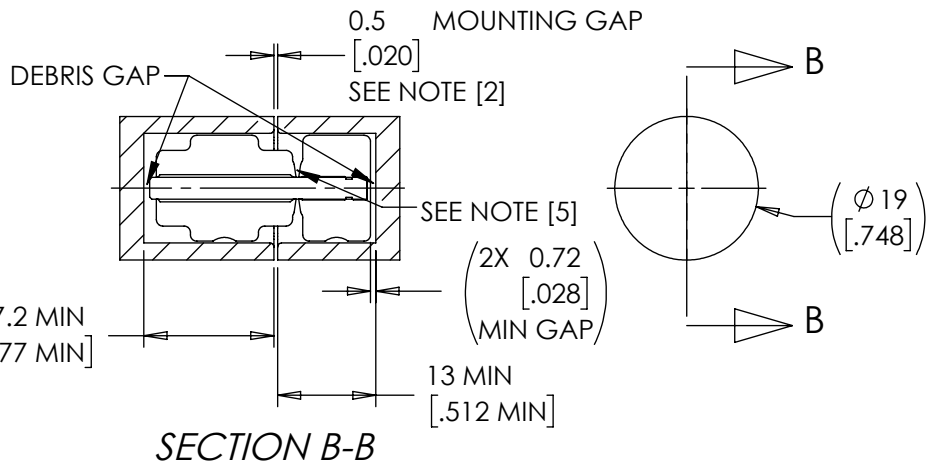
LEVEL	DESCRIPTION		DRAWN	DATE	APPROVED
DRAWN:	HMA	DATE: 17JAN13	PART NO.: 20-XXX		
CHECKED:	STK	DATE: 01MAR13	TITLE: ReellTorq INSERT		
APPROVED:	STK	DATE: 01MAR13	DESCRIPTION: TI-1XX		
REVISED:	28FEB17	DIMS: mm[IN]	REV: J		
INTERPRET PRINT PER ASME Y14.5M-1994 THIS PRINT IS THE CONFIDENTIAL PROPERTY OF REELL PRECISION MFG. THIRD ANGLE PROJECTION				REELL PRECISION MANUFACTURING 1259 WILLOW LAKE BOULEVARD SAINT PAUL, MINNESOTA 55110-5103, USA	
SCALE: 1:1		DO NOT SCALE DRAWING		SHEET 5 OF 8	

SPECIFICATIONS SUBJECT TO CHANGE

TI -120-X.XX-02 MOUNTING RECOMMENDATION

NOTES:

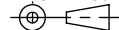
- [1] DOUBLE THE NEGATIVE TOLERANCE WHEN PRESSING INTO PLASTIC.
- [2] LOCATE MOUNTING GAP OVER HINGE BODY FOR ADDITIONAL SUPPORT.
3. TWO FIN TORQUE INSERTS CAN BE INSERTED EITHER ORIENTATION.
- [4] GEOMETRY BETWEEN POINTS E & F CCW MAY VARY IF DESIRED (CUTTER RELIEF).
- [5] INSERT GAP MAY CHANGE DURING INSTALLATION.



SPECIFICATIONS SUBJECT TO CHANGE

INTERPRET PRINT PER
ASME Y14.5M-1994
THIS PRINT IS THE
CONFIDENTIAL PROPERTY
OF REELL PRECISION MFG.

THIRD ANGLE PROJECTION



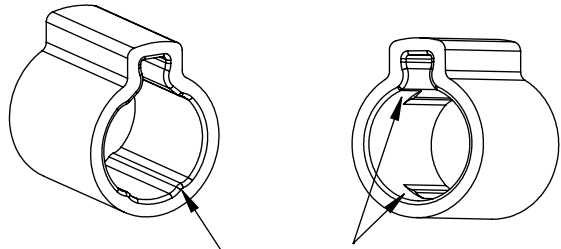
LEVEL	DESCRIPTION		DRAWN	DATE	APPROVED
DRAWN:	HMA	DATE: 17JAN13	PART NO.: 20-XXX		
CHECKED:	STK	DATE: 01MAR13	TITLE: ReellTorq INSERT		
APPROVED:	STK	DATE: 01MAR13	DESCRIPTION: TI-1XX		
REVISED:	28FEB17	DIMS: mm[IN]	REV: J		
		REELL PRECISION MANUFACTURING 1259 WILLOW LAKE BOULEVARD SAINT PAUL, MINNESOTA 55110-5103, USA		SCALE: 1:1	DO NOT SCALE DRAWING
					SHEET 6 OF 8

TI -140-X.XX-01

MOUNTING RECOMMENDATION

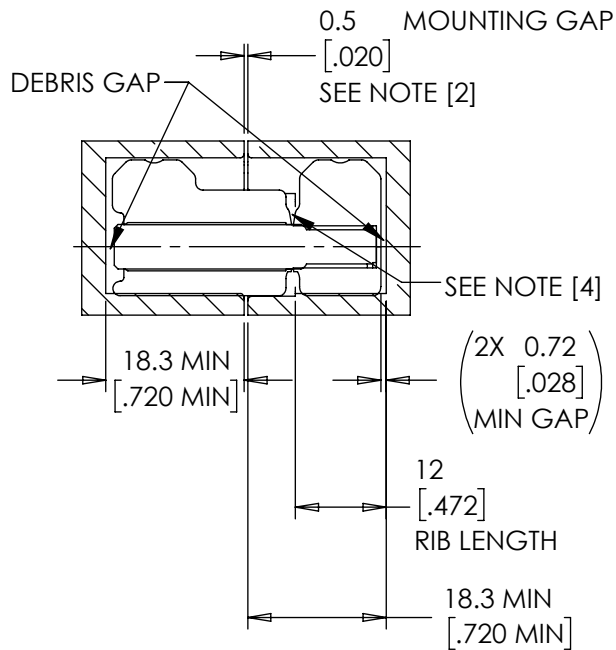
NOTES:

- [1] DOUBLE THE NEGATIVE TOLERANCE WHEN PRESSING INTO PLASTIC.
- [2] LOCATE MOUNTING GAP OVER HINGE BODY FOR ADDITIONAL SUPPORT.
- [3] GEOMETRY BETWEEN POINTS E & F CCW MAY VARY IF DESIRED (CUTTER RELIEF).
- [4] INSERT GAP MAY CHANGE DURING INSTALLATION.



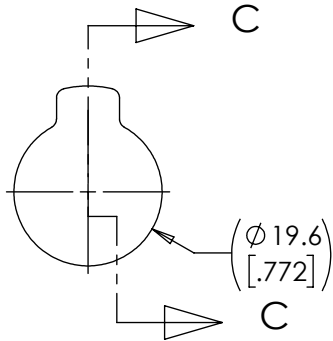
LONG SIDE OF INSERT
ACCEPTS FULL
LENGTH RIBS

SHORT SIDE OF INSERT
REQUIRES PARTIAL
RIB LENGTH

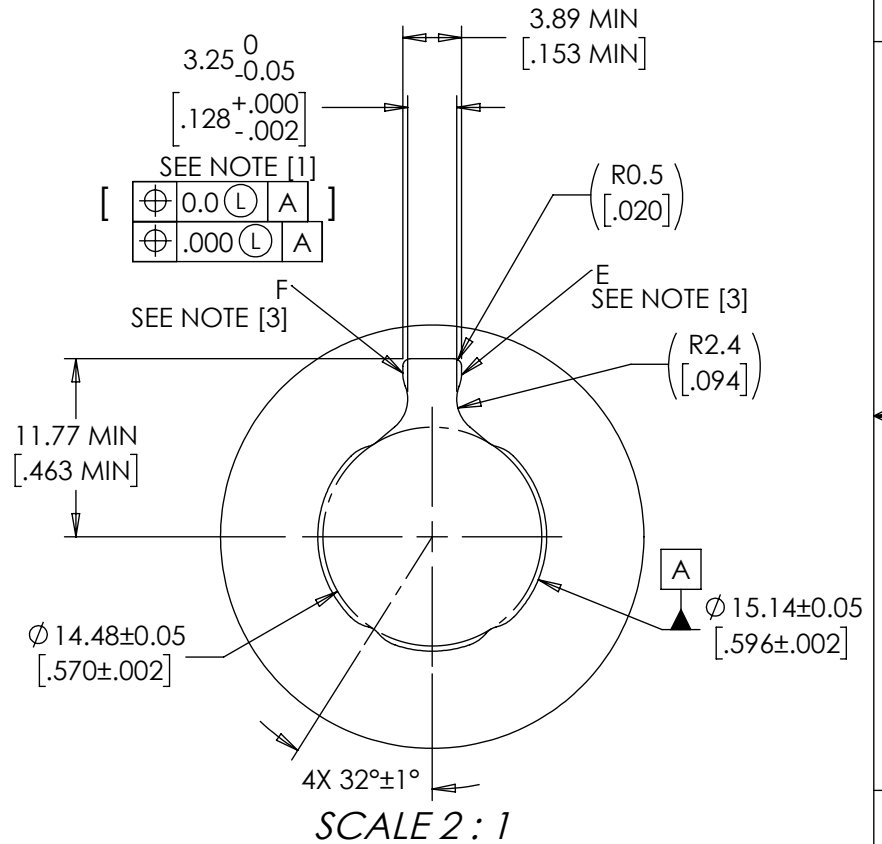


SECTION C-C

SPECIFICATIONS SUBJECT TO CHANGE



PRESS FIT PROFILE



LEVEL	DESCRIPTION	DRAWN	DATE	APPROVED
DRAWN: HMA	DATE: 17JAN13	PART NO.: 40-XXX		
CHECKED: STK	DATE: 01MAR13	TITLE: ReellTorq INSERT		
APPROVED: STK	DATE: 01MAR13	DESCRIPTION: TI-1XX		
REVISED: 28FEB17	DIMS: mm[IN]	REV: J		
REELL PRECISION MANUFACTURING 1259 WILLOW LAKE BOULEVARD SAINT PAUL, MINNESOTA 55110-5103, USA		SCALE: 1:1	DO NOT SCALE DRAWING	SHEET 7 OF 8

INTERPRET PRINT PER
ASME Y14.5M-1994
THIS PRINT IS THE
CONFIDENTIAL PROPERTY
OF REELL PRECISION MFG.

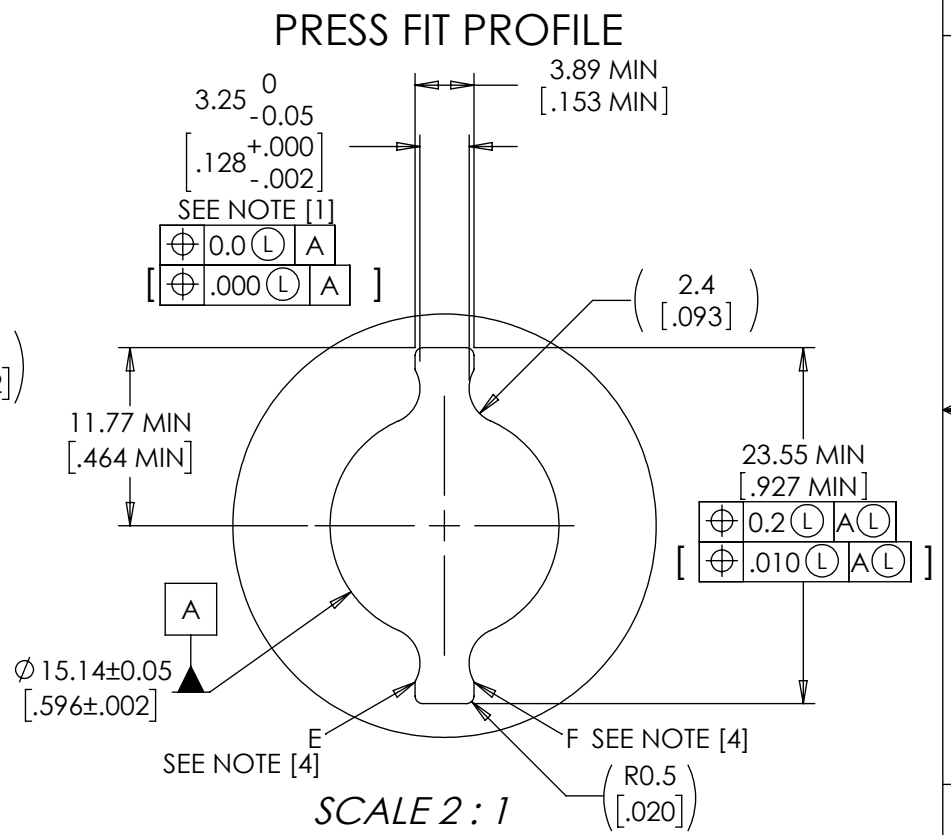
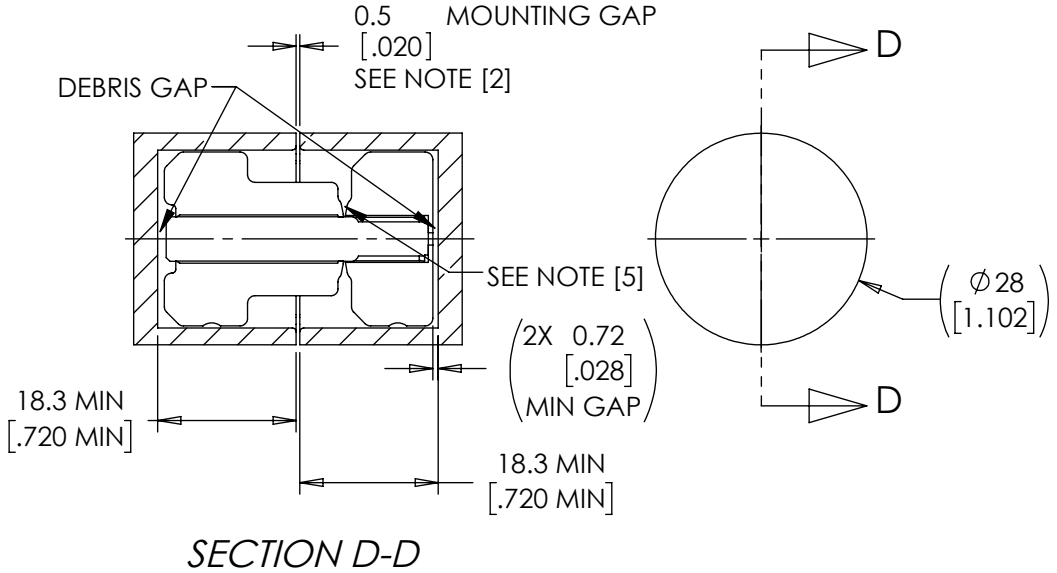
THIRD ANGLE PROJECTION



TI -140-X.XX-02

MOUNTING RECOMMENDATION

- NOTES:
- [1] DOUBLE THE NEGATIVE TOLERANCE WHEN PRESSING INTO PLASTIC.
 - [2] LOCATE MOUNTING GAP OVER HINGE BODY FOR ADDITIONAL SUPPORT.
 3. TWO FIN TORQUE INSERTS CAN BE INSERTED EITHER ORIENTATION.
 - [4] GEOMETRY BETWEEN POINTS E & F CCW MAY VARY IF DESIRED (CUTTER RELIEF).
 - [5] INSERT GAP MAY CHANGE DURING INSTALLATION.



LEVEL	DESCRIPTION	DRAWN	DATE	APPROVED
DRAWN:	HMA	DATE:	17JAN13	PART NO.: 40-XXX
CHECKED:	STK	DATE:	01MAR13	
APPROVED:	STK	DATE:	01MAR13	
REVISED:	28FEB17	DIMS:	mm[IN]	
		TITLE: ReellTorq INSERT		REV:
				J
DESCRIPTION: TI-1XX		SCALE:	1:1	DO NOT SCALE DRAWING
SHEET 8 OF 8				

INTERPRET PRINT PER ASME Y14.5M-1994
 THIS PRINT IS THE CONFIDENTIAL PROPERTY OF REELL PRECISION MFG.
 THIRD ANGLE PROJECTION

SPECIFICATIONS SUBJECT TO CHANGE